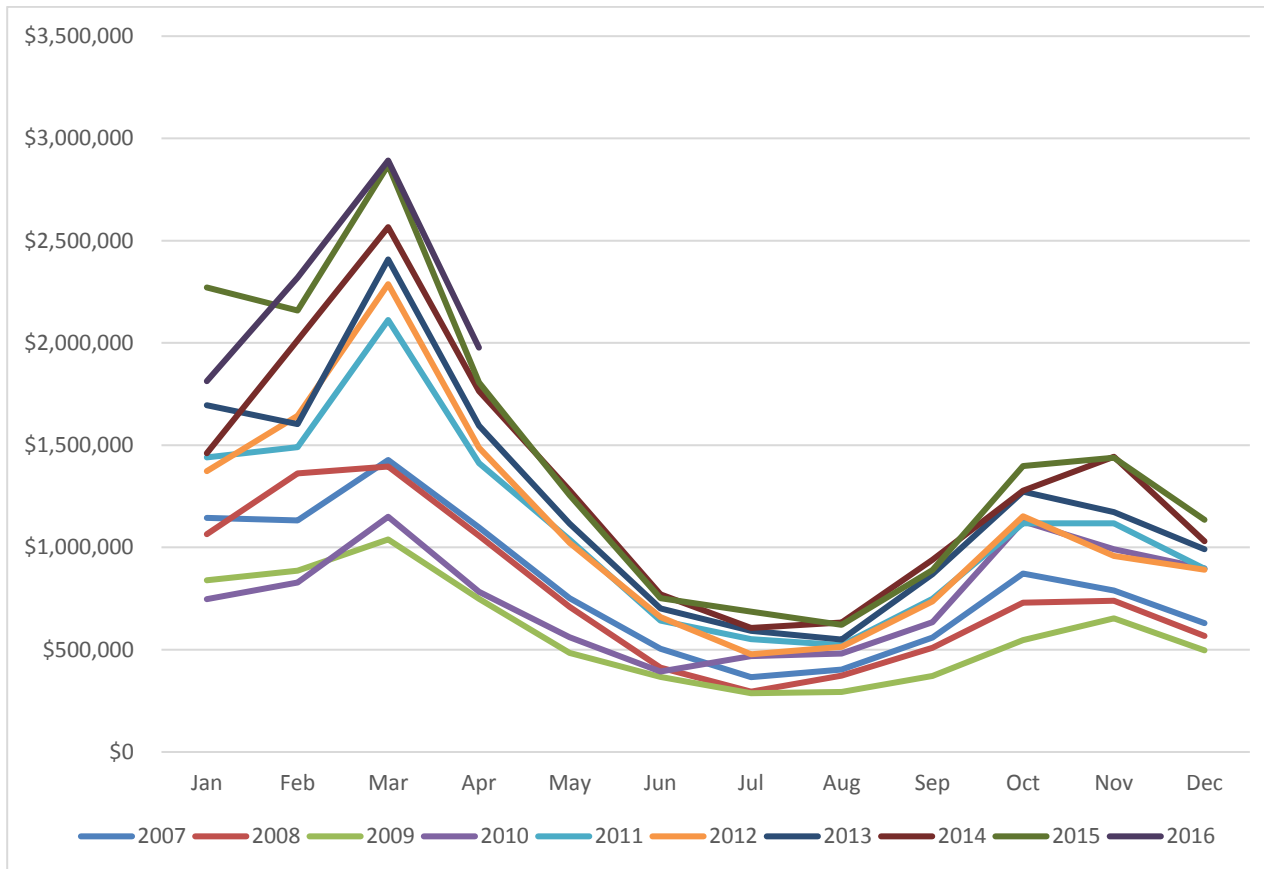


Scottsdale Bed Tax Collections 2007-2016 (to date)



Scottsdale Bed Tax Collections

| | 2007 | 2008 | 2009 | 2010 | 2011 | 2012 | 2013 | 2014 | 2015 | 2016 |
|---------------------|-------------|-------------|-------------|-------------|--------------|--------------|--------------|--------------|--------------|-------------|
| Jan | \$1,145,222 | \$1,065,634 | \$838,870 | \$746,527 | \$1,439,693 | \$1,373,586 | \$1,695,722 | \$1,461,090 | \$2,271,788 | \$1,813,107 |
| Feb | \$1,132,446 | \$1,361,716 | \$886,188 | \$828,485 | \$1,490,790 | \$1,643,740 | \$1,602,606 | \$2,013,208 | \$2,158,027 | \$2,320,417 |
| Mar | \$1,427,745 | \$1,395,675 | \$1,039,177 | \$1,150,123 | \$2,112,133 | \$2,287,454 | \$2,408,496 | \$2,566,323 | \$2,869,673 | \$2,892,090 |
| Apr | \$1,098,091 | \$1,057,041 | \$748,393 | \$783,160 | \$1,412,304 | \$1,486,879 | \$1,595,317 | \$1,764,997 | \$1,806,673 | \$1,977,341 |
| May | \$751,622 | \$710,413 | \$484,786 | \$560,558 | \$1,038,318 | \$1,022,196 | \$1,117,220 | \$1,278,507 | \$1,256,091 | |
| Jun | \$504,334 | \$412,163 | \$366,474 | \$393,529 | \$642,135 | \$660,005 | \$702,513 | \$770,464 | \$751,742 | |
| Jul | \$365,852 | \$294,899 | \$287,445 | \$468,069 | \$551,811 | \$477,816 | \$592,219 | \$606,581 | \$686,517 | |
| Aug | \$403,225 | \$373,040 | \$293,820 | \$481,170 | \$522,553 | \$513,365 | \$549,687 | \$633,261 | \$621,760 | |
| Sep | \$558,736 | \$508,832 | \$371,649 | \$634,850 | \$749,610 | \$736,410 | \$869,451 | \$939,775 | \$889,778 | |
| Oct | \$871,790 | \$730,114 | \$547,610 | \$1,126,767 | \$1,118,386 | \$1,152,324 | \$1,272,297 | \$1,278,397 | \$1,398,632 | |
| Nov | \$789,492 | \$739,333 | \$653,810 | \$990,792 | \$1,118,739 | \$958,248 | \$1,173,582 | \$1,443,948 | \$1,439,290 | |
| Dec | \$629,853 | \$567,325 | \$496,390 | \$897,368 | \$895,391 | \$891,379 | \$991,024 | \$1,031,086 | \$1,135,306 | |
| Annual Total | \$9,678,408 | \$9,216,185 | \$7,014,612 | \$9,061,398 | \$13,091,863 | \$13,203,402 | \$14,570,134 | \$15,787,637 | \$17,285,277 | \$9,002,955 |

Source: City of Scottsdale Economic Development Department