



Port Everglades 2009 Master / Vision Plan Update

Public Meeting

August 31, 2010

Port Everglades Mission Statement

The mission of Port Everglades is to manage the County's port-related assets to maximize the economic benefits to the citizens and businesses of Broward County and the State of Florida. The Port will manage the County's assets in a financially responsible, environmentally sound manner, consistent with the local, state, and federal rules and regulations which govern international and domestic trade, transportation and the Port industry.

Today's Presentation

- Project Background
- Industry Perspective and Dynamics
- Market Assessment and Infrastructure Needs Overview
- Status of 2006 Master Plan Projects
- Status of Turning Notch Expansion and Upland Enhancement Project
- Updated Plans
 - 5 year Master Plan and 10 and 20 year Vision Plans
 - Summary of Estimated Total Cost

Project Background

- 2006 Master/Vision Plan was approved by the Board of County Commissioners in December 2007
- BOCC directed that Port Master Plan be updated every two years
- Notice to Proceed for the 2009 Master/Vision Plan Update issued in February 2009

Master Plan Elements

- Phase I – Completed in October 2009
 - Facilities Assessment
 - Market Assessment
 - Facilities Needs and Throughput Enhancement
 - Strategy Development, Tasks A-C
- Phase II – Scheduled to be completed by December 2010
 - Strategy Development, Tasks D-E
 - Final Plan (Executive Summary)
 - Implementation Plan
- Phase III – Scheduled to be completed by December 2011
 - Update Deepwater Component of County's Comprehensive Plan

Ports are Economic Engines!

- Public ports throughout the United States are responsible for generating 13.3 million jobs.

(Source: Martin Associates for American Association of Port Authorities)

- “Deepdraft” ports, move 99.4 percent of U.S. overseas trade by volume.

(Source: U.S. Census Bureau)

- Total freight volume moving through U.S. ports is projected to increase by more than 50 percent by 2020, compared with 2001, with international container traffic volume more than doubling.

(Source: U.S. Department of Transportation)



Port Everglades Impacts - Local and Regional

Total Jobs 143,185

- Direct (local) 9,948
- Induced (local/regional) 9,225
- Indirect (local/regional) 6,703
- Related User (statewide) 117,310

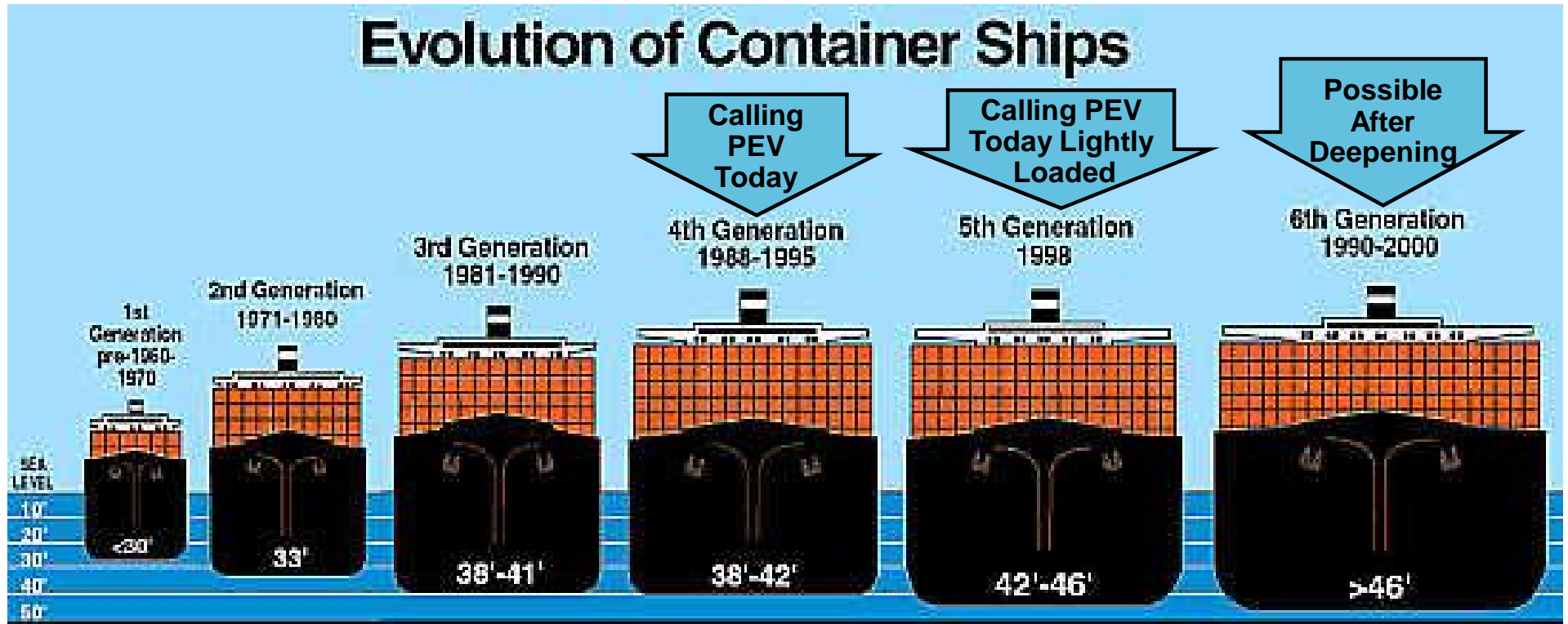
Personal Income \$5.4 billion

- Direct (local) \$ 379 million
- Induced(local/regional) \$ 1,000 million
- Indirect (local/regional) \$ 272 million
- Related User (statewide) \$ 3,700 million

Total Value of Economic Activities \$14 billion

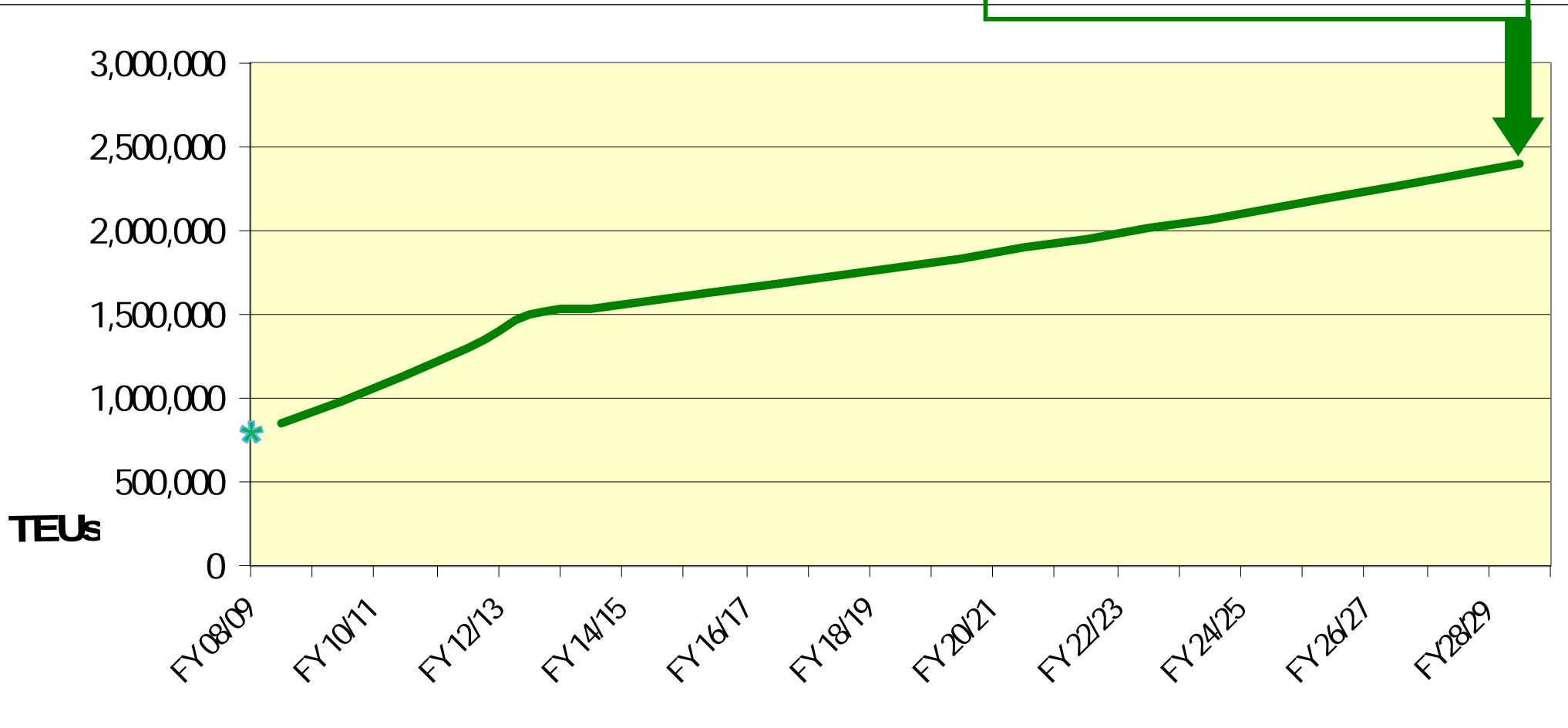
State and Local Taxes: \$400 million

Bigger Ships need Longer Berths and Deeper Water



Containerized Cargo

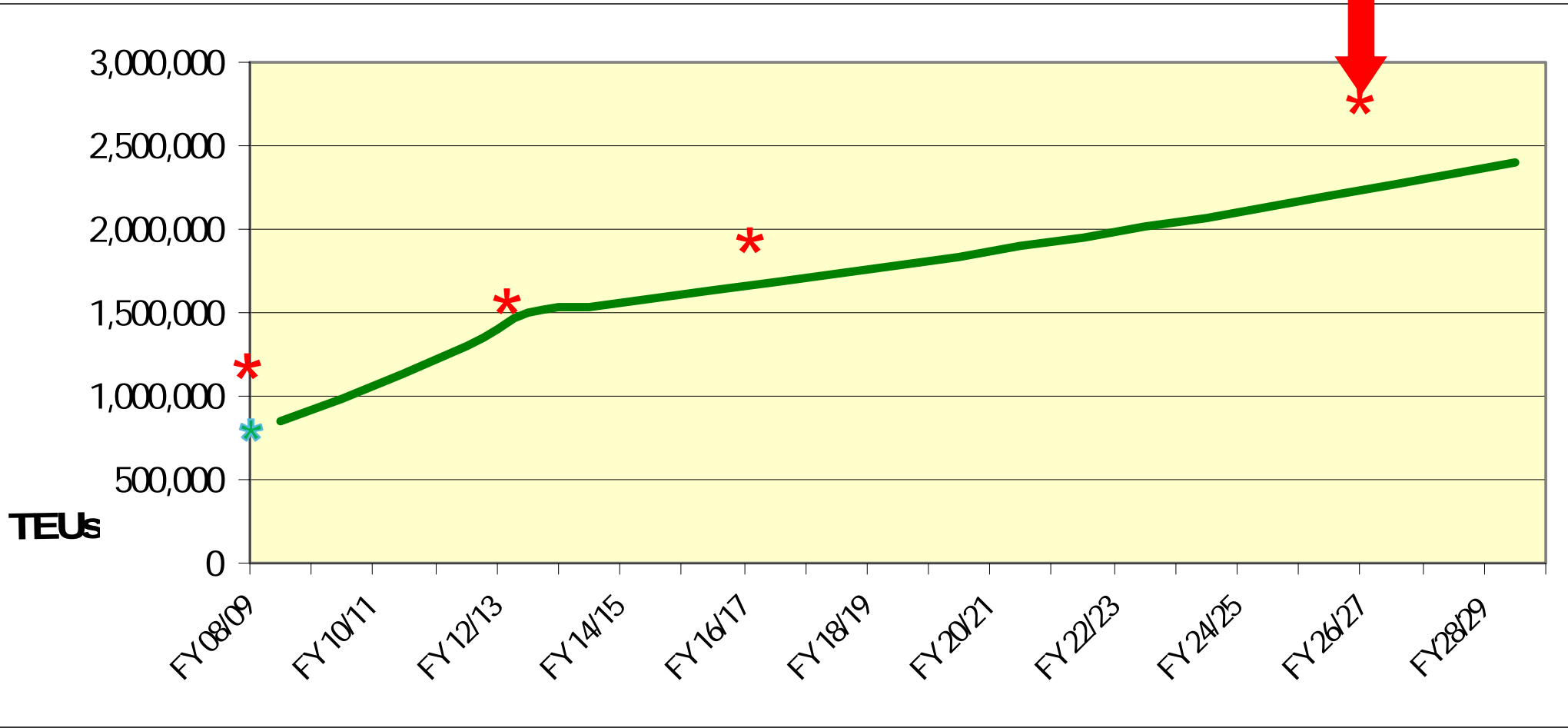
**FY 28/29:
2.4 million TEUs**



* FY 08/09 Actual Throughput

Containerized Cargo

**2006 Forecast for 2026
2.7 million TEUs**

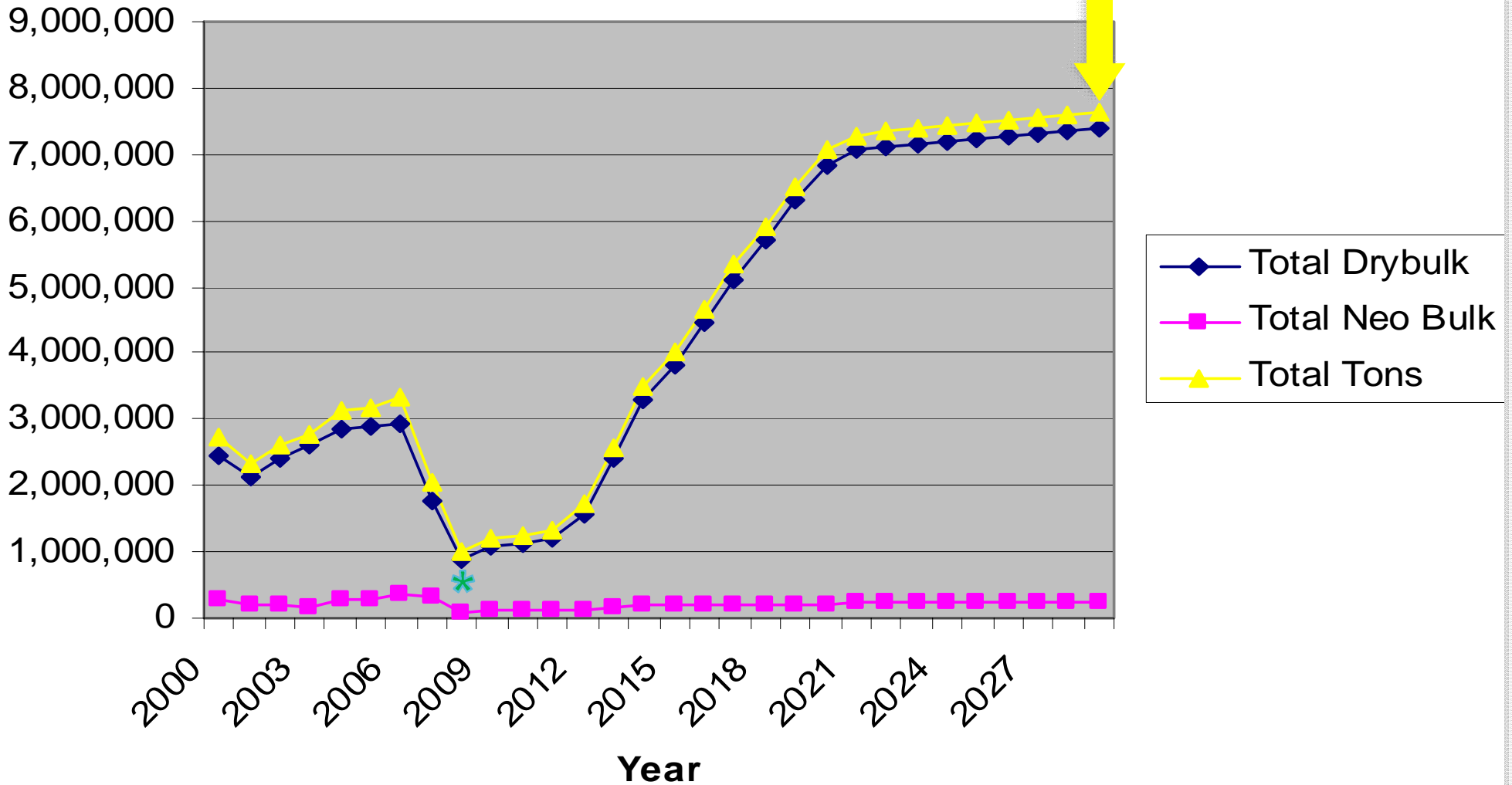


* FY 08/09 Actual Throughput

* 2006 Forecast for years- FY 2008/09, 2012, 2016 & 2026

Dry Bulk and Neo-Bulk Cargo

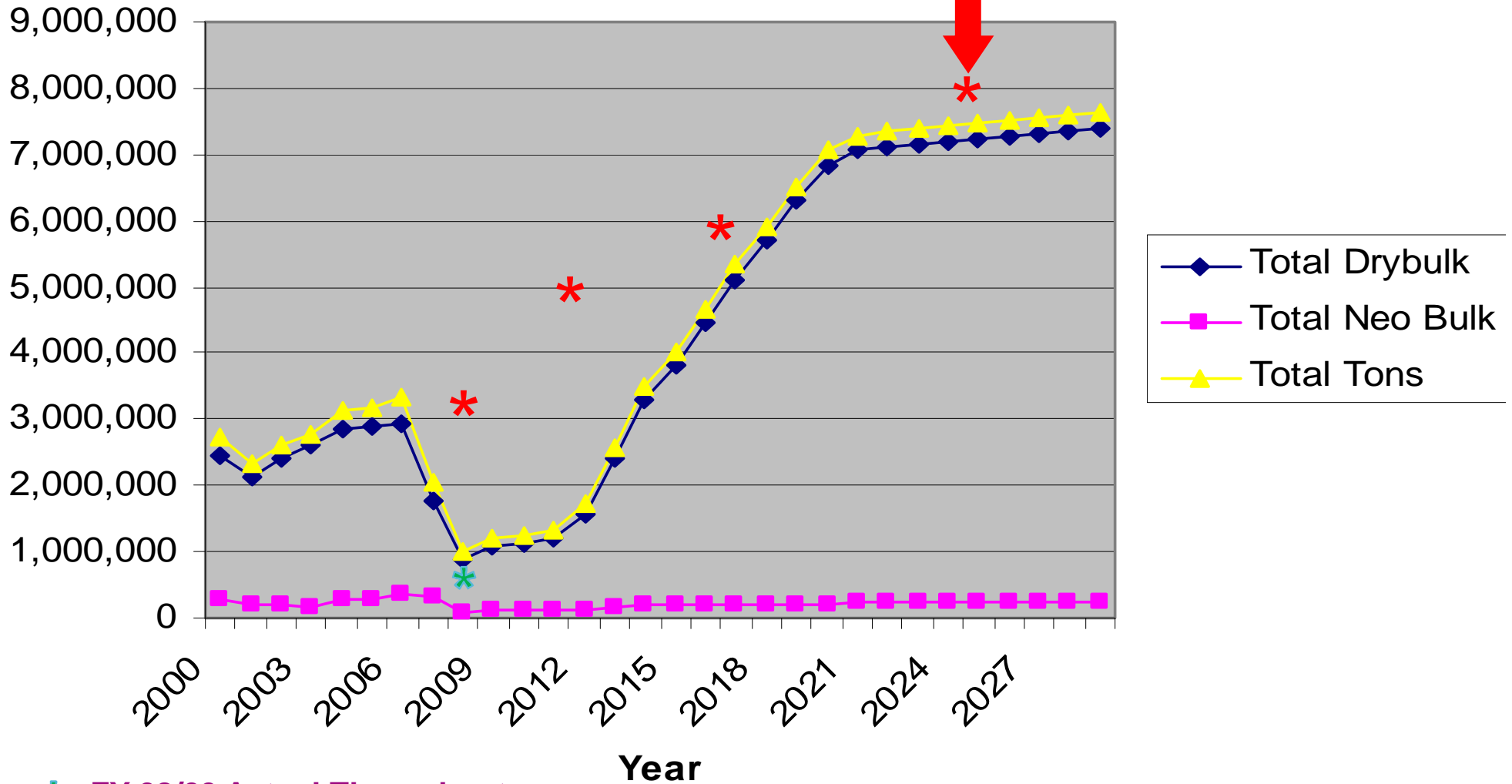
**FY 28/29:
7.6 million tons**



* FY 08/09 Actual Throughput

Dry Bulk and Neo-Bulk Cargo

**2006 Forecast for 2026
8.0 million tons**

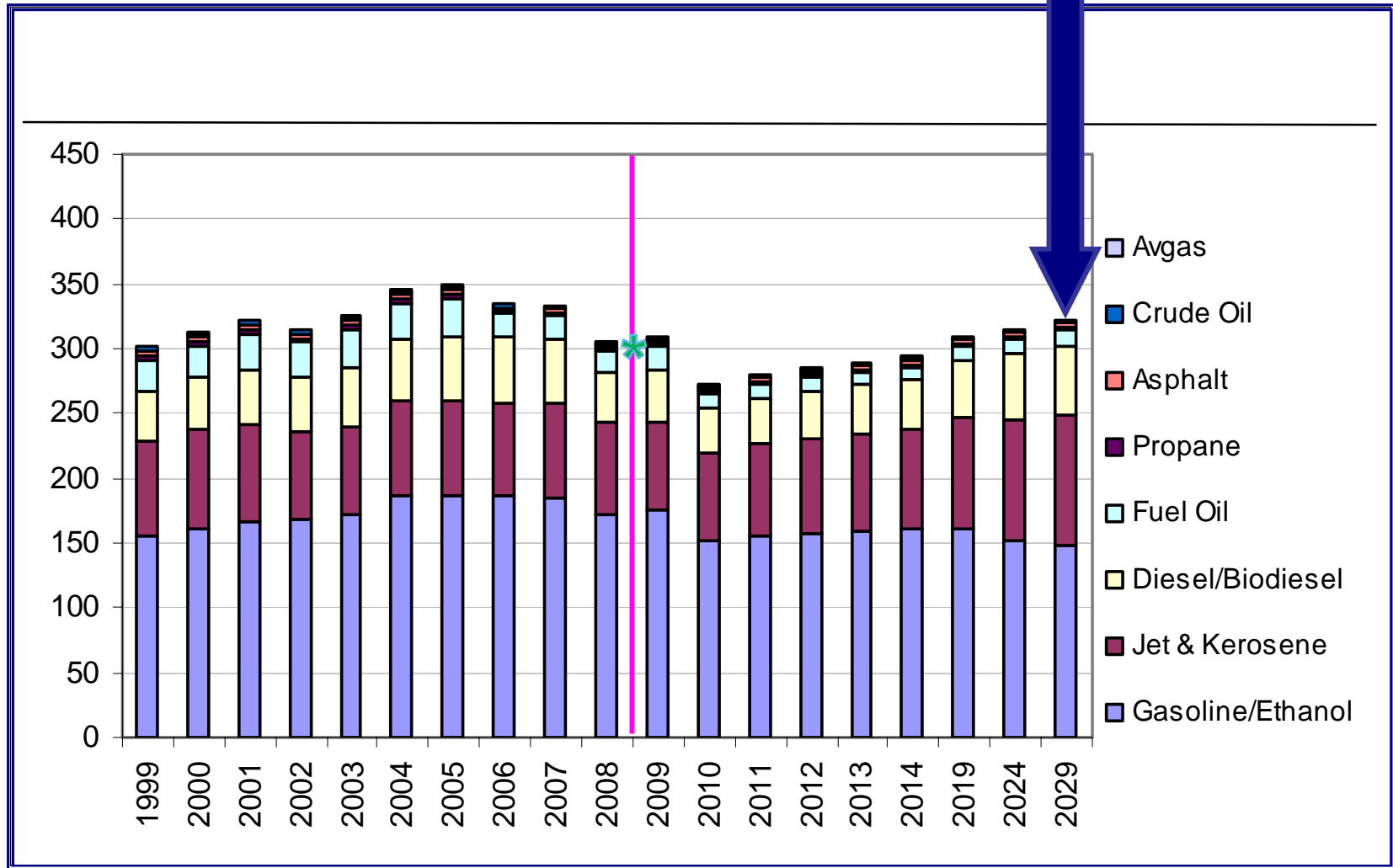


* FY 08/09 Actual Throughput

* 2006 Forecast for years- FY 2008/09, 2012, 2016 & 2026

Liquid Bulk (Petroleum)

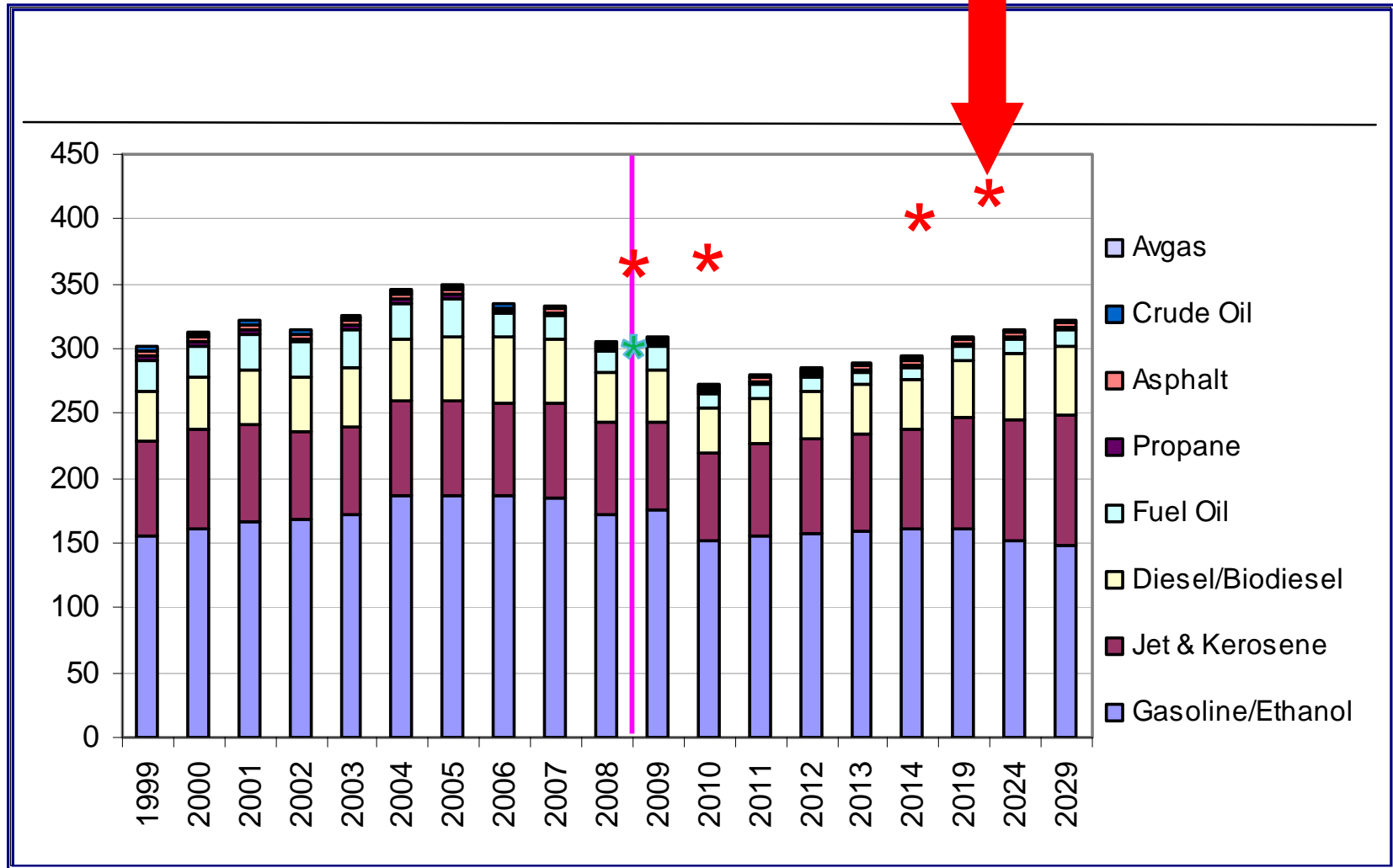
**FY 28/29:
323,000 barrels per day**



* FY 08/09 Actual Throughput

Liquid Bulk (Petroleum)

**2005 Forecast for 2020
435,000 barrels per day**

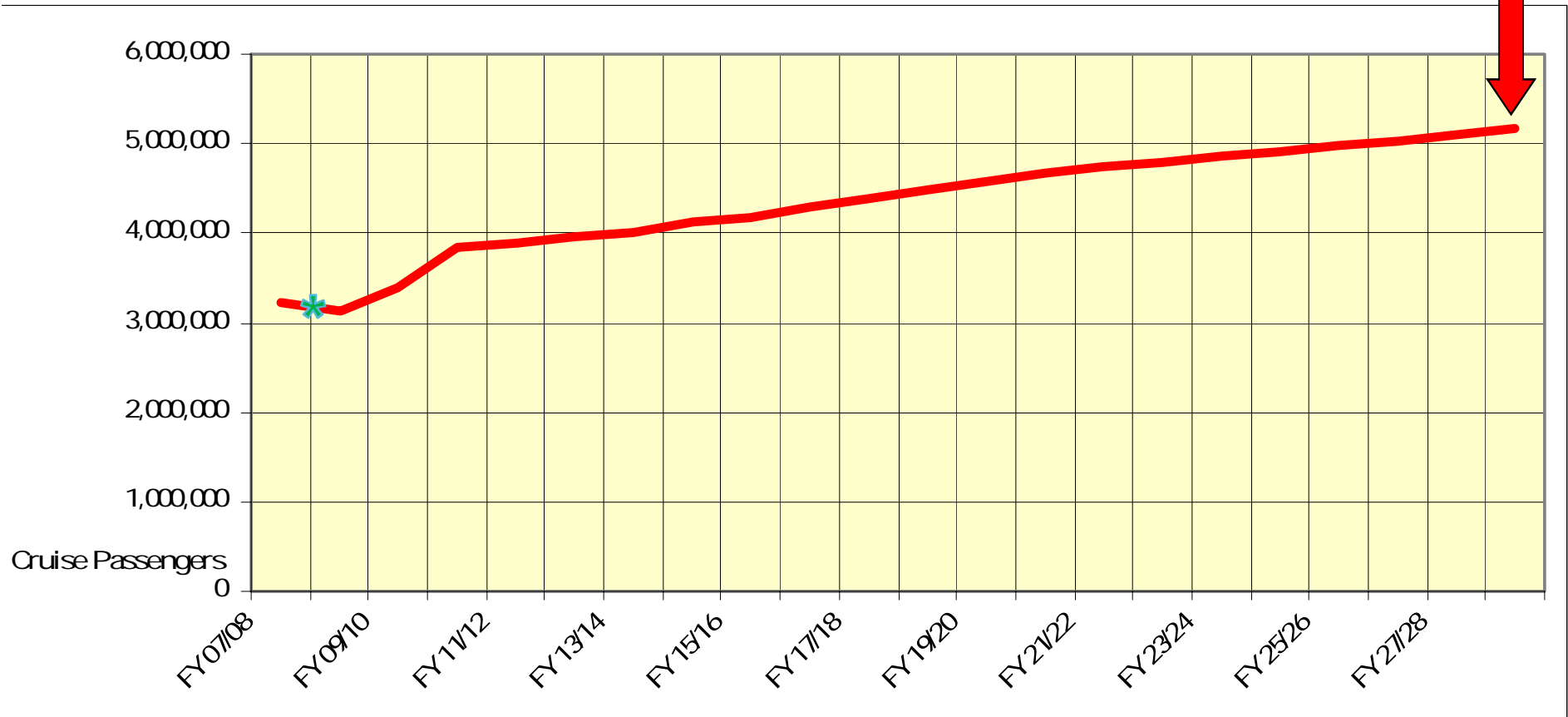


* FY 08/09 Actual Throughput

* 2005 Forecast for years- FY 2008/09, 2010, 2015 & 2020

Cruise

**FY 28/29:
5.1 Million Passengers ***

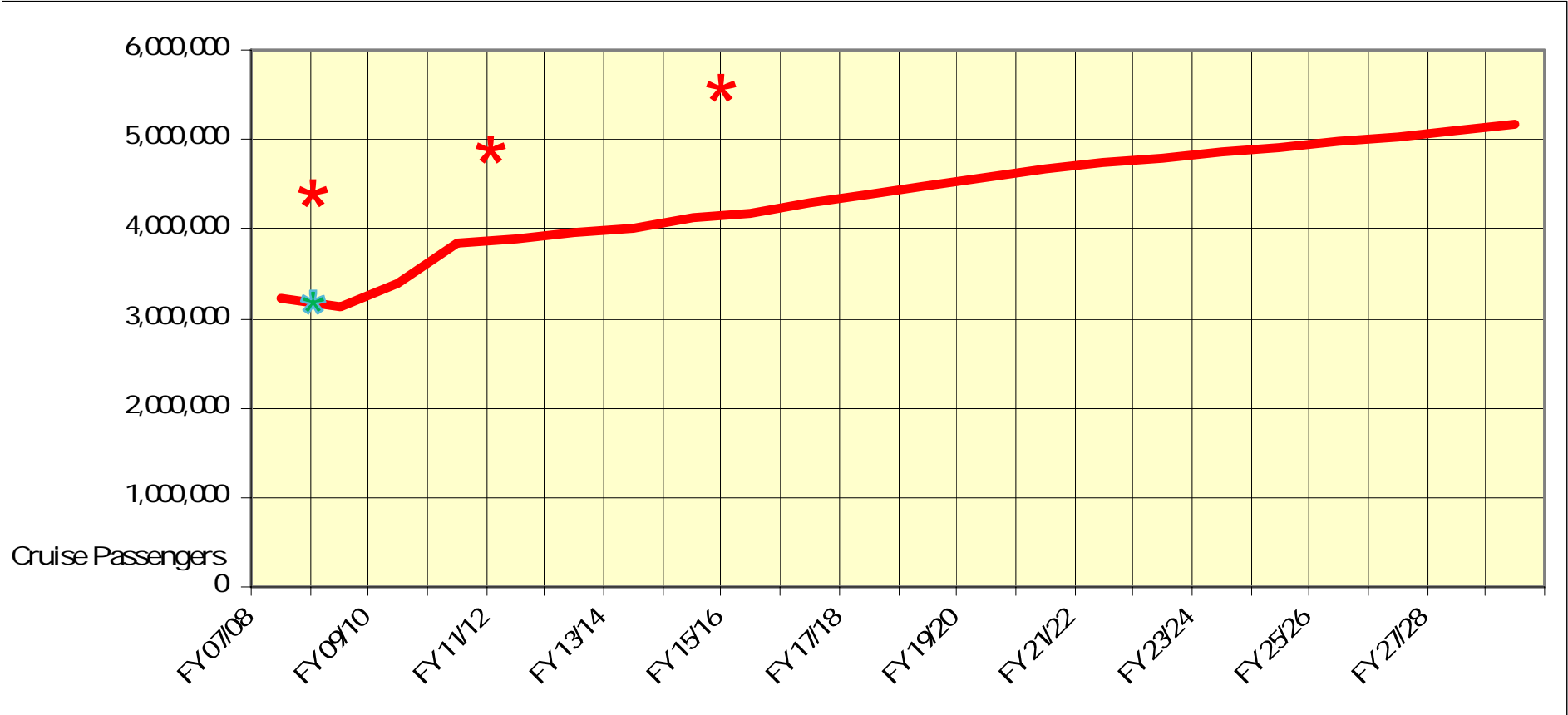
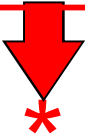


* Multi-Day & Daily Revenue Passengers

* FY 08/09 Actual Throughput

Cruise

**2006 Forecast for 2026
7.0 Million Passengers ***

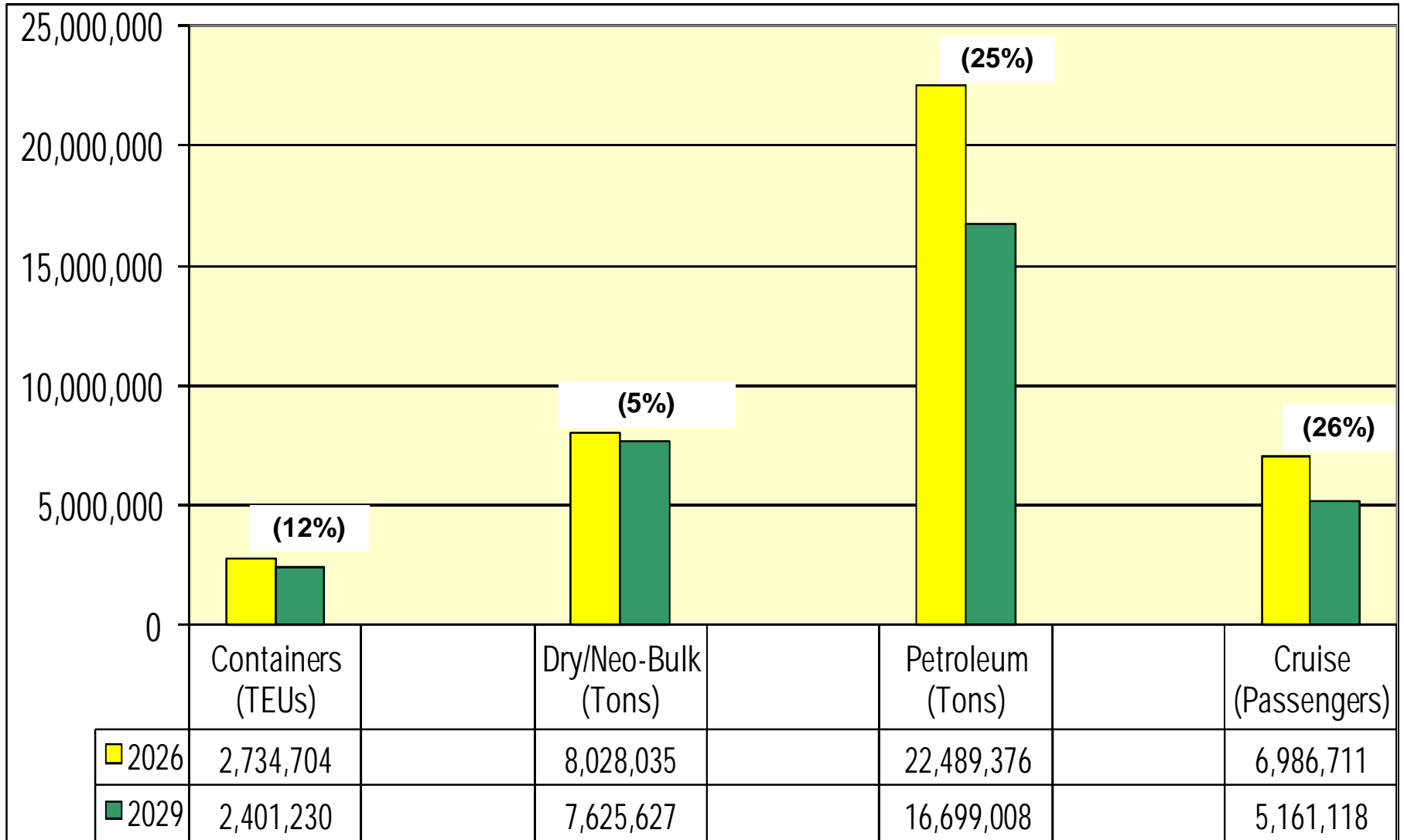


* Multi-Day & Daily Revenue Passengers

* FY 08/09 Actual Throughput

* 2006 Forecast for years- FY 2008/09, 2012, 2016 & 2026

Market Forecast Drives the Plan

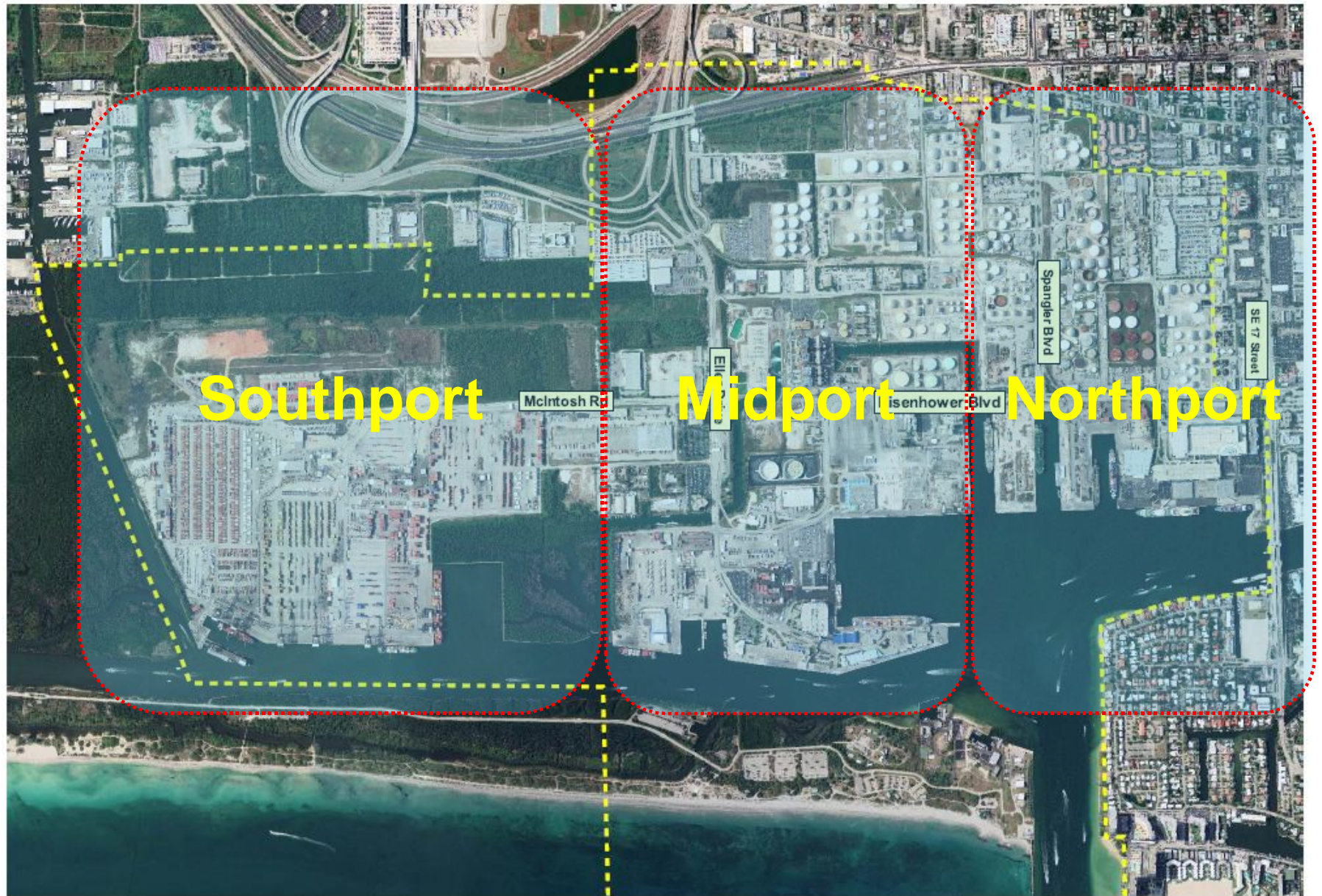


Port Everglades Facility/Infrastructure Needs

Over 20 year planning horizon

- Ability to berth fully laden Post-Panamax vessels; 7,000 TEUs
- More and longer cargo berths
- Rail to Southport and ICTF
- New berth for crushed rock/aggregate ship
- Longer cruise berths
- Reconfiguration of Northport slips
- Upland improvements to terminals and intermodal access

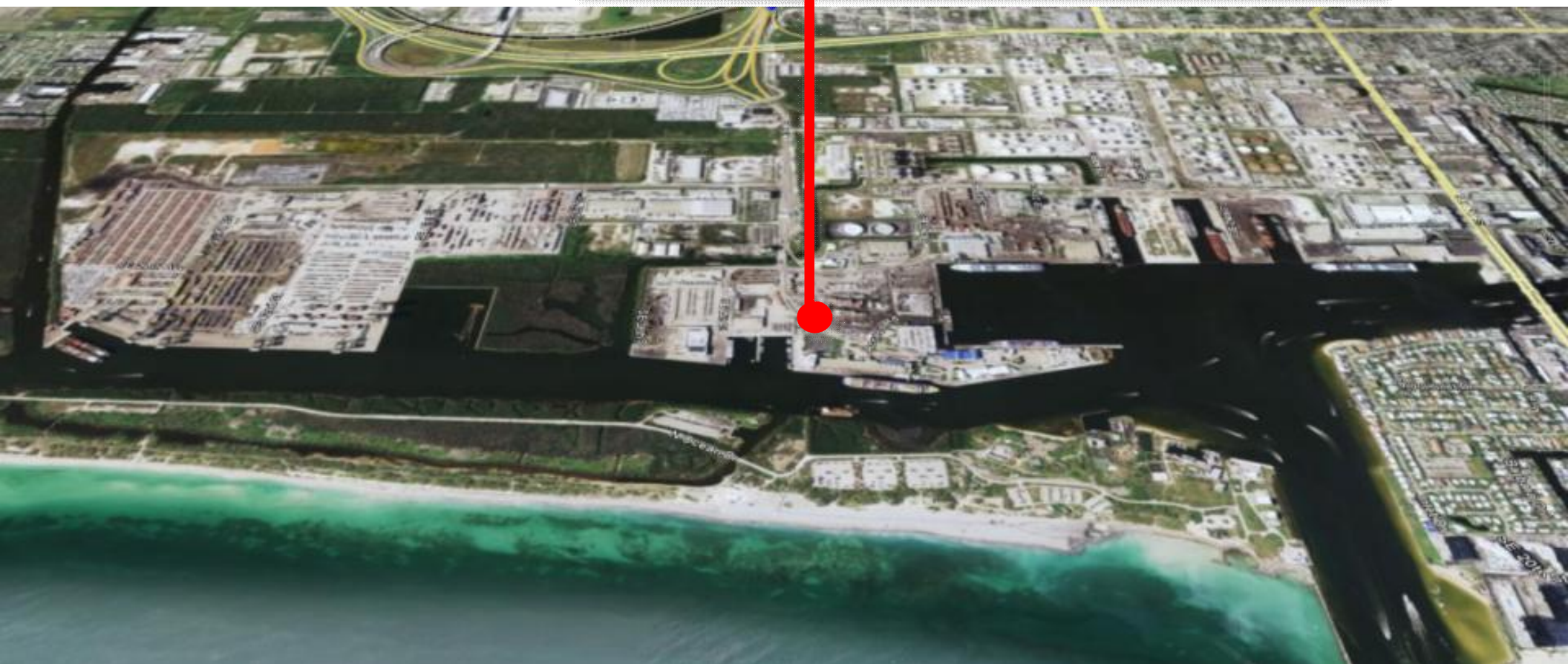
Port Everglades





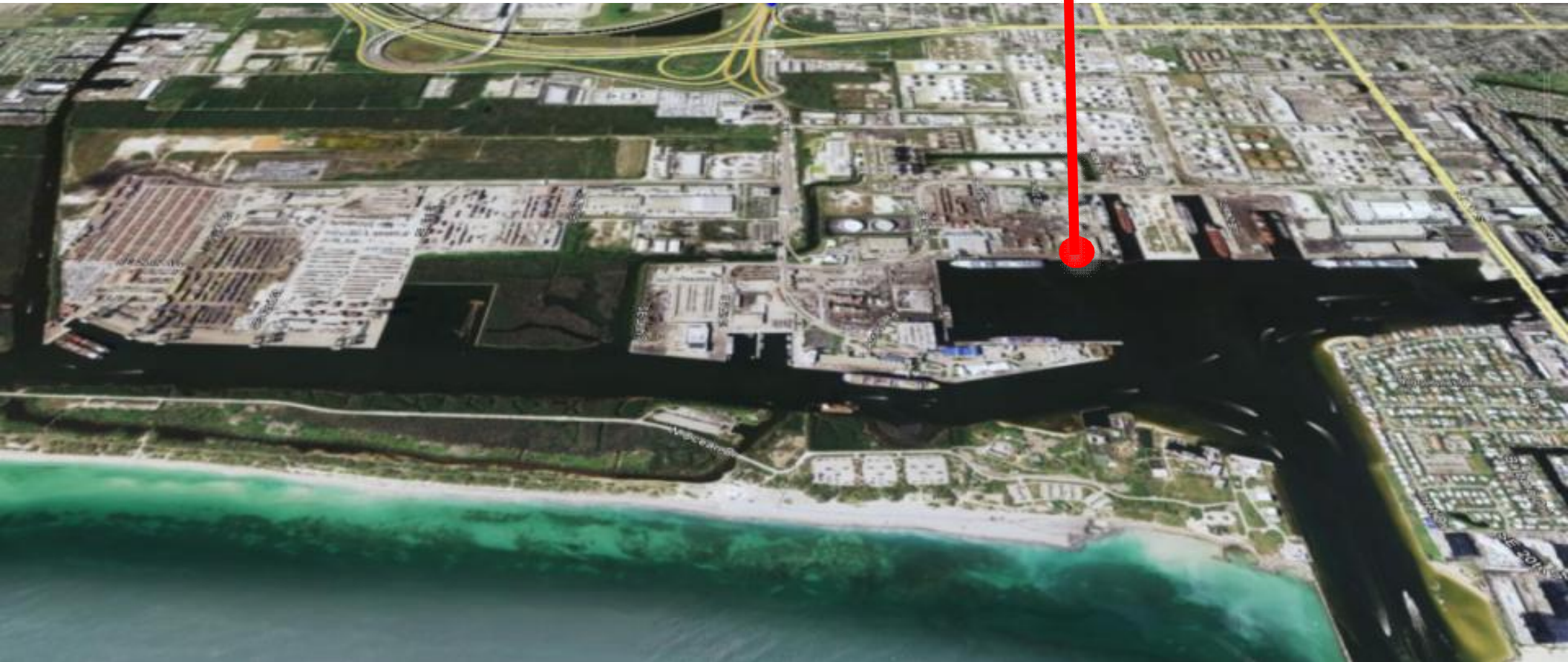
Midport Roadway (Eller Drive) Improvements

- Completed and in operation
- Added taxi staging lane and traffic improvements





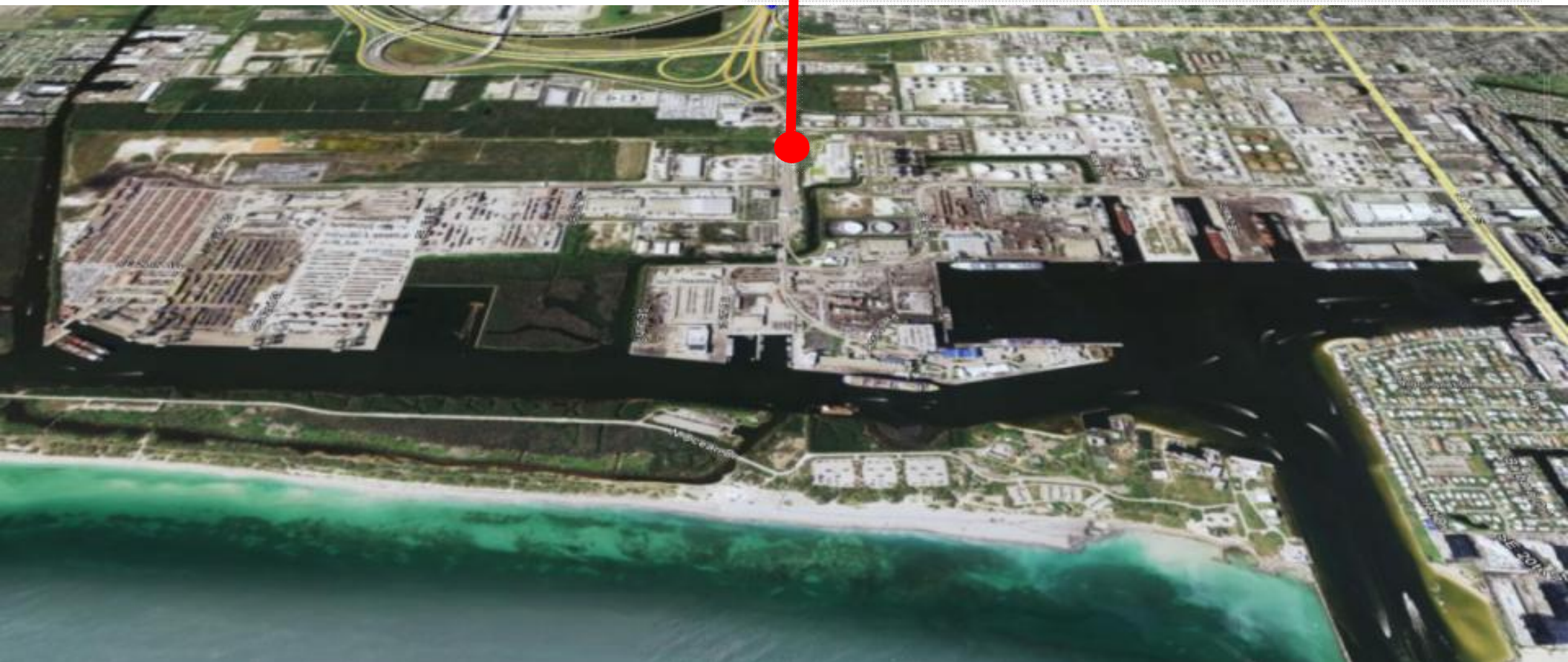
New Mobile Harbor
Crane and Re-power
Container Gantry
Crane at Midport





Eller Drive Overpass

- Construction start in 2011
- Initiates rail to Southport via a grade separated rail/roadway crossing



Intermodal Bridge

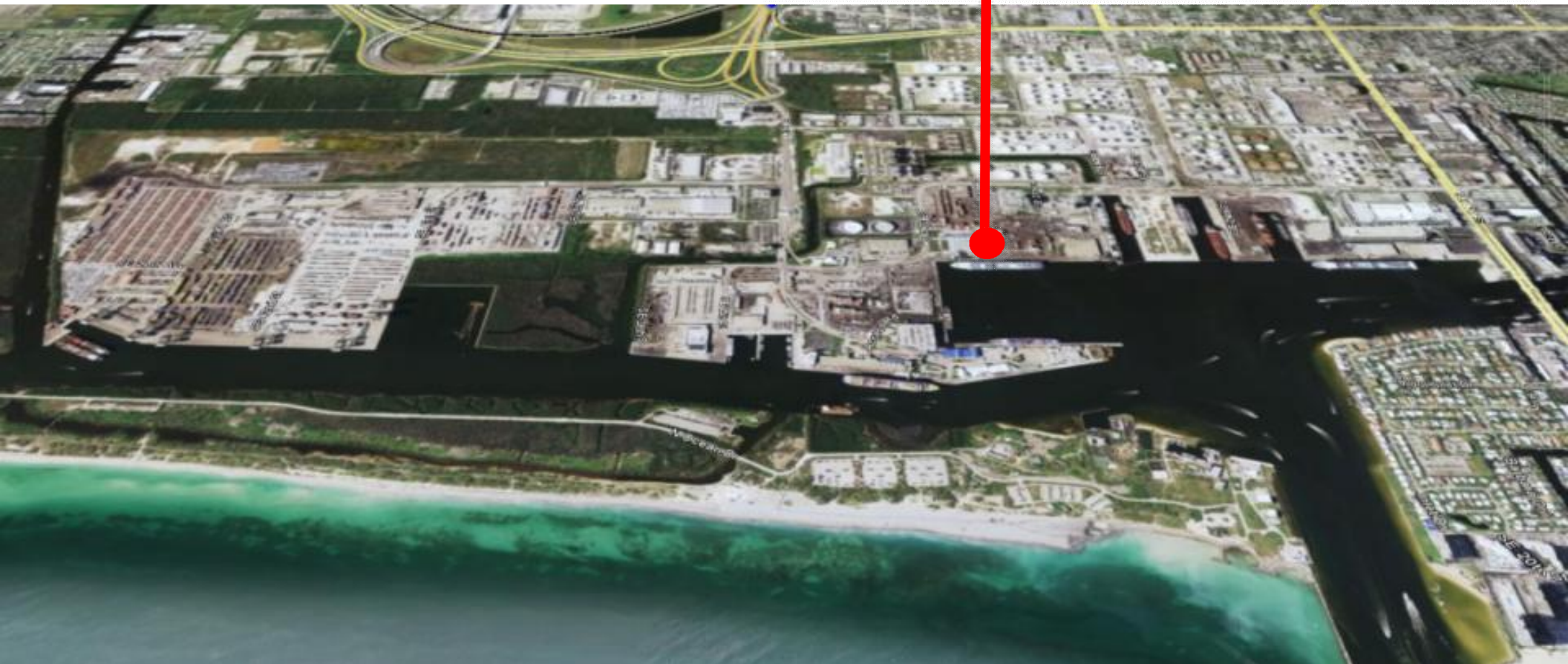
- “Manatee Crossing” Bridge opened June 10
- Connects Midport cargo terminals to Southport terminals without re-entering security gate





Cruise Terminal 18 Expansion

- Completed and in operation
- Homeport to the world's largest cruise ship



Southport Container Yard Improvements

- Under construction (to be completed in Oct 2010)
- 41 acres of container storage yards



Turning Notch Project



August 31, 2010

- The 2006 Plan called for lengthening in two phases

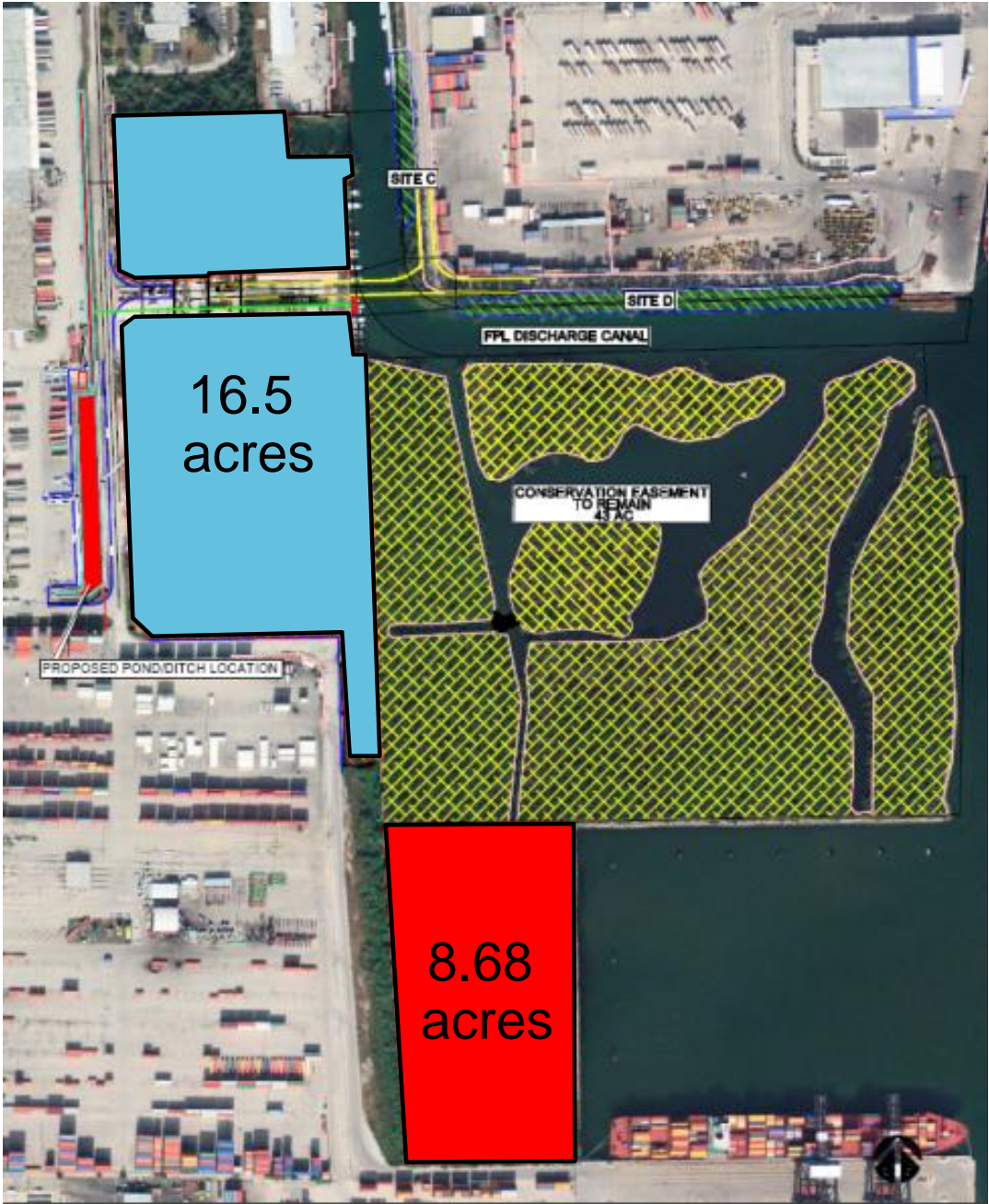
Turning Notch Project



August 31, 2010

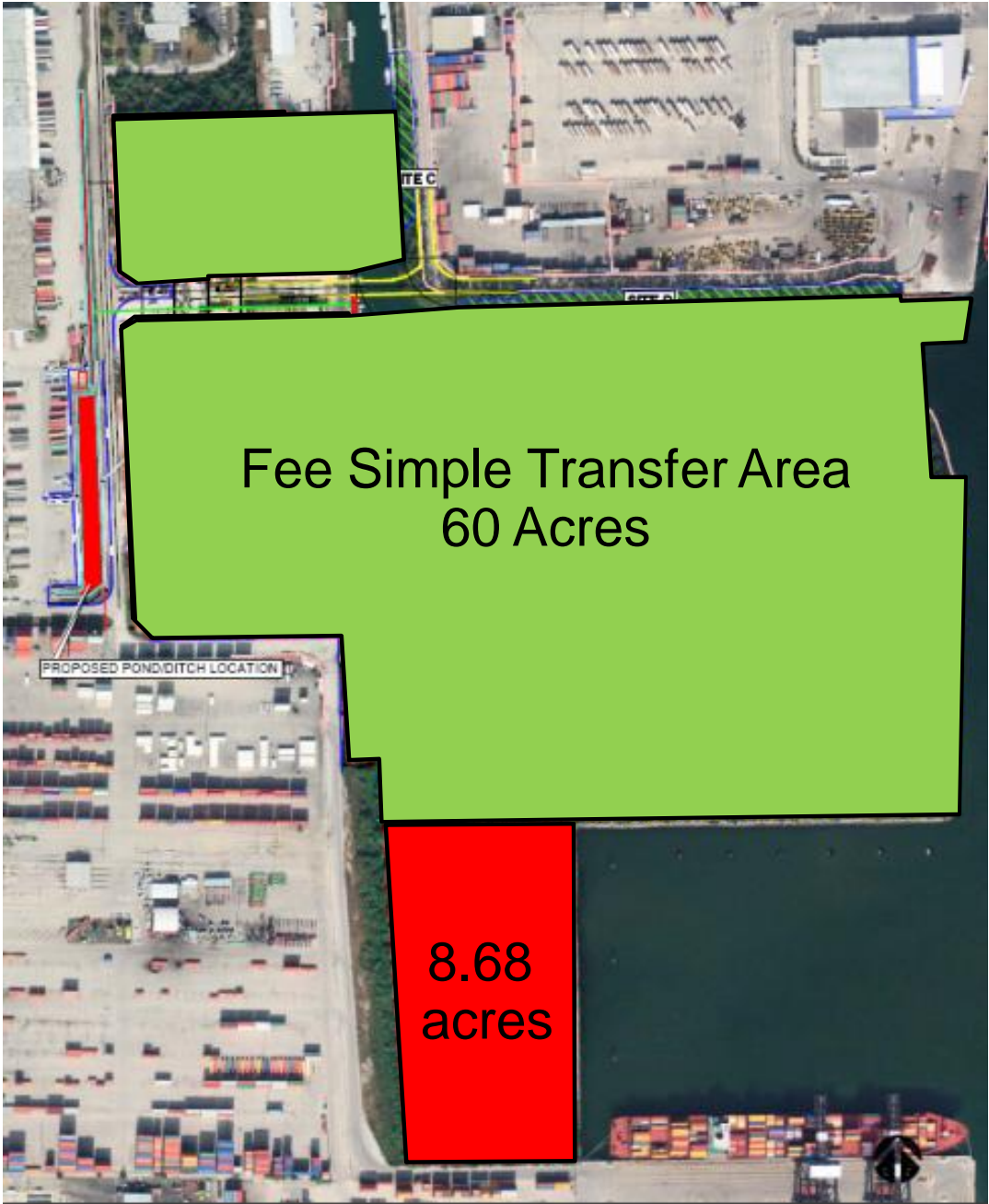
- The 2006 Plan called for lengthening in two phases

Conservation Easement – Upland Enhancement



- 8.68 acres is replaced with approximately 16.5 acres
- Conservation Easement becomes approximately 60 acres of Fee Simple Area

Conservation Easement – Upland Enhancement



- 8.68 acres is replaced with approximately 16.5 acres
- Conservation Easement becomes approximately 60 acres of Fee Simple Area

Turning Notch Project 1 (at Existing Water Depth)



- August 10, 2010 BOCC approves agreement with FDEP on release of Conservation Easement
- Project 1 included in Port's 5-year Capital Improvement Program
- Projected Broward County Economic Impact
 - 3,843 Local Jobs
 - \$9.4 Million per year in Local Taxes
 - \$173.6 Million per year in Economic Activity

August 31, 2010

Turning Notch Project 2



August 31, 2010

- May 4, 2010 BOCC supports continuing with fully funded ACOE study
- Benefit/Cost Ratio 2/1
- Projected Broward County Economic Impact
 - 1,037 Local Jobs
 - \$2.6 Million per year in Local Taxes
 - \$43.3 Million per year in Economic Activity

PORT EVERGLADES/U.S. ARMY CORPS OF ENGINEERS DEEPENING & WIDENING PROGRAM

Draft National Economic Development (NED) Plan



PORT EVERGLADES/U.S. ARMY CORPS OF ENGINEERS DEEPENING & WIDENING PROGRAM SCHEDULE

Estimated Completion

**Draft National Economic Development
(NED) Plan completed**

**Provided to Port April
2010**

Draft EIS for Public Comment

Spring 2011

Design Start

November 2012

Chief Engineers Report

Fall 2013

Construction Start

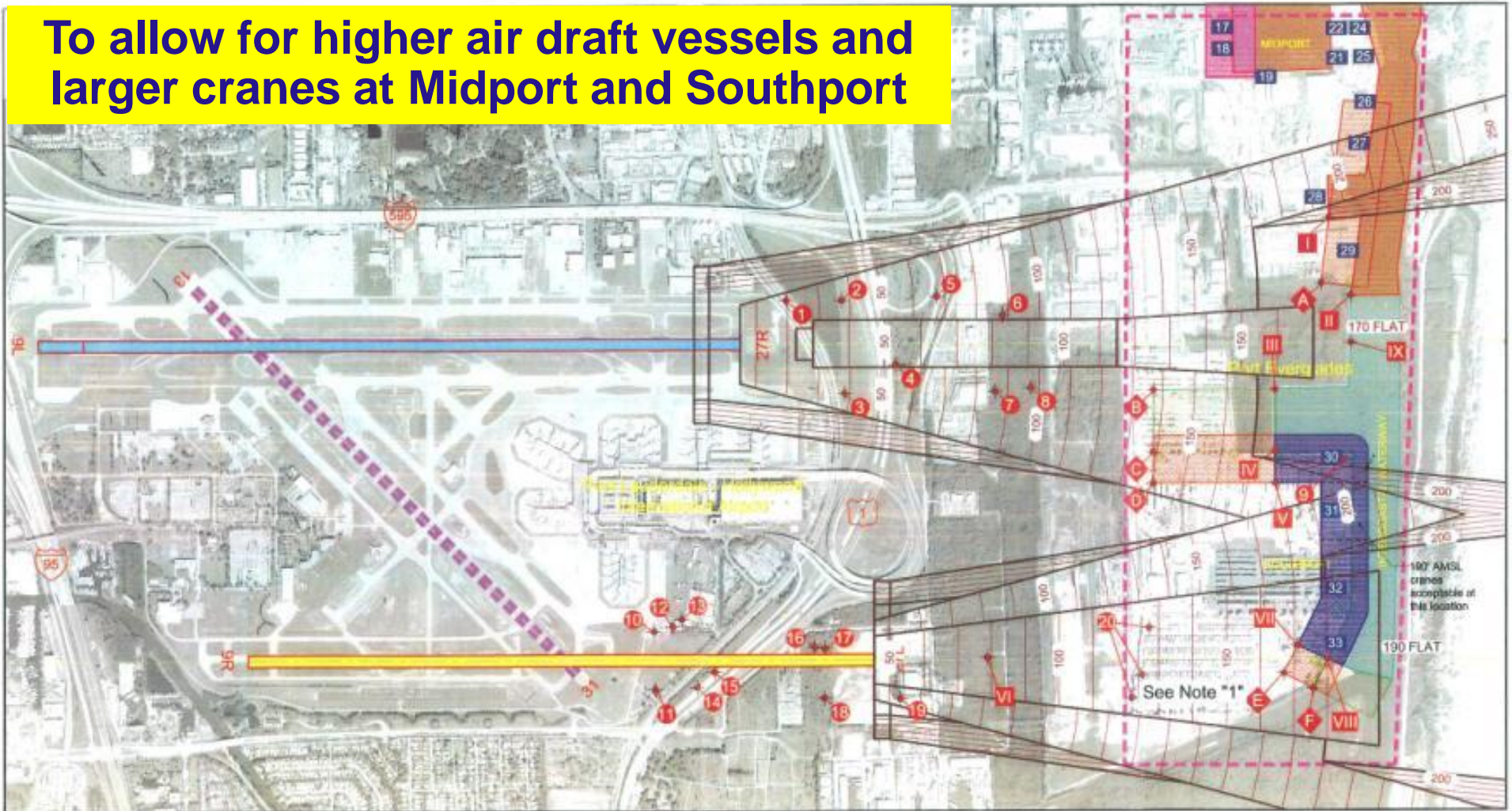
Winter 2015

Construction Complete

Winter 2017

Airport – Seaport Coordination on Object Heights

To allow for higher air draft vessels and larger cranes at Midport and Southport



- AIRPORT**
- Existing runway
 - Proposed Extended South Runway (27R-27L) from EIS team, Alternative B1b
 - Decommissioned runway
 - Extended runway centerline
 - Lowest composite surface
 - 200' Elevation contour of above-named surface, feet AMSL

- SEAPORT**
- Study area
 - Berth number
 - Existing crane envelope of operation approximately 160 feet AMSL
 - Existing crane envelope of operation approximately 260 feet AMSL
 - Existing cargo ships vessel area up to 55m (180 feet) above waterline
 - Existing cruise ships vessel area up to 62m (200 feet) above waterline
 - Proposed crane envelope of operation
 - Proposed cargo ships vessel area

- CRITICAL OBSTACLES**
- Obstacles in databases (See Table 1)
 - Other likely critical obstacles
 - Proposed critical obstacles

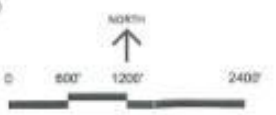


Figure 16
LOWEST COMPOSITE SURFACE OVER STUDY AREA PROPOSED CONDITIONS
 Airspace Obstruction Study
 Port Everglades Cranes and Vessels
 Fort Lauderdale-Hollywood International Airport
 June 2009

JACOBS CONSULTANCY
 Airport Management Consulting

Airport – Seaport Coordination on Object Heights

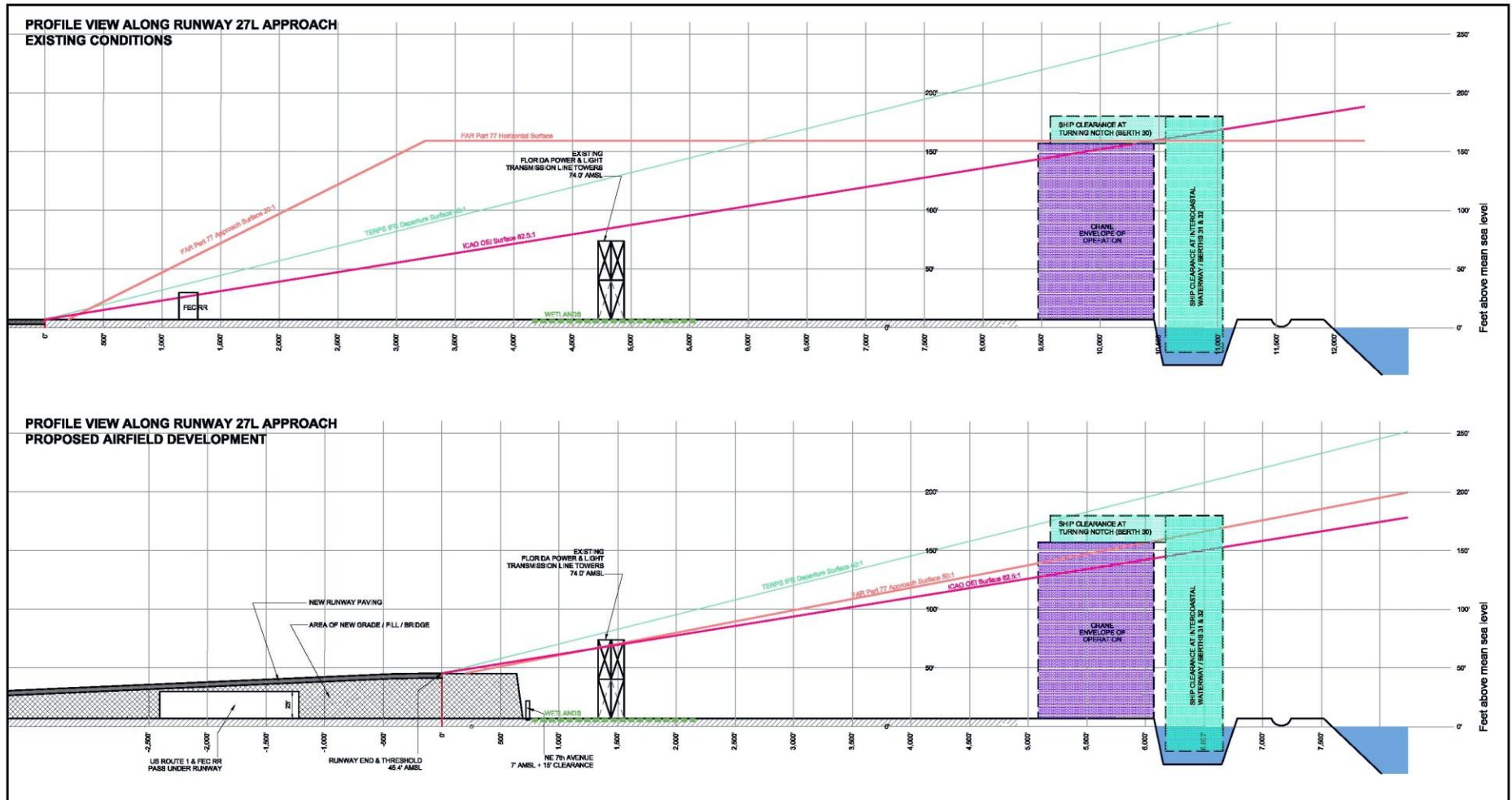
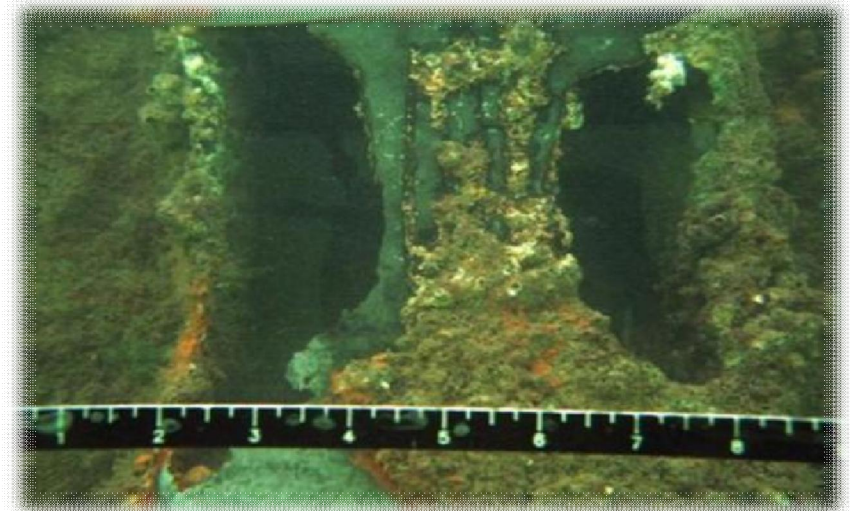


Figure 9
PROFILE VIEW
 Airspace Obstruction Study
 Port Everglades Cranes and Ships
 Fort Lauderdale-Hollywood International Airport
 November 2008
JACOBS CONSULTANCY
 Airport Management Consulting

0 400' 800' 1600'
 WITH 10x VERTICAL EXAGGERATION
DRAFT
 November 16, 2008

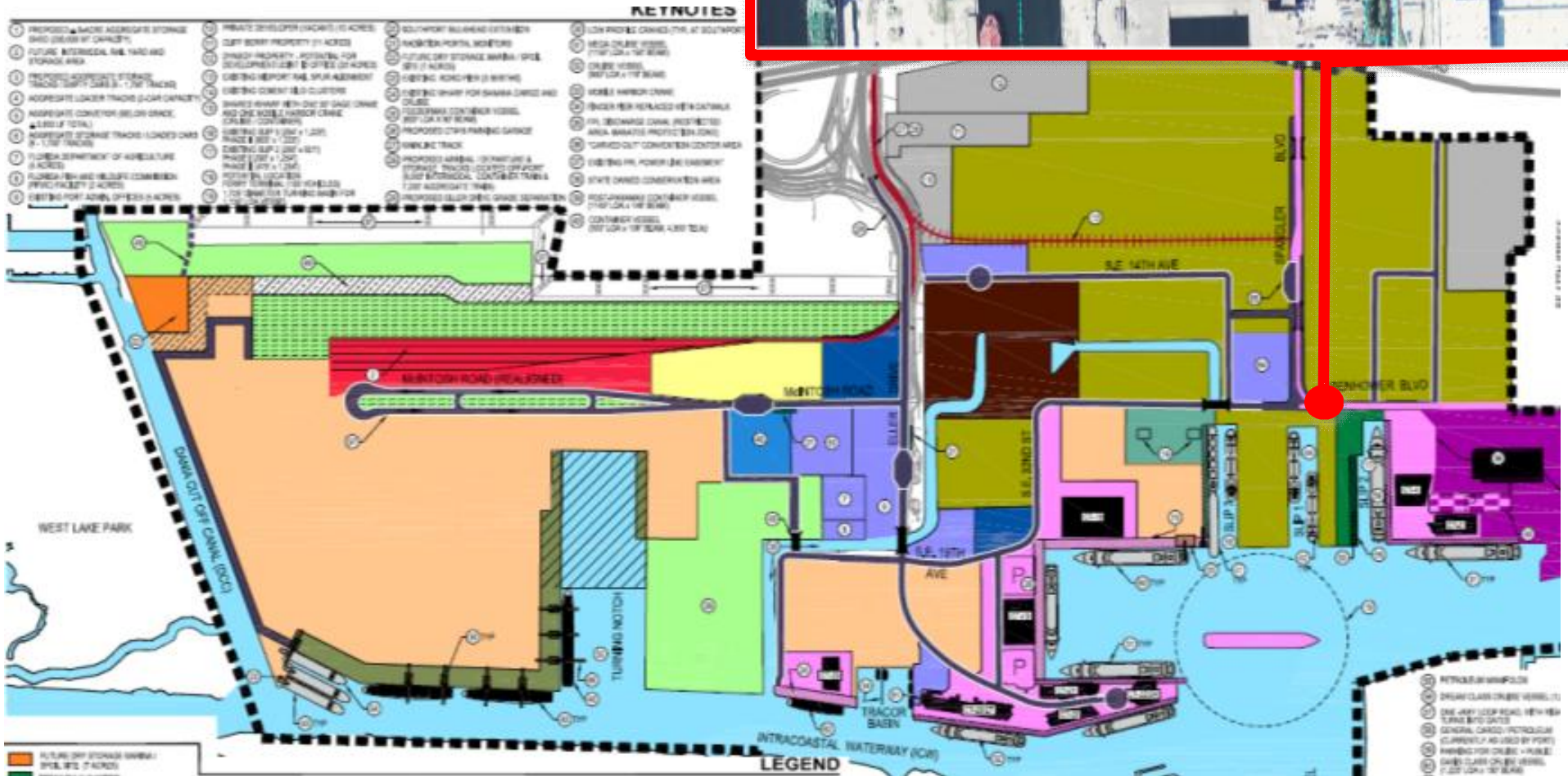
Port Wide Need for New Bulkheads

- 5-year Plan
 - Berths 9,10
- 10-year Plan
 - Berths 1,2,3
 - Berths 16, 17, 18
- 20-year Plan
 - Berths 19, 20
 - Berths 7, 8, 8A
 - Berths 21, 22
 - Berths 14, 15
 - Berth 4, 5
 - Berths 23, 24, 25
 - Berths 11, 12, 12A, 13, 13A



5-year Master Plan

By-Pass Road Phase 1

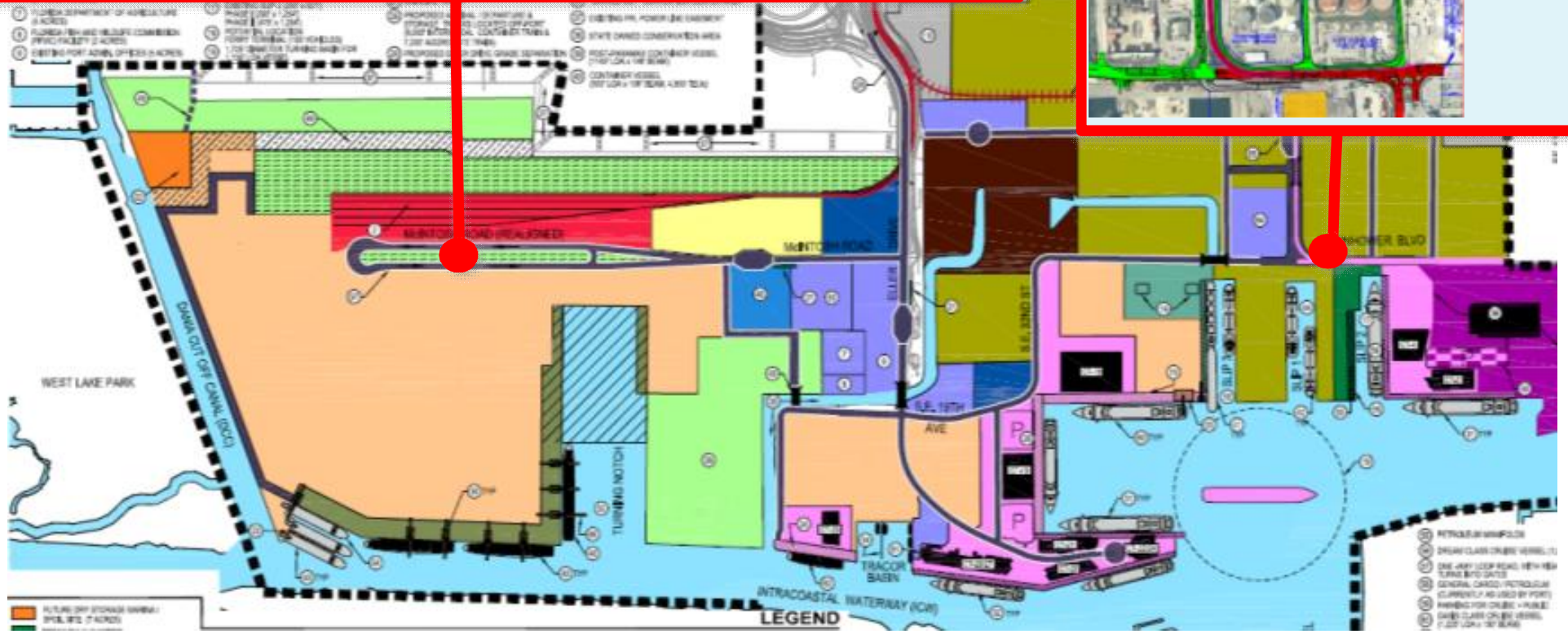


5-year Master Plan

McIntosh Road Improvements



By-Pass Road Phase 2



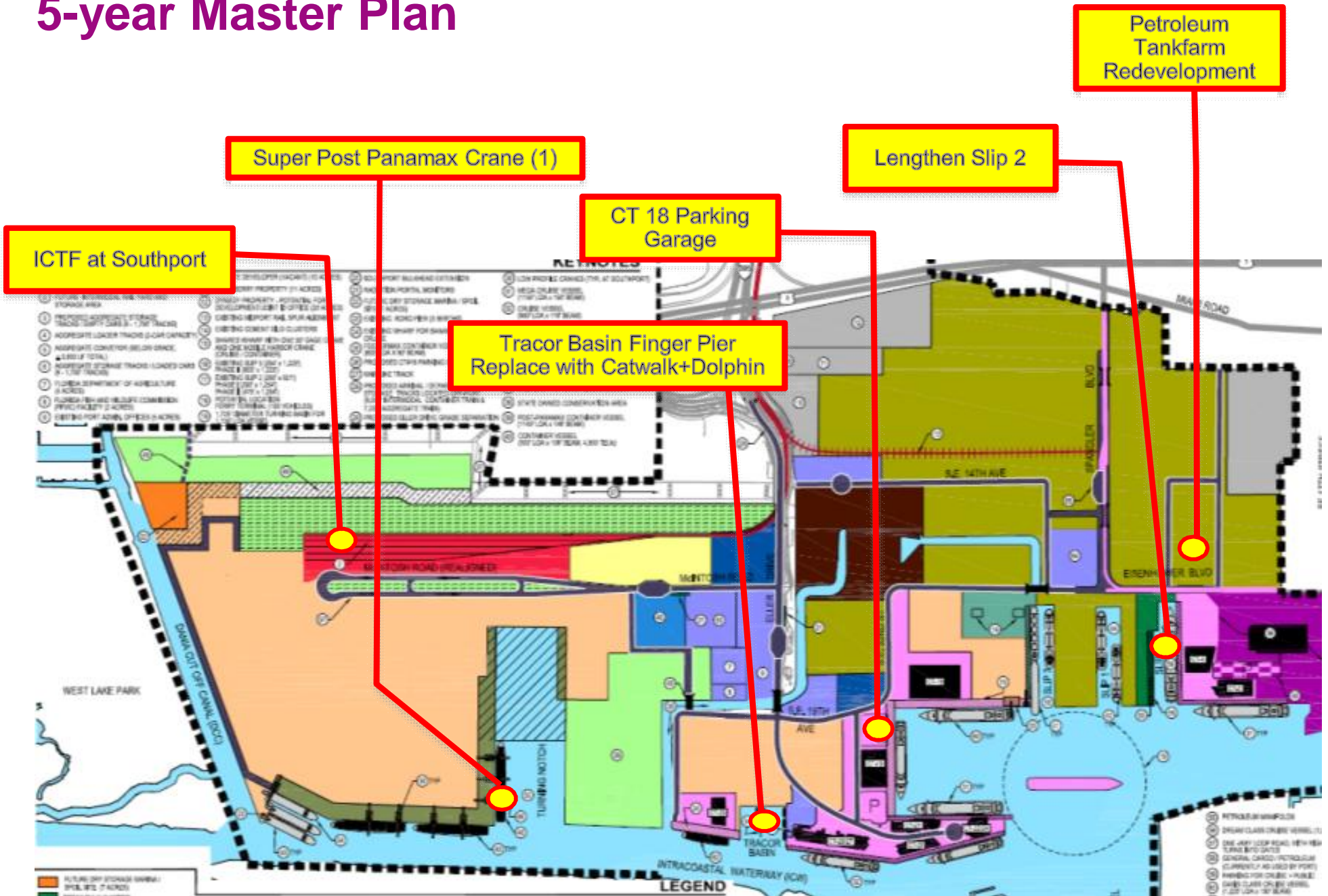
5-year Master Plan

Cruise Terminal Improvements at CT2, CT19, CT21 & CT26

- Carnival Corp. Agreement
- In planning
- Improves and enlarges operational areas at cruise terminals



5-year Master Plan

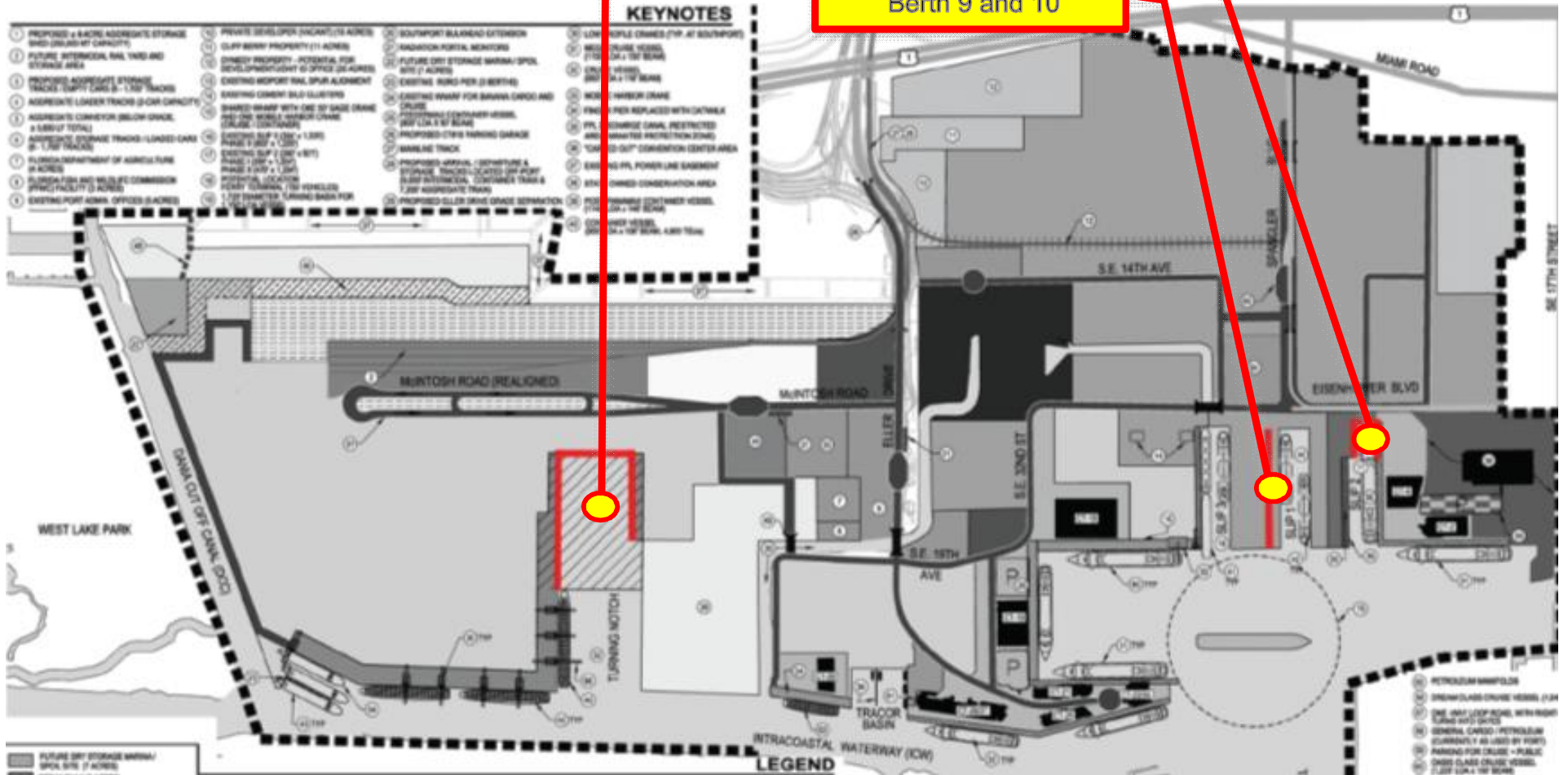


5-year Master Plan, Bulkhead Projects

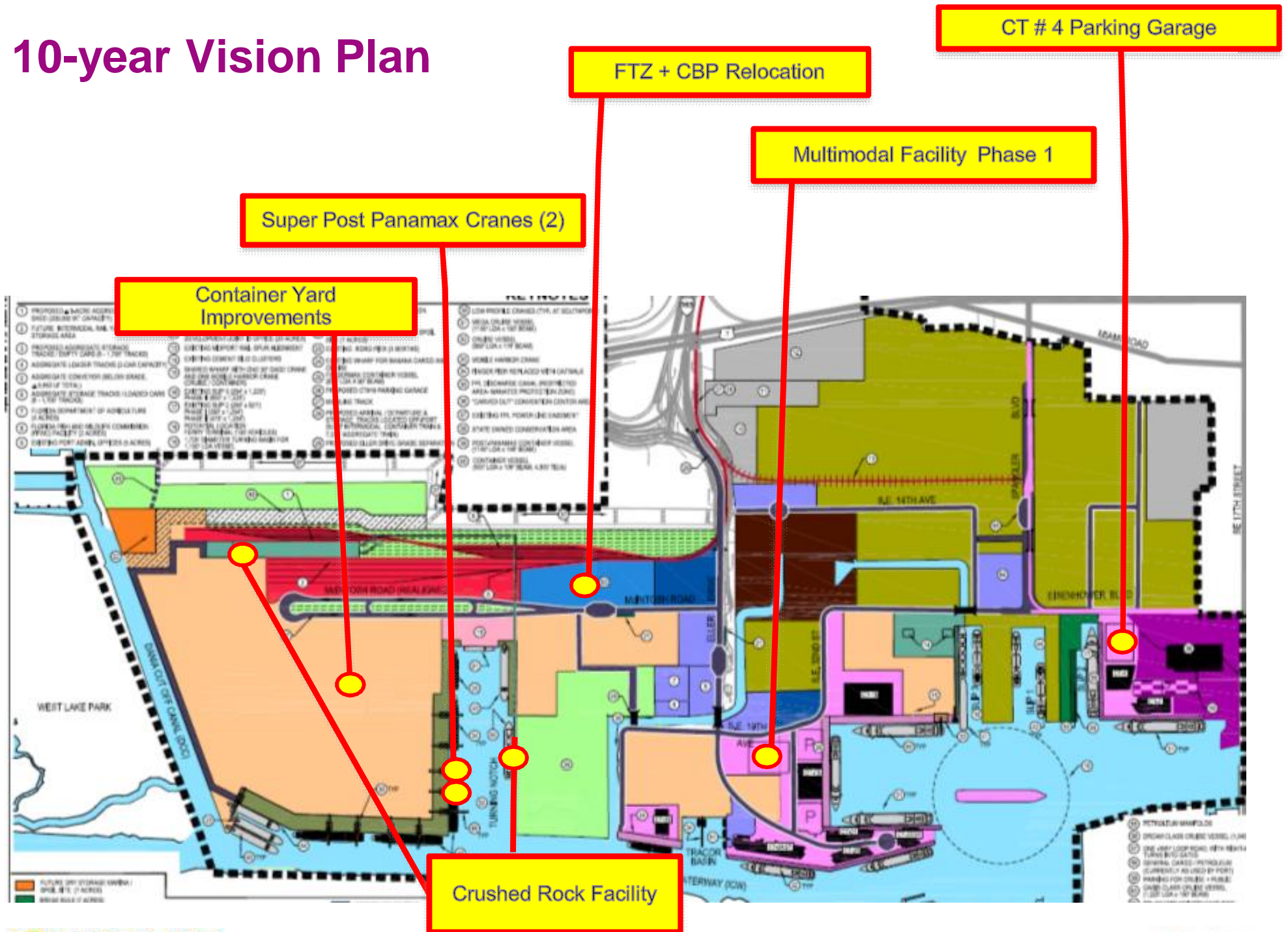
New Bulkhead for Expanded Turning Notch

New Bulkhead for Slip 2 Expansion

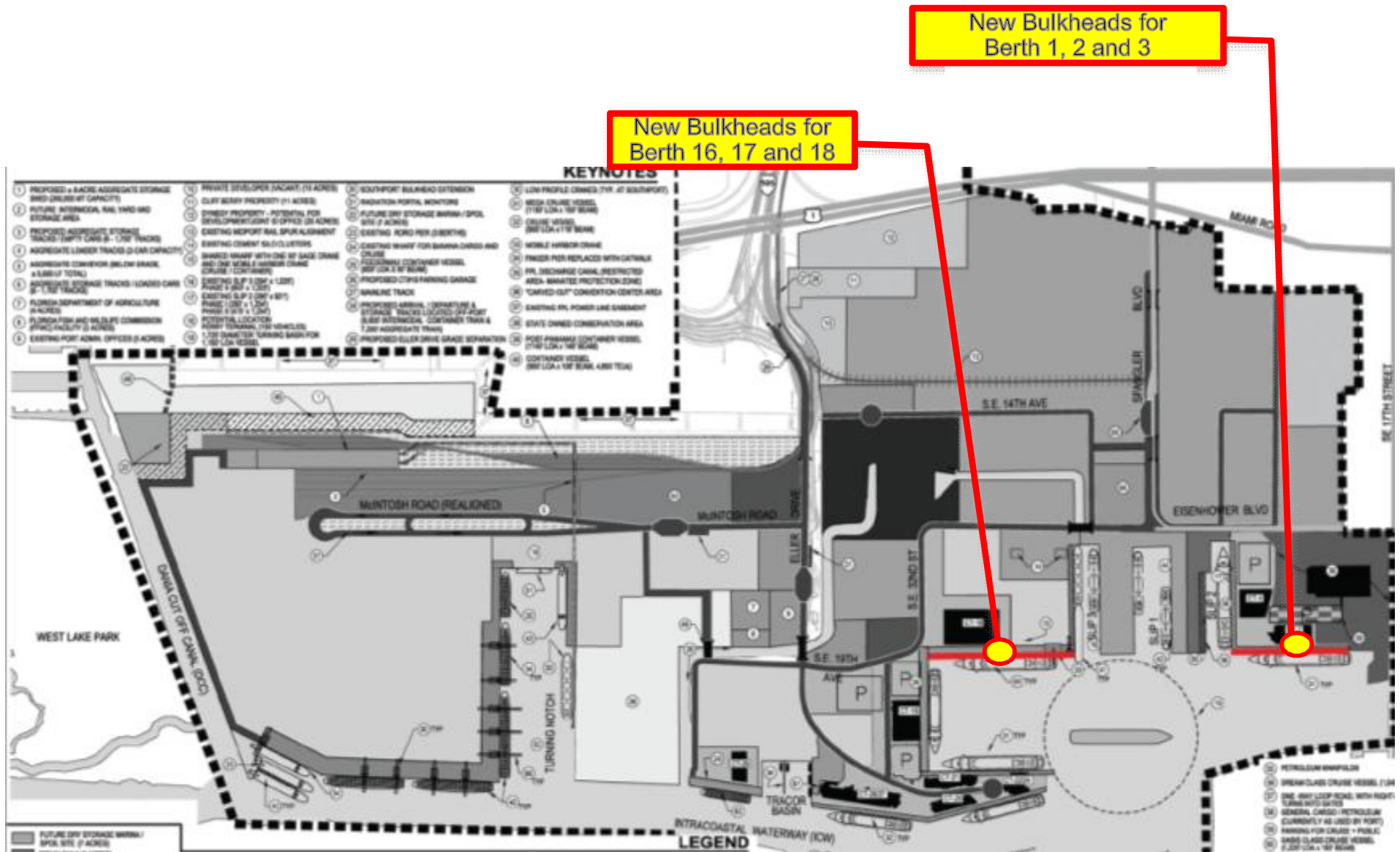
New Bulkheads at Berth 9 and 10



10-year Vision Plan



10-year Vision Plan, Bulkhead Projects

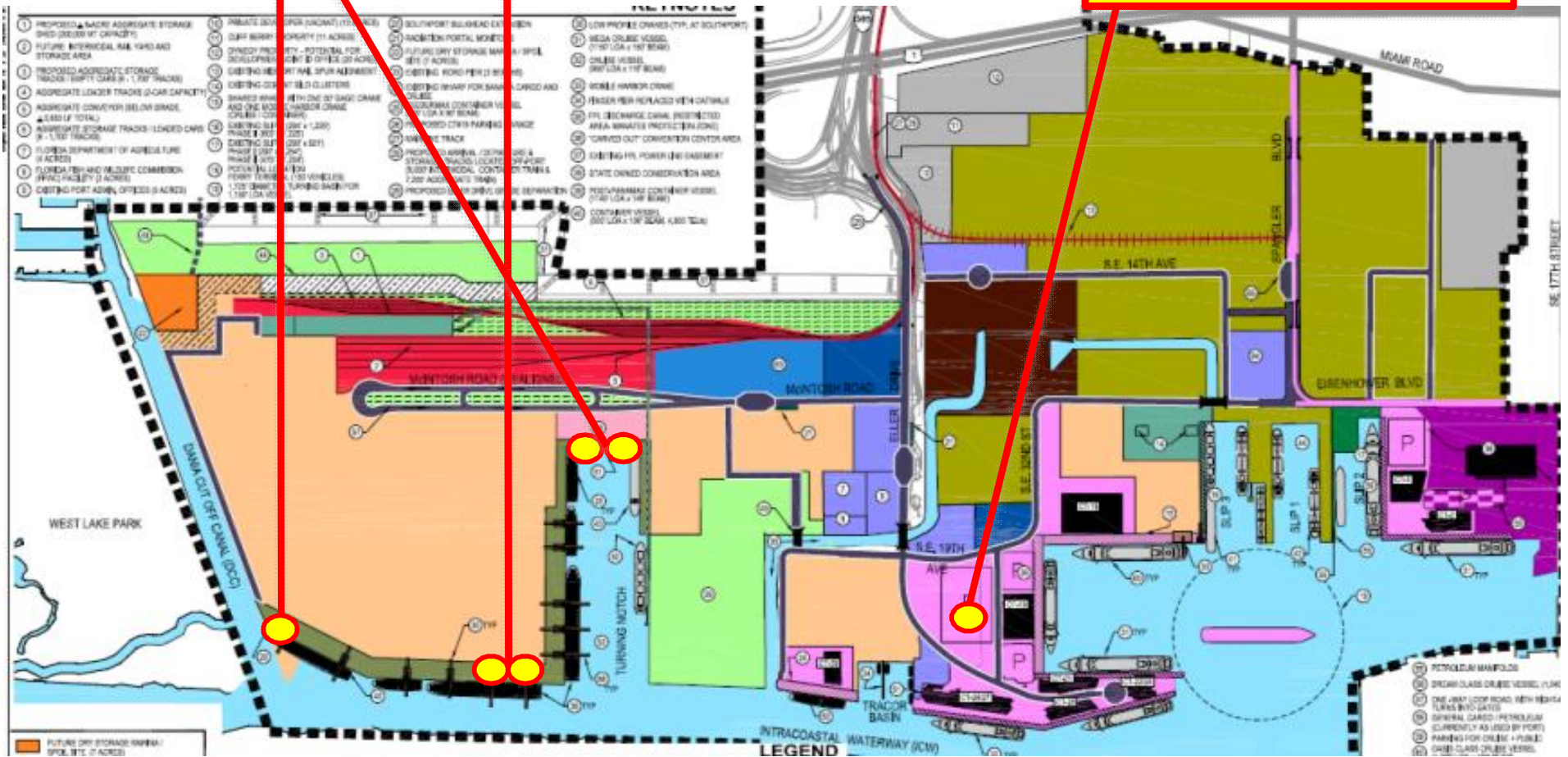


20-year Vision Plan

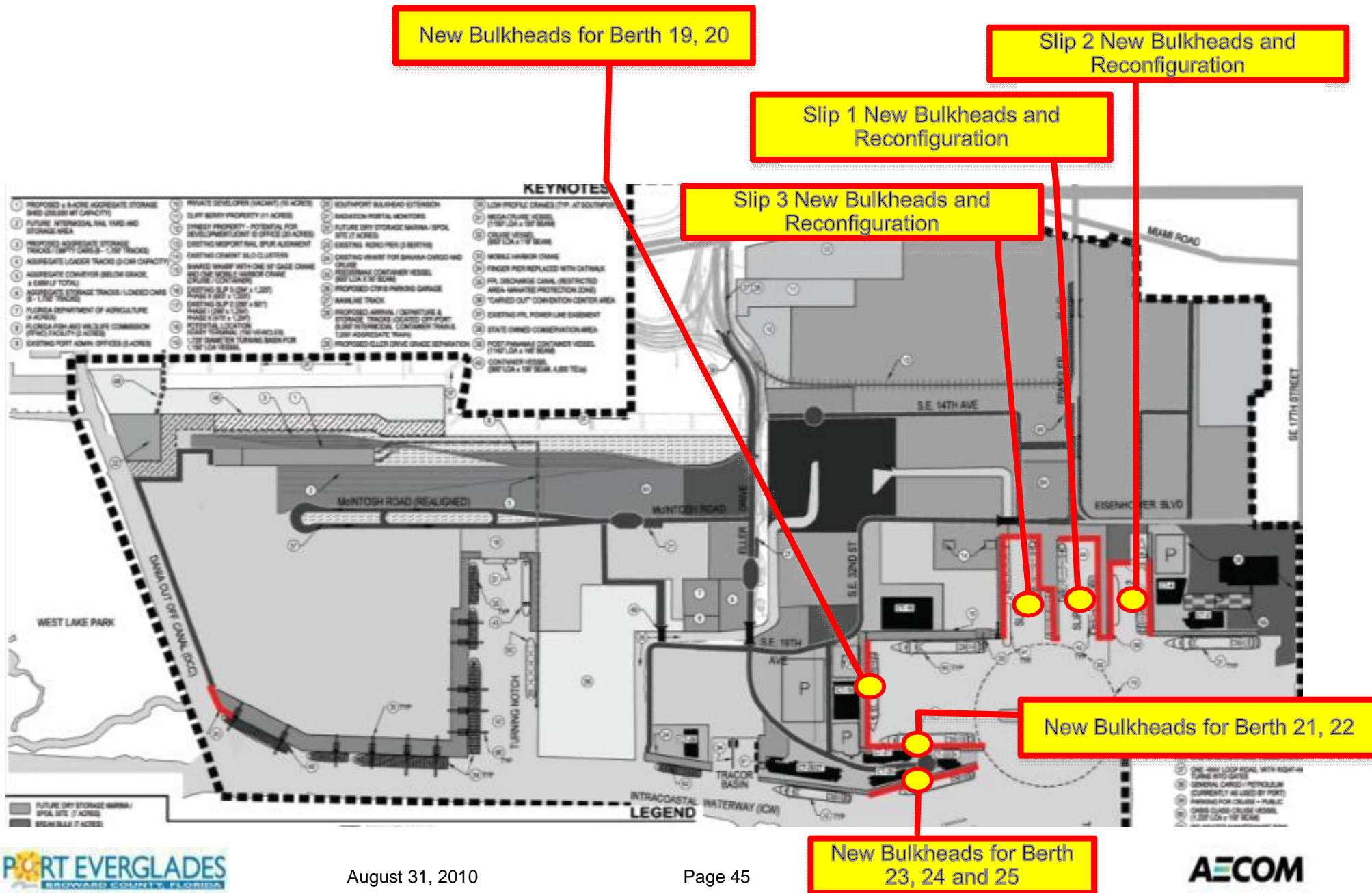
Relocate RORO Berths and Lengthen Berth 33

Super Post Panamax Cranes (2)

Multimodal Facility Phase 2



20-year Vision Plan, Bulkhead Projects



Estimated Cost Comparison of 2009 vs. 2006 Master/Vision Plans

	2009 Cost (\$M)	2006 Cost (\$M)
5-Year Master Plan	\$ 431	\$ 395
10-Year Vision Plan	\$ 567	\$ 737
20-Year Vision Plan	\$ 461	\$ 810
Total	\$ 1,459	\$ 1,942

Next Steps

- Anticipate request to Board of County Commissioners for adoption in December 2010
- Upon adoption, the Deep Water Component of the County's Comprehensive Plan will be modified
- Please tell us what you think
 - Submit your comments by visiting the Master Plan Website

www.portevergladesmasterplan.com