

SITE DATA:

PALM BEACH COUNTY JURISDICTION

TOTAL ACREAGE 16.70 AC.
EXISTING ZONING PO - PUBLIC OWNERSHIP
EXISTING LAND USE U/T - UTILITY & TRANSPORTATION

ALLOWED USES IDENTIFIED IN PALM BEACH COUNTY
UNIFIED DEVELOPMENT CODE ART. 3.B.2.
AZO - AIRPORT ZONING OVERLAY TABLE 3.B.2.B.

CONCURRENCY APPROVAL FOR 260 ROOM HOTEL AND
200,000 SQUARE FEET OF OFFICE, OR EQUIVALENT.

Palm Beach County Parking Standards:

HOTEL 1.25 SP. / ROOM
RETAIL 1 SP. / 200 S.F.

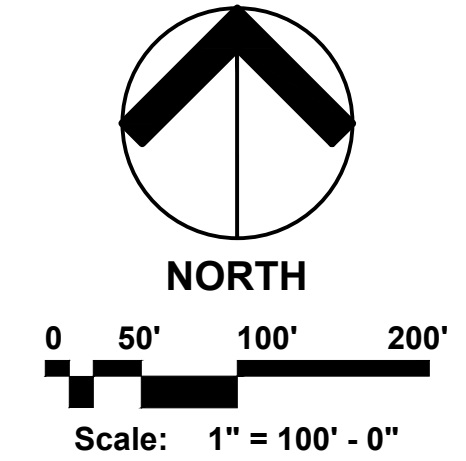
urban
design
kil
day
STUDIOS

Urban Planning & Design
Landscape Architecture
Communication Graphics

610 Clematis Street
Suite CU02
West Palm Beach, FL 33401
561.366.1100 FAX 561.366.1111
www.udkstudios.com
#LCC000035

Copyright:
All ideas, designs, arrangements, and plans
represented by this drawing are owned by and
the property of the designer, and were created
for the exclusive use of the specified project.
These ideas, designs, arrangements or plans
shall not be used by, or disclosed to any person,
firm, or corporation without the written
permission of the designer.

PBC PBIA Airport
Parcel I SDA
Palm Beach County, Florida
Conceptual Site Plan



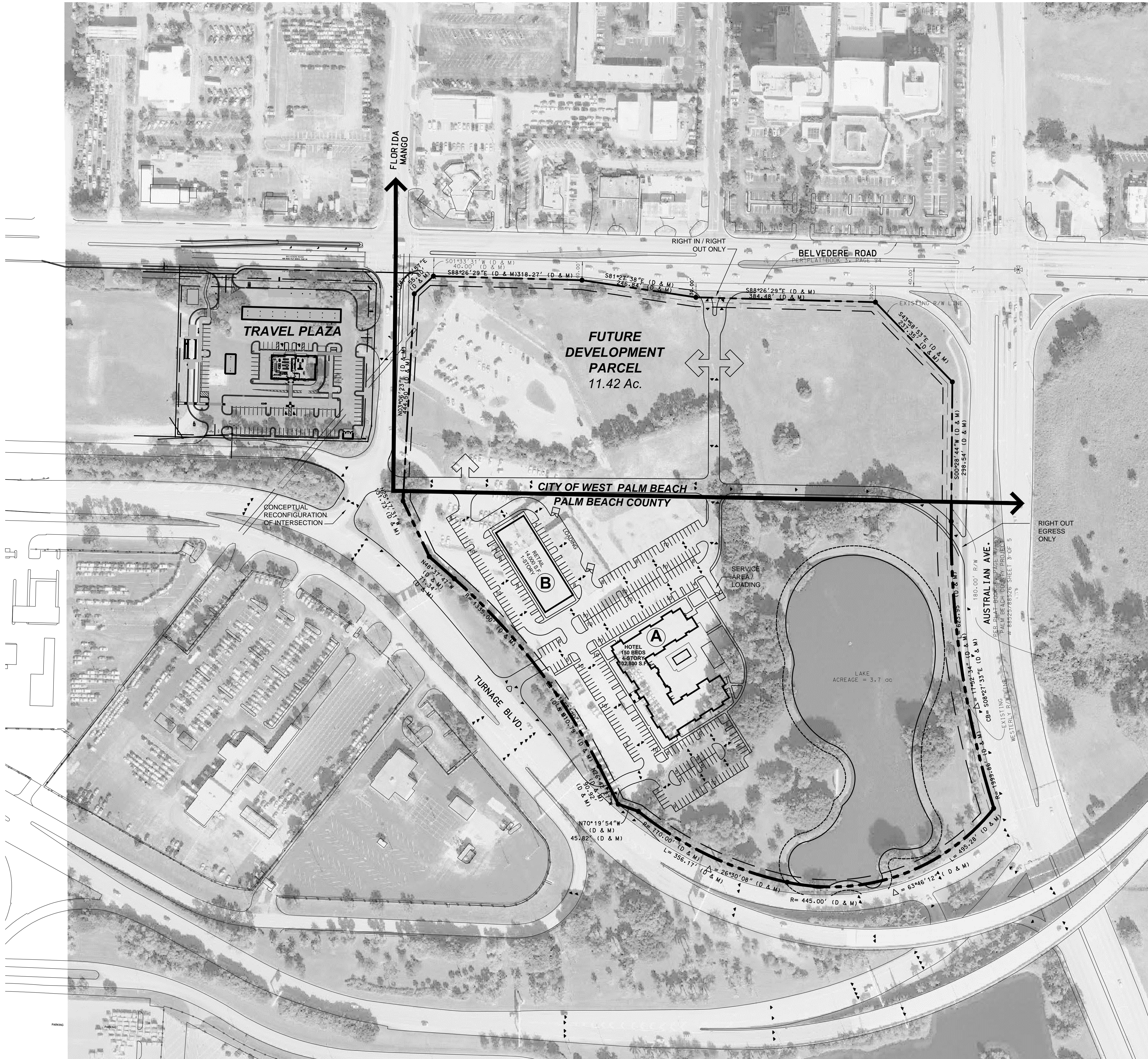
Date: Sept. 18, 2015
Project No.: 08-153.009
Designed By: HLC
Drawn By: HLC
Checked By: CW

Revision Dates:
10.21.15. Conceptual SP for RFP

CONCEPTUAL

THIS CONCEPTUAL SITE PLAN IS PROVIDED FOR
INFORMATION ONLY AND IS INTENDED TO CONVEY THE
DEVELOPMENT POTENTIAL FOR THE SITE. IT DOES
NOT REPRESENT A SPECIFIC PLAN OF DEVELOPMENT
INTENDED FOR THE PARCEL.

CSP-1



SITE DATA:

PALM BEACH COUNTY JURISDICTION

TOTAL ACREAGE 16.70 AC.
EXISTING ZONING PO - PUBLIC OWNERSHIP
EXISTING LAND USE U/T - UTILITY & TRANSPORTATION

ALLOWED USES IDENTIFIED IN PALM BEACH COUNTY
UNIFIED DEVELOPMENT CODE ART. 3.B.2.
AZO - AIRPORT ZONING OVERLAY TABLE 3.B.2.B.

CONCURRENCY APPROVAL FOR 260 ROOM HOTEL AND
200,000 SQUARE FEET OF OFFICE, OR EQUIVALENT.

Palm Beach County Parking Standards:

HOTEL 1.25 SP. / ROOM
RETAIL 1 SP. / 200 S.F.

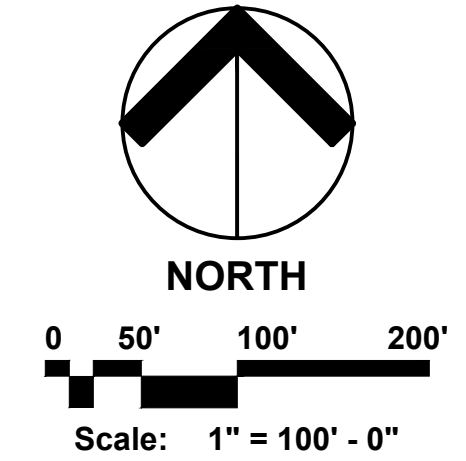


Urban Planning & Design
Landscape Architecture
Communication Graphics

610 Clematis Street
Suite CU02
West Palm Beach, FL 33401
561.366.1100 FAX 561.366.1111
www.udkstudios.com
#LCC000035

Copyright:
All ideas, designs, arrangements, and plans represented by this drawing are owned by and the property of the designer, and were created for the exclusive use of the specified project. These ideas, designs, arrangements or plans shall not be used by, or disclosed to any person, firm, or corporation without the written permission of the designer.

**PBC PBIA Airport
Parcel I SDA**
Palm Beach County, Florida
Conceptual Site Plan with Aerial



Date: Sept. 18, 2015
Project No.: 08-153.009
Designed By: HLC
Drawn By: HLC
Checked By: CW

Revision Dates:
10.21.15. Conceptual SP for RFP

CONCEPTUAL

THIS CONCEPTUAL SITE PLAN IS PROVIDED FOR INFORMATION ONLY AND IS INTENDED TO CONVEY THE DEVELOPMENT POTENTIAL FOR THE SITE. IT DOES NOT REPRESENT A SPECIFIC PLAN OF DEVELOPMENT INTENDED FOR THE PARCEL.

CSP-1

P.B.C.W.U.D. Lift Station Area 140

