

# ARTS & ENTERTAINMENT

*Some people like quiet museums filled with artifacts and high-end art. Some people like dancing in the aisles at concerts. Some people like laughing along with a hundred other people at the theater. All of these people like Bloomington, because there are opportunities to do all of these things and more, every night of the week.*

## MUSEUMS & HISTORIC SITES

### BLACK FILM CENTER/ARCHIVE

Since 1981, dedicated to preserving and promoting black film traditions. Appointments preferred. *Wells Library, Room 044*; 812-855-6041; [indiana.edu/~bfca](http://indiana.edu/~bfca)

### FARMER HOUSE MUSEUM

Historical museum seeking to preserve and interpret family life in Monroe County. 529 N. College Ave.; 812-336-5597; [farmerhousemuseum.wix.com/homepage](http://farmerhousemuseum.wix.com/homepage)

### GLENN A. BLACK LABORATORY OF ARCHAEOLOGY

Discovering and celebrating the people of Indiana's past. 423 N. Fess St.; 812-855-9544; [gbl.indiana.edu](http://gbl.indiana.edu)

### GRUNWALD GALLERY OF ART

Presenting contemporary art by student, faculty, and professional artists. *Studio Art Department; Henry Radford Hope School of Fine Art; 1201 E. 7th St.*; 812-855-8490; [indiana.edu/~grunwald](http://indiana.edu/~grunwald)

### HILLTOP GARDEN & NATURE CENTER

Tour the demonstration gardens for inspiration. 2367 E. 10th St.; 812-855-8808; [indiana.edu/~hilltop](http://indiana.edu/~hilltop)

### HINKLE-GARTON FARMSTEAD COMMUNITY HISTORIC SITE

Buildings, grounds, gardens, museum; 11 acres of history and community. 2920 E. 10th St.; 812-336-0909; [bloomingtonrestorations.org](http://bloomingtonrestorations.org)

### HOAGY CARMICHAEL ROOM

The room displays highlights from the archives' extensive Carmichael collection. *Archives of Traditional Music, Morrison Hall, Room 006*; 812-855-4679; [dlib.indiana.edu/collections/hoagy](http://dlib.indiana.edu/collections/hoagy)

### INDIANA GEOLOGICAL SURVEY (IGS)

Self-guided tours of Indiana's leading geologic research facility are available. 611 N. Walnut Grove Ave.; 812-855-7636; [igs.indiana.edu](http://igs.indiana.edu)

### IU ARCHIVES

The largest source on the history and culture of IU. *Inside the Herman B Wells Library, Room E460*; 812-855-1127; [libraries.iub.edu/archives](http://libraries.iub.edu/archives)



## INDIANA UNIVERSITY ART MUSEUM

Art from across the ages, for all ages, at the IU Art Museum. 1133 E. 7th St.; 812-855-5445; [artmuseum.iu.edu](http://artmuseum.iu.edu)

## THE KINSEY INSTITUTE FOR RESEARCH IN SEX, GENDER, AND REPRODUCTION

Visit the gallery to see exhibitions showcasing a unique collection! Morrison Hall, 1165 E. 3rd St., Room 313; 812-855-7686; [kinseyinstitute.org](http://kinseyinstitute.org)

## LILLY LIBRARY

IU's world-class rare books, manuscripts, and special collections library. 1200 E. 7th St.; 812-855-2452; [indiana.edu/~liblilly](http://indiana.edu/~liblilly)

## MATHERS MUSEUM OF WORLD CULTURES

Family-friendly exhibits and programs from around the world. 416 N. Indiana Ave.; 812-855-MUSE (6873); [mathers.indiana.edu](http://mathers.indiana.edu)



WYLIE HOUSE

## MONROE COUNTY HISTORY CENTER

Local history museum and research library "where the past and present meet." 202 E. 6th St.; 812-332-2517; [monroehistory.org](http://monroehistory.org)

## ROSE HILL CEMETERY

The historic Rose Hill Cemetery was established around 1820. 930 W. 4th St.; 812-349-3498; [bloomington.in.gov/parks](http://bloomington.in.gov/parks)

## WONDERLAB

Award-winning science fun, gift shop, and garden. Also available for private events. 308 W. 4th St.; 812-337-1337; [wonderlab.org](http://wonderlab.org)

## WYLIE HOUSE MUSEUM

Historic 1835 home of the first president of Indiana University. 307 E. 2nd St.; 812-855-6224; [libraries.indiana.edu/wylie-house-museum](http://libraries.indiana.edu/wylie-house-museum)

# ART • SCIENCE • HISTORY • SEX



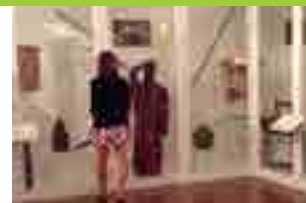
IU ART MUSEUM



MONROE CO. HISTORY CENTER



WYLIE HOUSE MUSEUM



MATHERS MUSEUM

# BLOOMINGTON MUSEUMS

WE HAVE WHAT INTERESTS YOU.



GLENN BLACK LABORATORY



THE KINSEY INSTITUTE



IU ARCHIVES



GRUNWALD GALLERY OF ART

Some museums  
have specialty  
gift shops!

For more information about these & other museums in  
Bloomington please go to [visitbloomington.com/museums](http://visitbloomington.com/museums)

Tag your  
photos with  
[#btownmuseums](https://twitter.com/btownmuseums)



**ART. MUSIC. FOOD.  
BLOOMINGTON.**






**BEAD**  
BLOOMINGTON  
ENTERTAINMENT  
& ARTS DISTRICT

visit**bead**.com

**By Hand  
Gallery**

812.334.3353

WEDNESDAY - SATURDAY 11:00AM - 1:00PM



021 W WOOD AVE SUITE 100  
BLOOMINGTON, IN

LOCATED OFF THE COURTHOUSE SQUARE  
THREE FOURTEEN SQUARE ST. RD.

WWW.BYHANDGALLERY.COM

**CARDINAL  
STAGE COMPANY**

**Bloomington's  
Premier Theater Company**

Offering live performances  
in the heart of downtown  
Bloomington.



Tickets & Info  
cardinalstage.org  
813.336.9300

# CULTURAL RESOURCES

.....

## ASIAN CULTURE CENTER

The Asian Culture Center is a place where you can study, get involved, and find support. 807 E. 10th St.; 812-856-5361; [indiana.edu/~acc](http://indiana.edu/~acc)

## EL CENTRO COMUNAL LATINO (LATINO COMMUNITY CENTER)

Providing resources and an accessible and safe place for all Latinos. 303 E. Kirkwood Ave., Room 200, in the Monroe County Library; 812-355-7513; [elcentrocomunal.com](http://elcentrocomunal.com)

## FIRST NATIONS EDUCATION & CULTURAL CENTER

Building community, academic achievement, and cultural preservation. All backgrounds welcome! Weatherly Hall, 712 E. 8th St., Room 203; 812-855-4814; [indiana.edu/~fnecc](http://indiana.edu/~fnecc)

## BUDDHIST MONASTERIES

Buddhist monasteries with many religious, cultural, and educational programs. Visitors welcome! Dagom Gaden Tensung Ling Monastery: 102 Clubhouse Dr. (next to Lower Cascades Park); 812-339-0857; [dgtlmonastery.org](http://dgtlmonastery.org)  
Gaden KhachoeShing Monastery: 2150 E. Dolan Rd.; 812-334-3456; [ganden.org](http://ganden.org)

## GLBT STUDENT SUPPORT SERVICES

Providing information and support on a host of GLBT issues. 705 E. 7th St.; 812-855-4252; [gibt.indiana.edu](http://gibt.indiana.edu)

## HELENE G. SIMON HILLEL CENTER

Center for Jewish life and "home away from home" for IU students. 730 E. Third St.; 812-336-3824; [ihillel.org](http://ihillel.org)

## LA CASA LATINO CULTURAL CENTER

Provides academic, personal, and cultural support through services and programs. 715 E. 7th St.; 812-855-0174; [indiana.edu/~lacasa](http://indiana.edu/~lacasa)



NEAL-MARSHALL BLACK CULTURE CENTER

## NEAL-MARSHALL BLACK CULTURE CENTER

Connecting IU to black culture and supporting recruitment and retention of black students. 275 N. Jordan Ave.; 812-855-9271; [nmbcc.indiana.edu](http://nmbcc.indiana.edu)

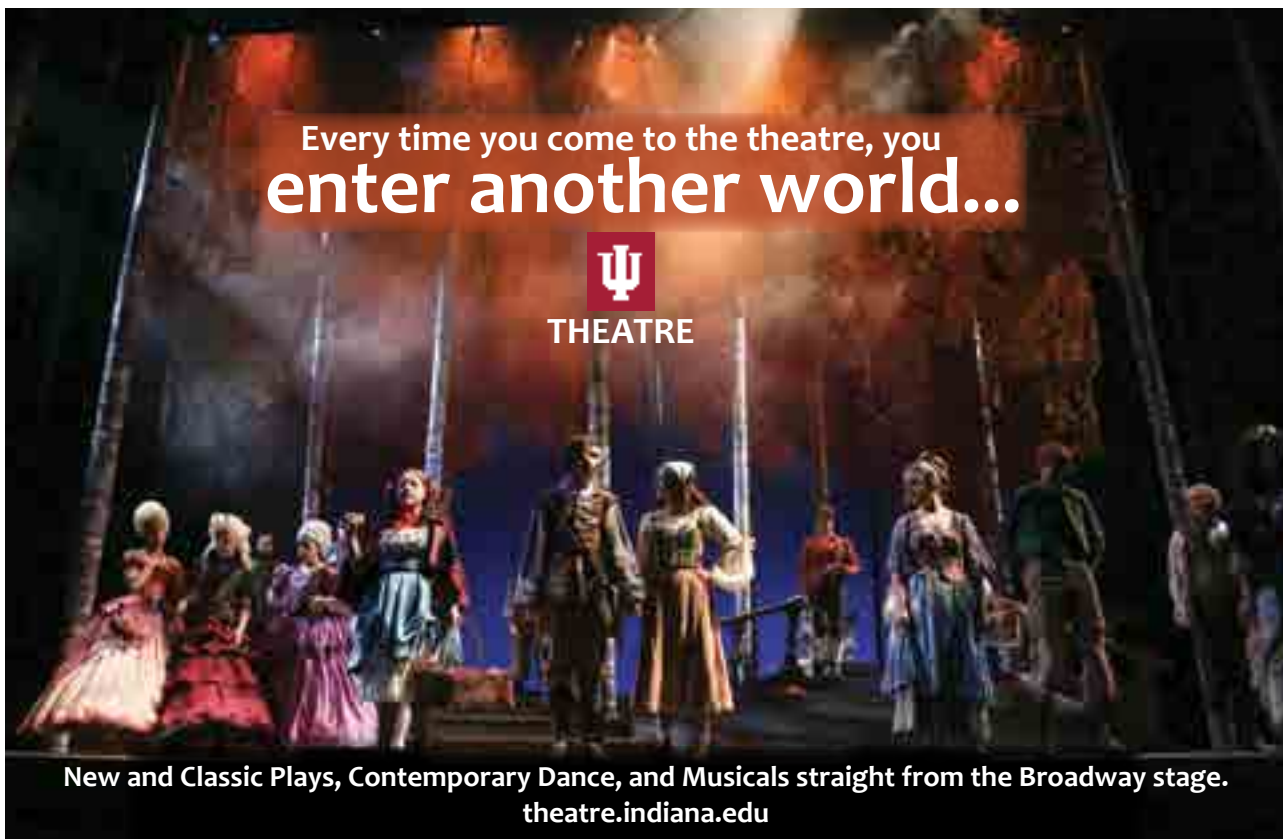
## TIBETAN MONGOLIAN BUDDHIST CULTURAL CENTER

Visitors are welcome to tour the grounds and join in Buddhist teachings. 3655 S. Snoddy Rd.; 812-336-6807; [tmbcc.org](http://tmbcc.org)

Every time you come to the theatre, you  
**enter another world...**



**THEATRE**



New and Classic Plays, Contemporary Dance, and Musicals straight from the Broadway stage.  
[theatre.indiana.edu](http://theatre.indiana.edu)



IVY TECH JOHN WALDRON ARTS CENTER

## ART GALLERIES

.....

### **BLOOMINGTON/MONROE COUNTY CONVENTION CENTER**

This exciting gallery space features the work of artists from Monroe County. 302 S. College Ave.; 812-336-3681; [bloomingtonconvention.com](http://bloomingtonconvention.com)

### **BLUELINE CREATIVE CO-OP & GALLERY**

Showcase for artistic pieces by new and established artists from Bloomington and around the world. 212 W. 4th St.; 812-589-7377; [bluelinestyle.com](http://bluelinestyle.com)

### **BY HAND GALLERY**

Showcasing local and regional fine art and crafts for over 35 years. 101 W. Kirkwood Ave., Suite 109; 812-334-3255; [byhandgallery.com](http://byhandgallery.com)

### **GALLERY406**

Be transformed by traditional to contemporary photography and fine art. Online shopping available. 116 W. 6th St., Suite 110; 812-333-0536; [gallery406.com](http://gallery406.com)

### **IVY TECH JOHN WALDRON ARTS CENTER**

Five contemporary art galleries in a historic Beaux Arts setting. New art every month. 122 S. Walnut St.; 812-330-4400; [ivytech.edu/waldron](http://ivytech.edu/waldron)

### **PICTURA GALLERY**

A fine art photography gallery selling works from contemporary artists. 122 W. 6th St.; 812-336-0000; [picturagallery.com](http://picturagallery.com)

### **ROYALE HAIR PARLOR**

An alternative gallery space for local and regional artists. 116 W. 6th St.; 812-360-1860; [royalehairparlor.com](http://royalehairparlor.com)

### **THE VAULT**

#### **AT GALLERY MORTGAGE**

Showing only local artists. Supporting only local charity. 121 E. 6th St.; 812-334-9700; [gallerymortgage.com](http://gallerymortgage.com)

### **THE VENUE FINE ARTS & GIFTS**

Bringing you the best in local and national fine art and gifts. 114 S. Grant St.; 812-339-4200; [thevenuebloomington.com](http://thevenuebloomington.com)

## PERFORMANCE ART

.....

### **AFRICAN AMERICAN ARTS INSTITUTE**

Preserving African American culture through artistic expression. Neal-Marshall Black Culture Center, 275 N. Jordan Ave., Suite 310; 812-855-9501; [indiana.edu/~aaai](http://indiana.edu/~aaai)

### **BLOOMINGTON PLAYWRIGHTS PROJECT**

The only professional theatre in Indiana dedicated to new plays. 107 W. 9th St.; 812-334-1188; [newplays.org](http://newplays.org)

### **BUSKIRK-CHUMLEY THEATER**

Enjoy theatre, music, film, and dance in a historic theater. 114 E. Kirkwood Ave.; 812-323-3020; [buskirkchumley.org](http://buskirkchumley.org)

### **CARDINAL STAGE COMPANY**

South Central Indiana's premier live theatre company. 900 S. Walnut St. Info: 812-336-7110; Tickets: 812-336-9300; [cardinalstage.org](http://cardinalstage.org)



"WHAT YOU SEE HERE  
YOU CAN'T SEE **ANYWHERE ELSE**  
**IN THE WORLD.**"  
- Bloom Magazine



WWW.NEWPLAYS.ORG

**THE COMEDY ATTIC**  
CORNER OF 4TH & WALNUT  
NO HECKLING



**GALLERY**  
downtown  
bloomington **WALK**

# GUIDE TO THE GALLERIES

Ten downtown galleries invite you to stroll our Downtown Gallery Walk all year! Mark your calendars for the First Friday of every month, when galleries will host special exhibits, serve refreshments, and have extended hours, from 5-8 pm.

## FULL MEMBER GALLERIES

**BLUELINE CREATIVE  
CO-OP AND GALLERY**  
212 W. 4th St., 812-589-7377  
MON-FRI 10-5  
[www.bluelinestyle.com](http://www.bluelinestyle.com)

**GATHER**  
101 W. Kirkwood Ave.  
Suite 112, inside Fountain Square  
Mall, 812-785-1480  
WED-FRI 12-5, SAT 10-5, SUN 12-4  
[www.gathershoppe.com](http://www.gathershoppe.com)

**BY HAND GALLERY**  
101 W. Kirkwood Ave.,  
Suite 109, inside Fountain Square  
Mall, 812-334-3255  
MON-SAT 10-5:30  
[www.byhandgallery.com](http://www.byhandgallery.com)

**IVY TECH JOHN  
WALDRON ARTS CENTER**  
122 S. Walnut St., 812-330-4400  
MON-FRI 9-7, SAT 9-5  
[www.ivytech.edu/waldron](http://www.ivytech.edu/waldron)

**GALLERY406**  
116 W. Sixth St., Suite 110, inside  
Wick's Building, 812-333-0536  
MON-FRI 9-6, SAT by apt.  
[www.gallery406.com](http://www.gallery406.com)

**PICTURA GALLERY**  
122 W. 6th St., 812-336-0000  
TUES-SAT 11-7  
[www.picturagallery.com](http://www.picturagallery.com)

**AUXILIARY GALLERIES**  
**BLOOMINGTON/MONROE  
COUNTY CONVENTION CENTER**  
302 S. College Ave., 812-336-3681  
MON-SUN 8-6  
[www.Bloomingtonconvention.com](http://www.Bloomingtonconvention.com)

**THE VENUE FINE  
ARTS & GIFTS**  
114 S. Grant St., 812-339-4200  
TUES-SAT 11-7, SUN 12-5  
[www.thevenuebloomington.com](http://www.thevenuebloomington.com)

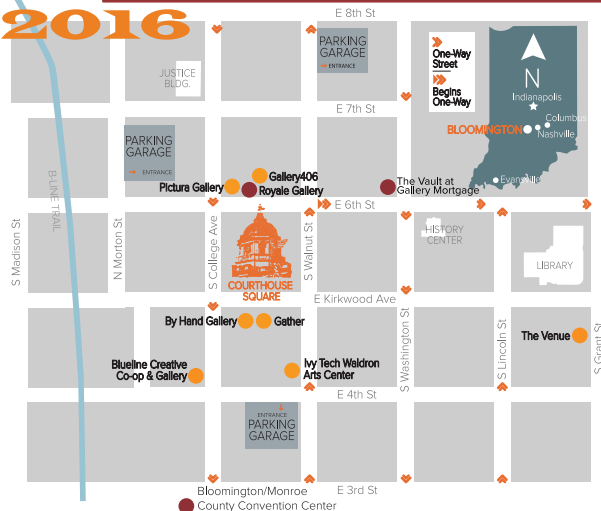
**ROYALE HAIR PARLOR**  
116 W. 6th St., 812-606-7331  
MON 11-4, TUES-FRI 11-7, SAT 11-4  
[www.royalehairparlor.com](http://www.royalehairparlor.com)

**THE VAULT AT GALLERY  
MORTGAGE**  
121 E. 6th St., 812-334-9700  
MON-FRI 9-5  
[www.gallerymortgage.com](http://www.gallerymortgage.com)

**BEAD** **down**town  
For more NEWS, DOWNLOADABLE  
MAPS AND BROCHURE & INFO visit:  
[gallerywalkbloomington.com](http://gallerywalkbloomington.com)



**2016**



## THE COMEDY ATTIC

You can't prove we aren't the best comedy club ever. 123 S. Walnut St.; 812-336-5233; [comedyattic.com](http://comedyattic.com)

## IU AUDITORIUM

Bloomington's venue for world-class artists, entertainers, Broadway performances, and more. 1211 E. 7th St.; 812-855-1103; [iuauditorium.com](http://iuauditorium.com)

## IU CINEMA

World-class cinema with arthouse repertory and guest filmmaker programming. 1213 E. 7th St.; 812-855-CINE; [cinema.indiana.edu](http://cinema.indiana.edu)

## IU JACOBS SCHOOL OF MUSIC

Concerts, ballets, and operas by one of the nation's best music schools. Musical Arts Center: 101 N. Jordan Ave.; Simon Music Center: 200 N. Jordan Ave.; 812-855-9846; [music.indiana.edu](http://music.indiana.edu)

## IU THEATRE

Classic and contemporary theatre productions featuring student actors and designers. Lee Norvelle Theatre and Drama Center, 275 N. Jordan Ave.; 812-855-5382; [theatre.indiana.edu](http://theatre.indiana.edu)

## IVY TECH JOHN WALDRON ARTS CENTER

Two black box theaters featuring traditional performances and experimental works. 122 S. Walnut St.; 812-330-4400; [ivytech.edu/waldron](http://ivytech.edu/waldron)

## SUMMER PERFORMING ARTS SERIES

Enjoy Bloomington's finest talent brought to you by the Bloomington Parks and Recreation Department! The series runs from May through September (weather permitting). Call the Community Events Hotline for current schedules and updates at 812-349-3754.  
Tuesday Lunch Concerts: Peoples Park, 501 E. Kirkwood Ave.;  
Friday Concerts in the Park: Waldron, Hill & Buskirk Park, 331 S. Washington St.;  
Sunday Concerts in the Park: Bryan Park, 1100 S. Woodlawn Ave.  
[bloomington.in.gov/parks](http://bloomington.in.gov/parks)

## TOURS

### BLOOMINGTOURS

This great town, then and now. Guided walks and more. Downtown Bloomington; 812-340-2501; [bloomingtours.com](http://bloomingtours.com)

### BLOOMINGTON INSIDERS

Tour Bloomington. It's comedy, history, mystery, and accidentally educational. For reservations; 812-322-2211; [misguideme.com](http://misguideme.com)

JAZZ ENSEMBLE AT IU JACOBS SCHOOL OF MUSIC



**Three Cities.  
Two Lanes.  
One Great Time.**

INDIANA  
**ArtsRoad46**  
BLOOMINGTON  
BROWN COUNTY  
COLUMBUS

LEARN MORE AT:  
[visitbloomington.com/artsroad](http://visitbloomington.com/artsroad)

**BUSKIRK-CHUMLEY THEATER**  
114 East Kirkwood Avenue  
(812) 323-3020  
[buskirkchumley.org](http://buskirkchumley.org)

*Music  
Theater  
Dance  
Film*

**THE  
INDIANA UNIVERSITY  
CINEMA**

**... A PLACE FOR FILM™**  
[cinema.indiana.edu](http://cinema.indiana.edu)

**PLAY**

**LEARN**

**MAKE MEMORIES**

[wonderlab.org](http://wonderlab.org)  
812.337.1337

**WONDERLAB**  
THE MUSEUM OF SCIENCE  
HEALTH AND TECHNOLOGY

**BEAD**  
BLOOMINGTON EDUCATION AND CULTURAL CENTER