

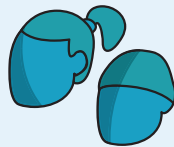
APPROPRIATE SWIMWEAR

Please adhere to the below.

Appropriate swimwear must be worn at all times during swimming lessons:



Adults and young children



Swim hat or hair tied up



Swimming Trunks, speedos or swim shorts



Swimming costumes



Knee and elbow length suits



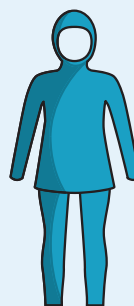
Swim nappies



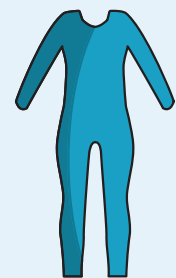
Close fitting long and short sleeved tops



Close fitting lycra leggings



Burkini



Wetsuit-style

Please speak to a member of staff if you have any questions.

BETTER