

Tuba in Eb (BC)

# Norge i rødt, hvitt og blått

Lars-Erik Larsson  
Arr.: Petter S. Kragstad

**Moderato** ♩ = ca. 108

5

4

1-4

*sfp*

 $\overline{sfp}$ 

13

*cresc. poco a poco*

19 rall.

## A tempo

21

$$\sum_{ff}$$
 $mf$ 

24

28

30

 $\bar{f}$  $mf$ 

33

 $f$ 

***mf***

38

3

---

38–40

41 42

46

50

53

57

62

66

70

75

79

83

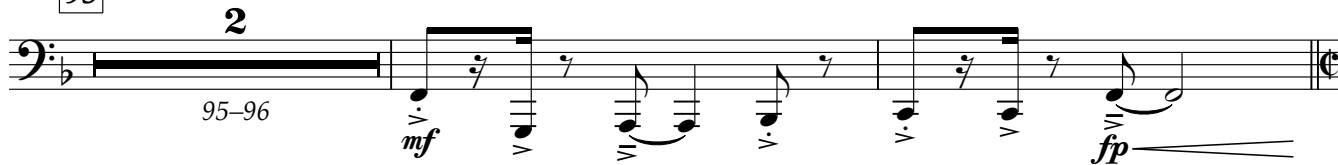
83-86

Detailed description: This page contains musical notation for a Tuba in Eb part. It features ten staves of music in bass clef with a key signature of one flat (Bb). The notation includes various note values (quarter, eighth, sixteenth notes), rests, and dynamic markings such as *mf* (mezzo-forte), *f* (forte), and *fp* (fortissimo). There are also articulation marks like accents and slurs. Measure numbers are indicated at the start of each staff, and some staves have boxed numbers (42, 50, 57, 62, 70, 75, 83) and rehearsal marks (3, 4) with corresponding measure ranges (70-72, 83-86).

90



95

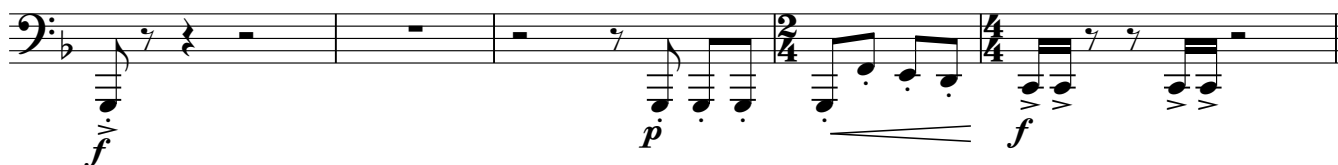


♩ = ♩ (shuffle 8's)

♩ = ♩ (straight 8's)



105



110



114



118



126

rit.



130 Molto pesante (Firebird)

