

Tuba 1|

F clef in Bb

# Symphony nr.1 for wind band

## Solitude Standing

### I

Stig Nordhagen  
rev.2017

$\text{♩} = 72$

Harmon mute  
Tpt.1

4

7 **1**

4 5 Euph.

20 **2** **3**

$pp < mf$   $pp < mp$   $mp > pp$

30 **3**

$mp > p$

40 **4**

2

$p$

51 **5** accel.  $\text{♩} = 146$

2 7

$mp$

65 **6**

4

$p$

72

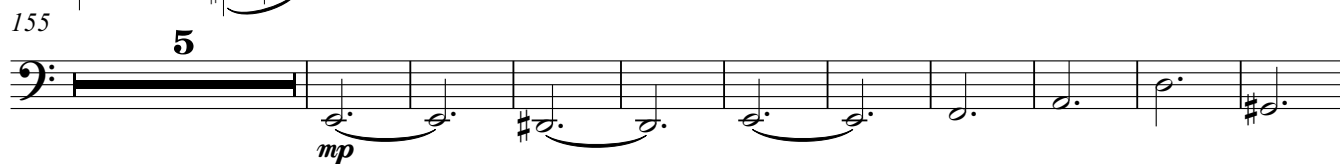
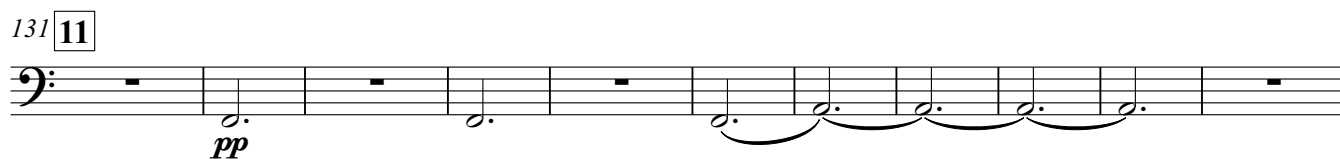
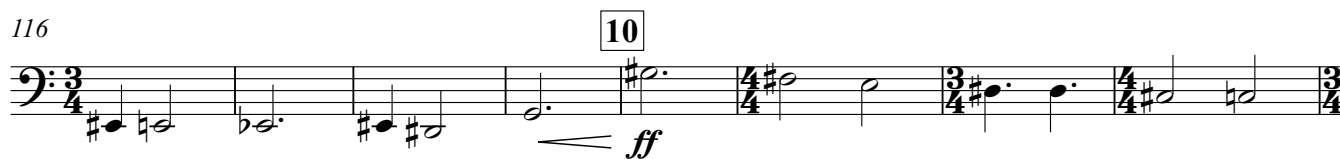
79 **7**

4

2

Tuba 1|

*Scherzando*



190



196 Lunga

muted

$\text{♩} = 52$



207



225 **Open**  
rit.

**15** A tempo



234



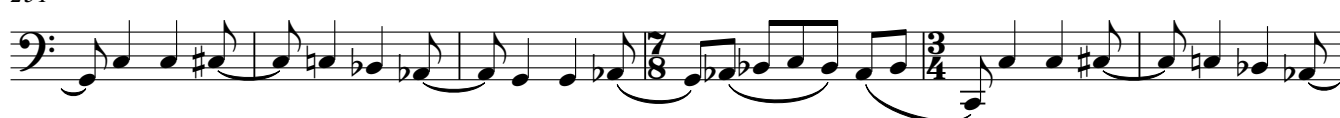
poco rall.. A tempo

243 **16**

**17**



251



257 **18**



260

rit.



265

$\text{♩} = 42$

quasi cadenza



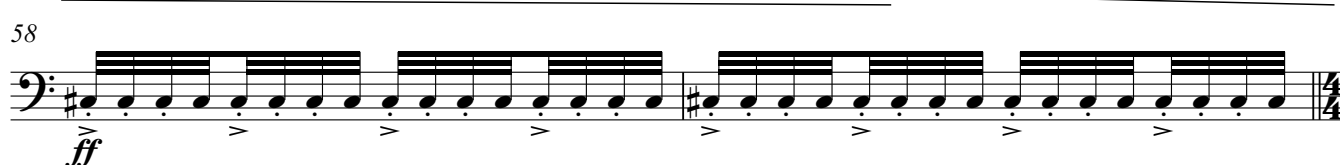
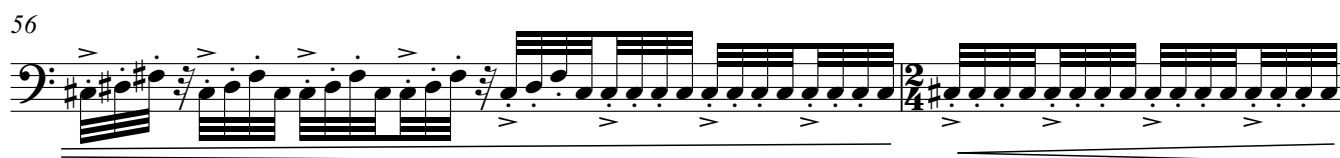
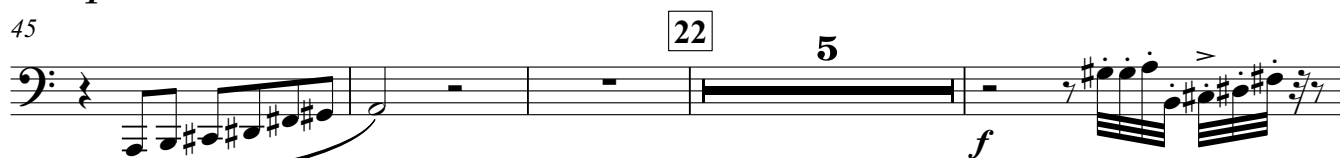
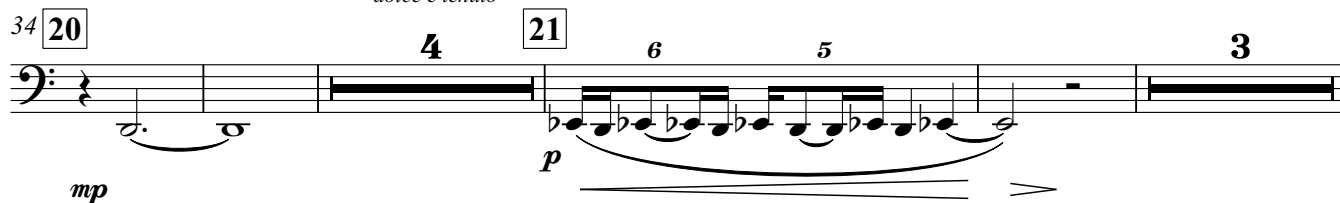
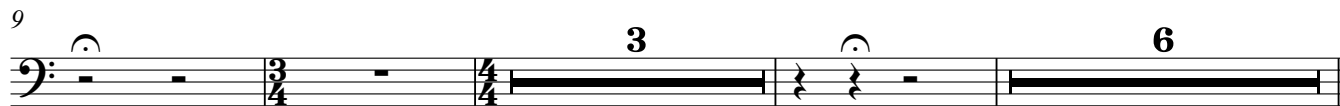
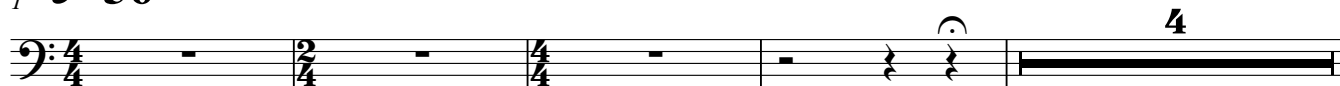
269

Ten. Sax.

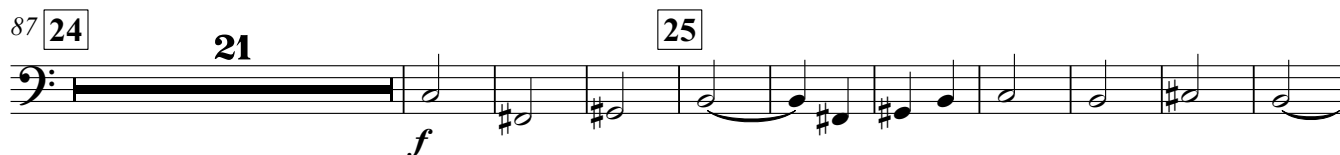


## II

1  $\text{♩} = 56$



60  $\text{♩} = 120$



118



130 **26** *Molto sonoro*



139



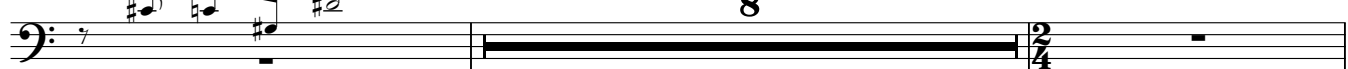
144



149 **28**



159 **29** Tbn.1



169 **30**



199



207



215



223



6

Tuba 1|

229 32 pesante

*ff* *f*

234

237 *cresc.* *ff*

242 33 8 2

*pp*

256

263 34

270

276

281 35

288

295 36 *Molto sonoro*

*f cresc. al fine*

302



309 37

poco accel. - - - -



314 **A tempo** (♩=120)  
con tutta forza

