



NATIONAL CYBER SUMMIT

June 4-6, 2019 | Huntsville, AL

Faster than the Speed of Threat:
Edge-to-Edge Cybersecurity



NATIONAL CYBER SUMMIT

June 4-6, 2019 | Huntsville, AL

Faster than the Speed of Threat:
Edge-to-Edge Cybersecurity

HONDA
The Power of Dreams



Plant Floor Cybersecurity Challenges

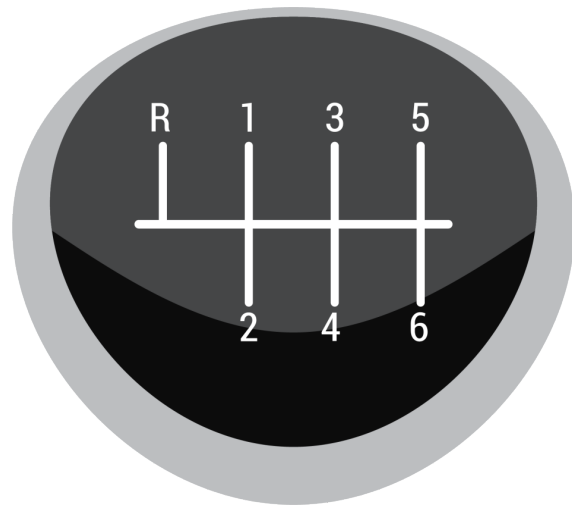


NATIONAL CYBER SUMMIT

June 4-6, 2019 | Huntsville, AL

Faster than the Speed of Threat:
Edge-to-Edge Cybersecurity

HONDA
Honda Manufacturing of Alabama



SHIFTING GEARS

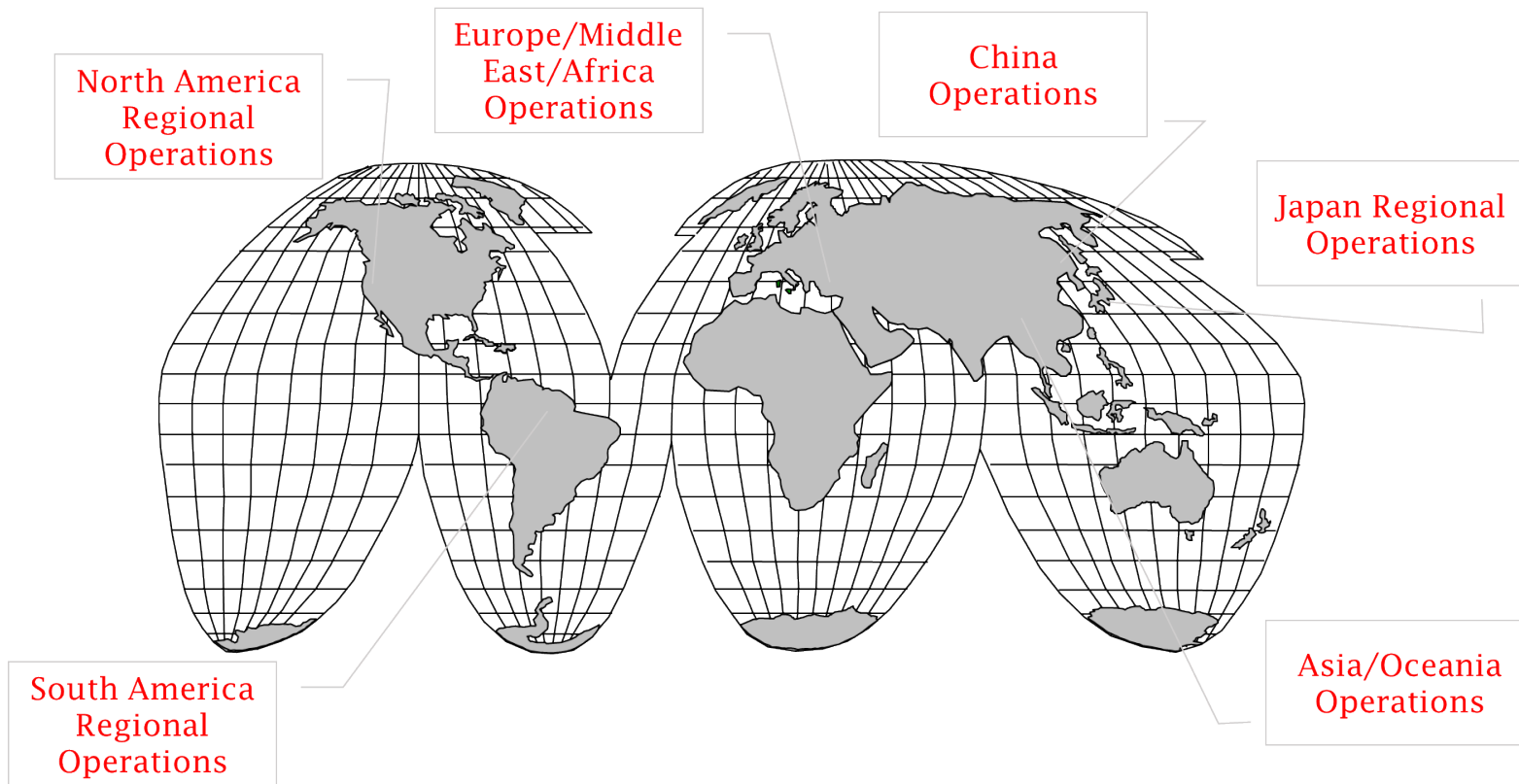
- About Honda
- The plant floor environment
- Roadmap
- Challenges



NATIONAL CYBER SUMMIT

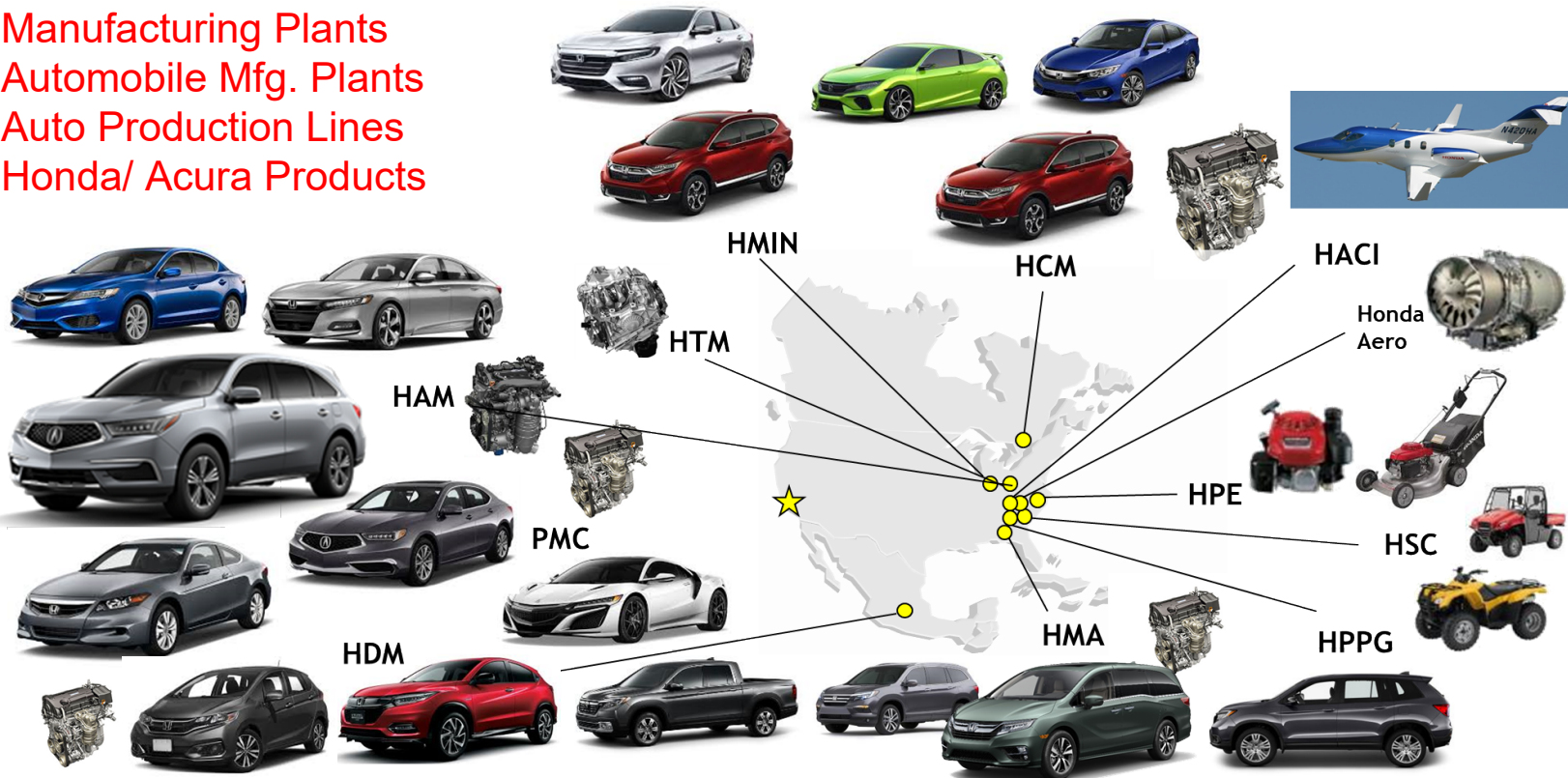
June 4-6, 2019 | Huntsville, AL

Faster than the Speed of Threat:
Edge-to-Edge Cybersecurity



Honda North American Operations

- 13 Manufacturing Plants
- 5 Automobile Mfg. Plants
- 11 Auto Production Lines
- 19 Honda/ Acura Products



Honda – not just an auto manufacturer

- Tillers
- Lawn mowers
- Robotic lawn mowers
- Riding mowers
- Trimmers
- Blowers
- Sprayers
- Motorcycles
- Hedge trimmers
- Snow throwers
- Generators
- Engines
- Pumps
- Outboard engines
- Inflatable boats
- Electric 4-wheel scooters
- Locks
- Robots



Honda Global is the largest manufacturer of internal combustion engines in the world!



NATIONAL CYBER SUMMIT

June 4-6, 2019 | Huntsville, AL

Faster than the Speed of Threat:
Edge-to-Edge Cybersecurity

LOCATION | Lincoln, Alabama (approximately 40 miles east of Birmingham in Talladega County)

STARTED PRODUCTION | November 14, 2001

PLANT SIZE | 4.2 million square feet

SITE SIZE | 1,350 acres **ASSOCIATES** | more than 4,500

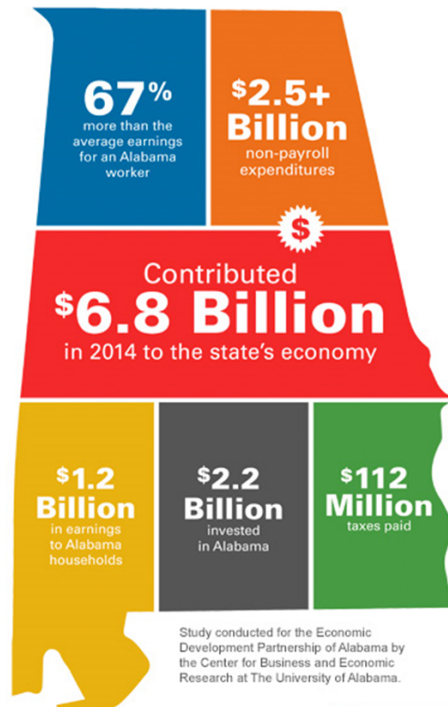
CAPITAL INVESTMENT | \$2.6 billion

MODELS IN PRODUCTION | Honda Odyssey, Pilot, Ridgeline and V-6 engines

ANNUAL PRODUCTION CAPACITY | 340,000 vehicles and V-6 engines

OPERATIONS PERFORMED | Steel and aluminum blanking, stamping, welding, painting, plastic injection molding, aluminum casting, aluminum machining, ferrous machining, vehicle sub-assembly and assembly, engine assembly, vehicle testing and quality assurance

COMMUNITY PARTNERS | Honda has given more than \$11 million to Alabama charities and nonprofit organizations



Study conducted for the Economic Development Partnership of Alabama by the Center for Business and Economic Research at The University of Alabama.

Honda Manufacturing of Alabama
ECONOMIC IMPACT

HONDA
Honda Manufacturing of Alabama

Challenges

- People
- Production Requirements





NATIONAL CYBER SUMMIT

June 4-6, 2019 | Huntsville, AL

Faster than the Speed of Threat:
Edge-to-Edge Cybersecurity

Honda Manufacturing of Alabama



- HMA is a vertically integrated manufacturing plant.
- Operations performed on-site:
 - Steel and aluminum blanking and stamping, welding, painting, plastic injection molding, aluminum casting, aluminum and ferrous machining, engine assembly, vehicle assembly, testing and quality assurance.



Flexible Manufacturing



Line 2



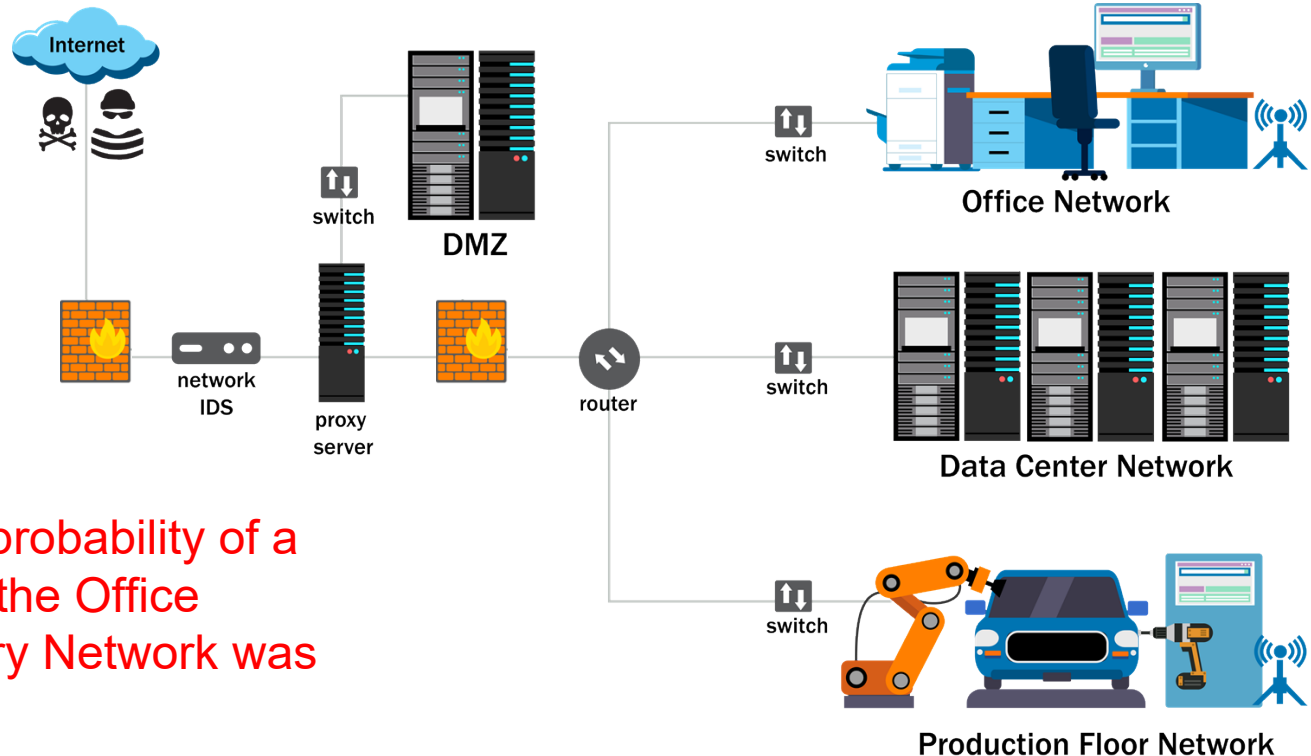
Line 1



Engine



Current Honda Alabama Network



Key Point:

In the past....
we believed that the probability of a
virus spreading from the Office
Network to the Factory Network was
low...



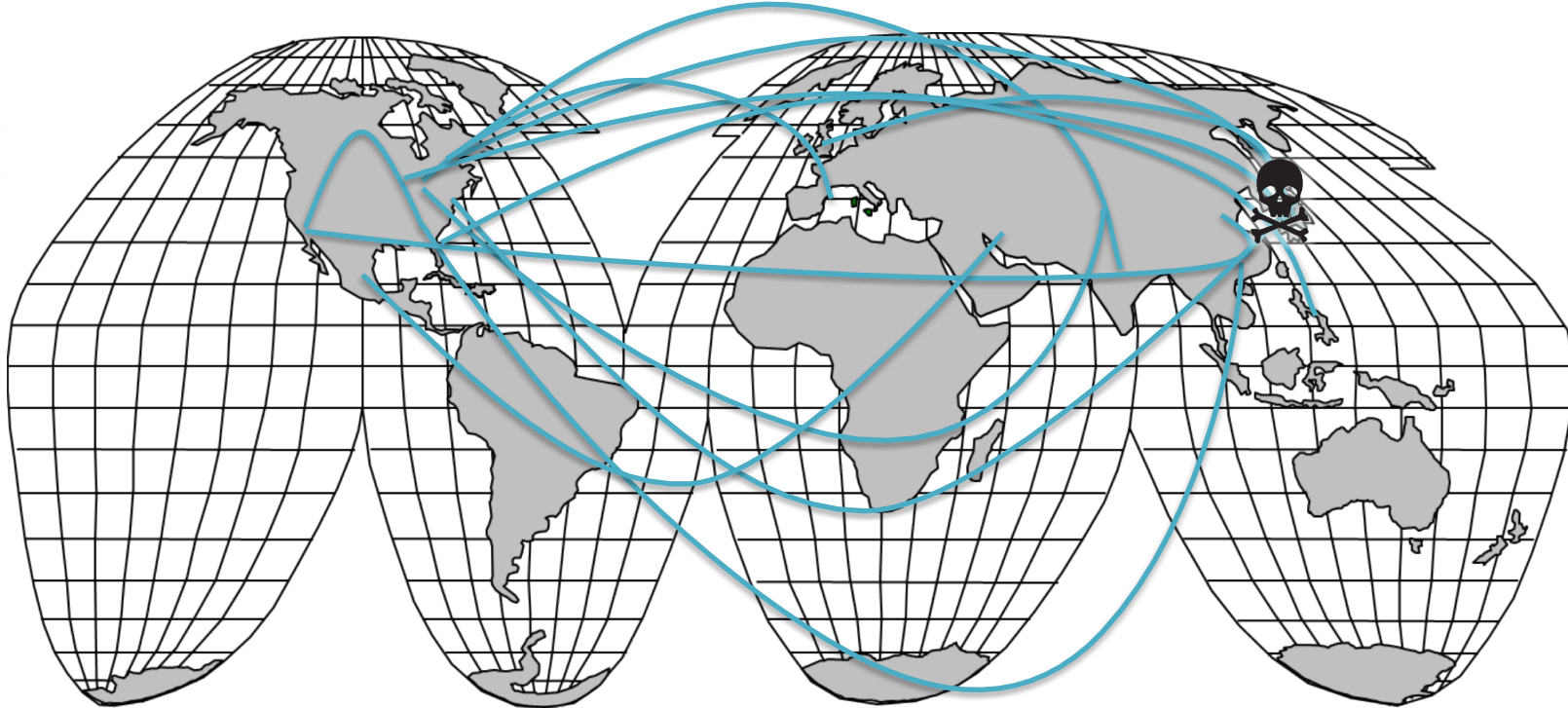
NATIONAL CYBER SUMMIT

June 4-6, 2019 | Huntsville, AL

Faster than the Speed of Threat:
Edge-to-Edge Cybersecurity

Challenges

- Flat Network
- Functionality





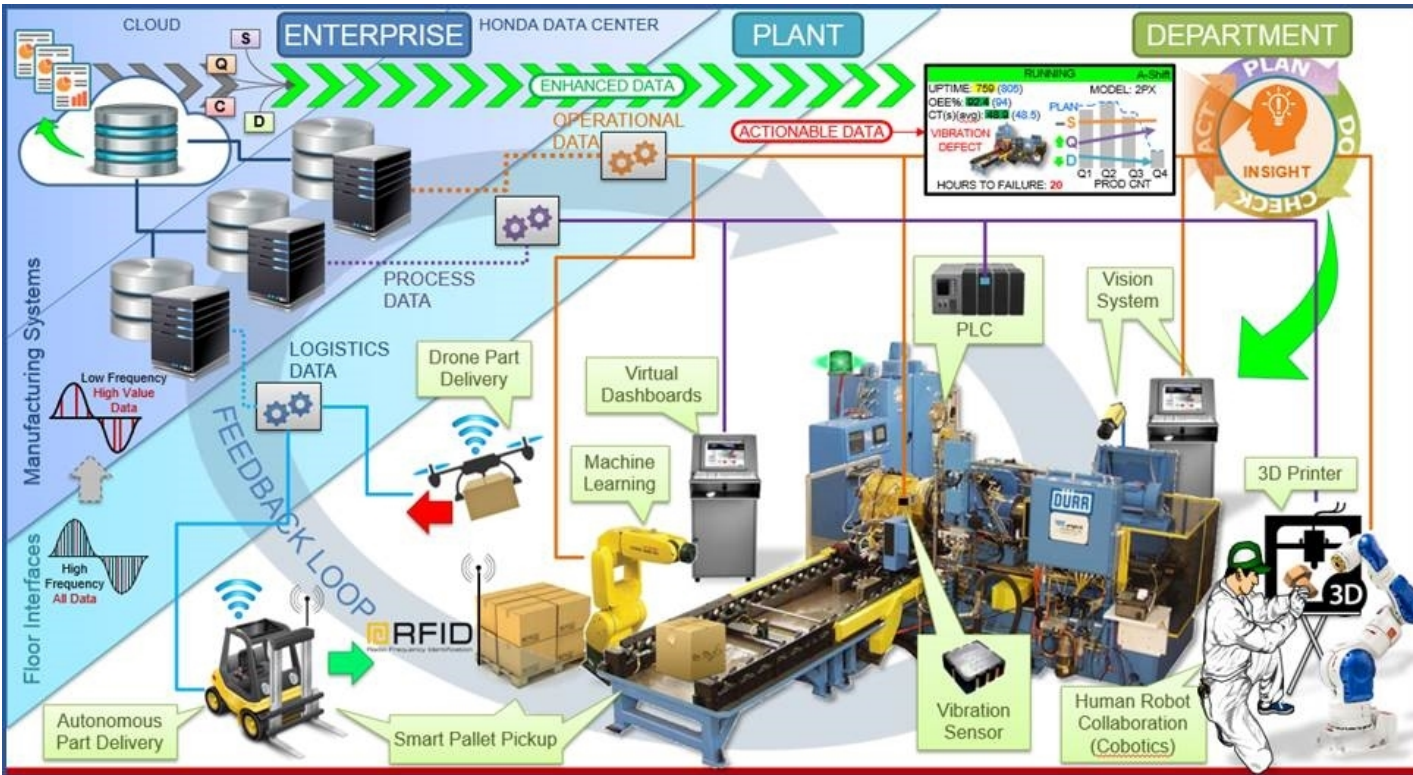
NATIONAL CYBER SUMMIT

June 4-6, 2019 | Huntsville, AL

Faster than the Speed of Threat:
Edge-to-Edge Cybersecurity

Challenges

- Operational Technology (OT)
- IoT
- Cloud
- Safety





NATIONAL CYBER SUMMIT

June 4-6, 2019 | Huntsville, AL

Faster than the Speed of Threat:
Edge-to-Edge Cybersecurity

- Plant Floor PCs - **273** (OS: Win XP, Win 7 and Win 10)
- Thin Clients - **789**
- Windows Embedded Devices - **636**
- HMIs (Human Machine Interface) - **547**
- Conveyor Systems - **300+**
- Robots - **900+**
- PLCs - **1800+**
- IoT (Internet of Things) - **4500+**

Challenges

- Age of equipment – New to 25 years old.
- Size and Complexity of manufacturing processes
- Devices that cannot be managed by IT.
- Patch management.
- Locating devices over a 4.2 million sqft plant.
- NAC in a production environment



Roadmap

	Base Expectations	Next Steps	Advanced	
Enhance Detection and Minimize Impact	<ul style="list-style-type: none"> Asset Discovery Installation of AV software to all devices Inter-company/office network communication management 	<p>Manufacturing offices ・ Major companies/offices</p> <ul style="list-style-type: none"> Internal company/office network communication management 	<p>All companies/offices</p>	
Comprehensive Security Measures	<ul style="list-style-type: none"> Establish security information collection Establish method for application of security patches 	<p>Devices managed by IT department</p> <ul style="list-style-type: none"> Application of security patches and control risk for not applying patches Network connection restriction (pre-registration) <ul style="list-style-type: none"> Implement log management/device control software 	<p>Devices managed by user department</p>	
Establish Self-standing Security Activities	<ul style="list-style-type: none"> Establish security training formation Establish support formation by IT 	<p>Effective security measures through support of IT department</p> <ul style="list-style-type: none"> Conduct user department training Provide planning support tools/self-checking list and support 	<p>Security management activities by user departments</p> <ul style="list-style-type: none"> Start PDCA activities 	<ul style="list-style-type: none"> Establish PDCA activities
	2017	2018	2019	2020



NATIONAL CYBER SUMMIT

June 4-6, 2019 | Huntsville, AL

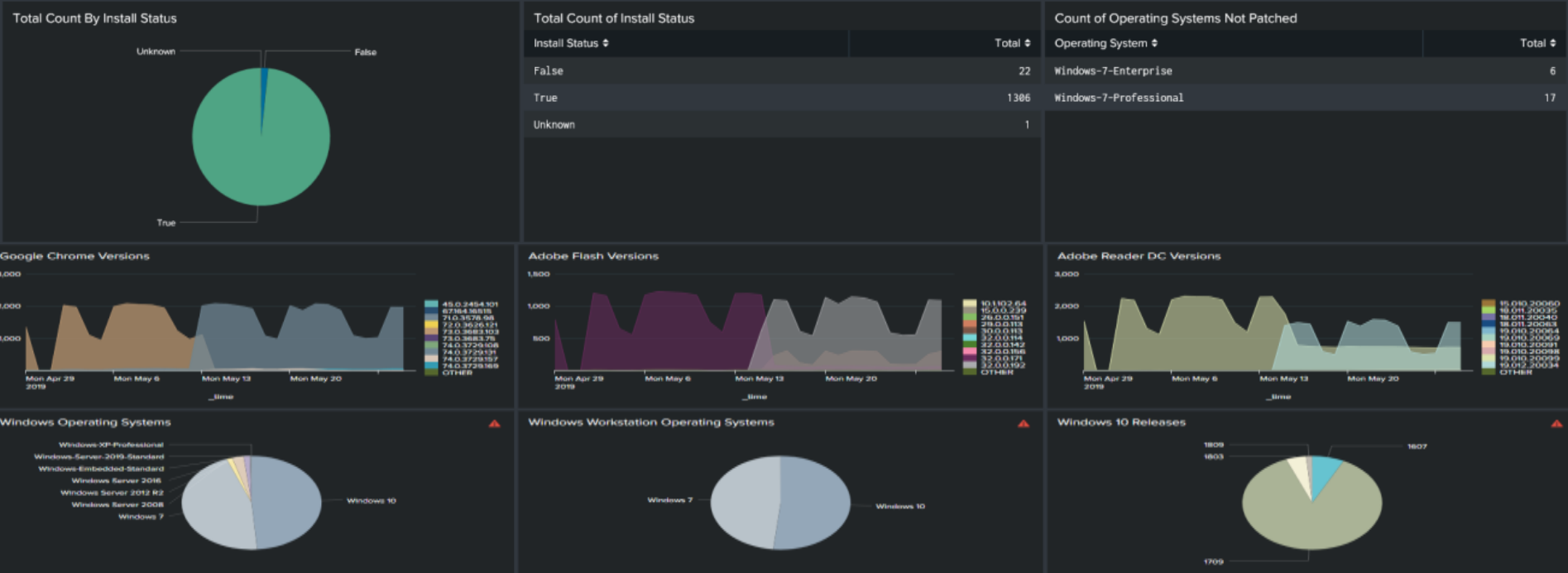
Faster than the Speed of Threat:
Edge-to-Edge Cybersecurity

HONDA
Honda Manufacturing of Alabama

Challenges

- People
- Operational Technology (OT)
- Remote Access
- IoT
- Legacy Systems
- Size and Complexity of network and manufacturing processes
- Visibility
- Production Requirements
- Protecting Intellectual Property (IP)
- Identity & access management
- Awareness
- Safety
- Cloud
- Compliance Requirements
- Functionality vs. Information Security

KB4499175 Status CVE





NATIONAL CYBER SUMMIT

June 4-6, 2019 | Huntsville, AL

Faster than the Speed of Threat:
Edge-to-Edge Cybersecurity

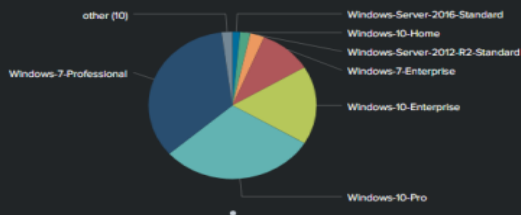
Windows OS Count

Inventory of all Windows Operating Systems discovered.

Edit

Export ▾

...



Operating_System ↕	count ↕	3m ago
Windows-Embedded-Standard	1	0.032468
Windows-Server-2008-Enterprise	1	0.032468
Windows-10-Pro-for-Workstations	2	0.064935
Windows-XP-Professional	2	0.064935
Windows-10-Enterprise-2015-LTSC	3	0.097403
Windows-7-Ultimate	8	0.259740
Windows-Server-2019-Standard	8	0.259740
Windows-Server-2008-Standard	10	0.324675
Windows-Server-2008-R2-Enterprise	12	0.389610
Windows-Server-2008-R2-Standard	17	0.551948
Windows-Server-2016-Standard	45	1.461039
Windows-10-Home	61	1.980519
Windows-Server-2012-R2-Standard	84	2.727273
Windows-7-Enterprise	315	10.227273
Windows-10-Enterprise	530	17.207792
Windows-10-Pro	923	29.967532
Windows-7-Professional	1058	34.350649