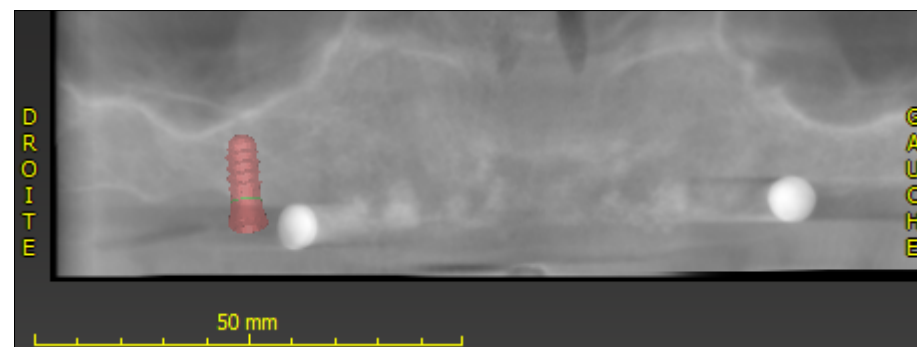
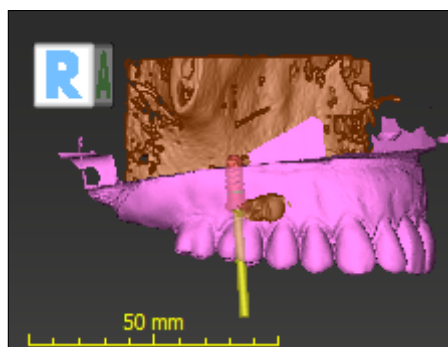
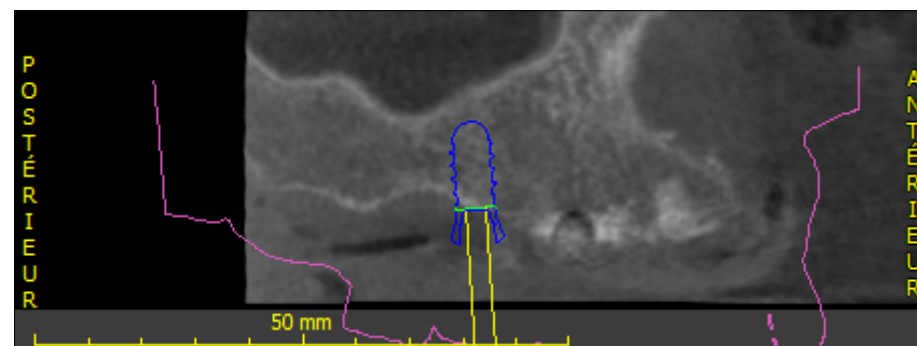
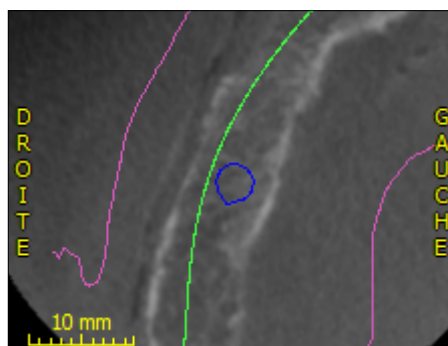
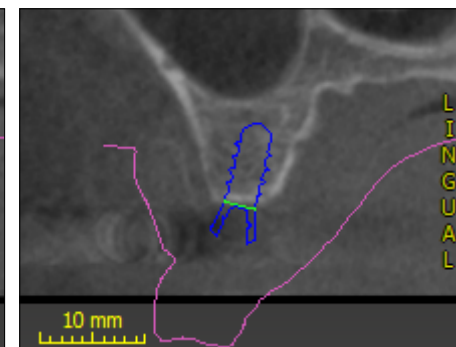
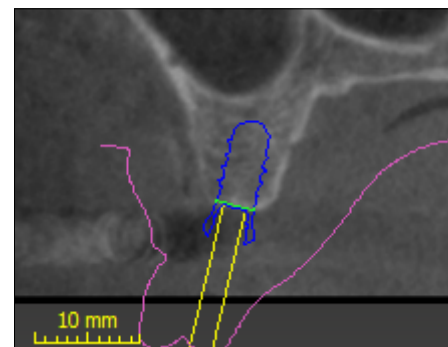
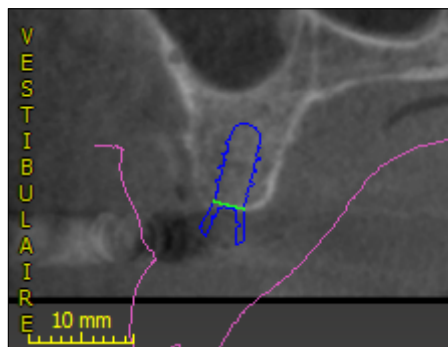


Détails implants

Système de la FDI (Fédération Dentaire Internationale)

Plan: anonyme g max
Position: 16

Implant
Straumann
SLA Standard (Regular Neck)
Référence: 043.031S
Longueur: 8.0 mm
Diamètre 1: 4.1 mm
Diamètre 2: 3.5 mm



Détails implants

Système de la FDI (Fédération Dentaire Internationale)

Plan: anonyme g max
Position: 14

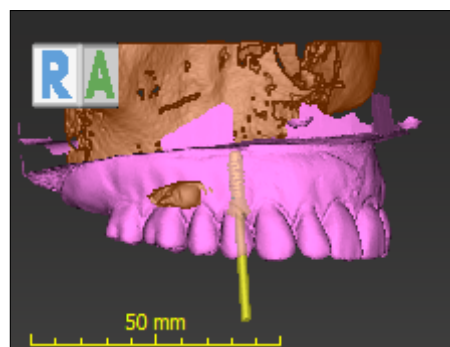
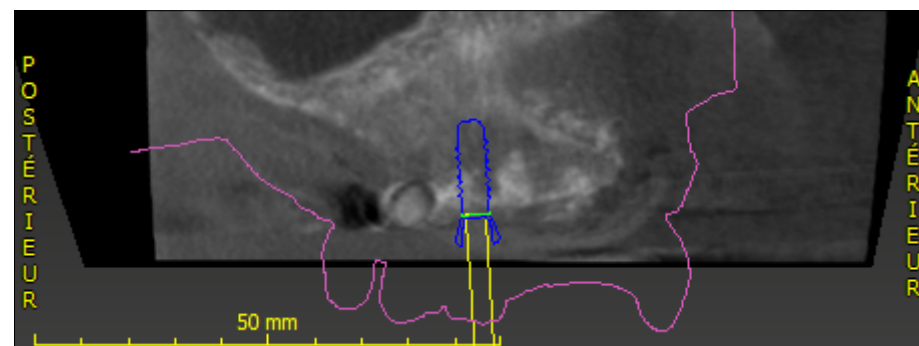
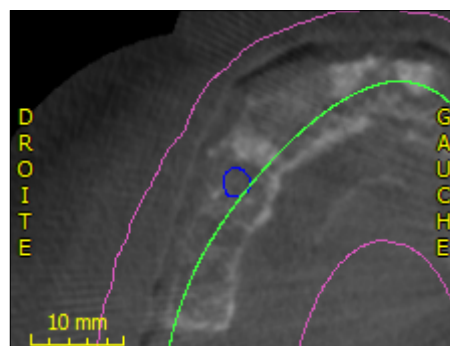
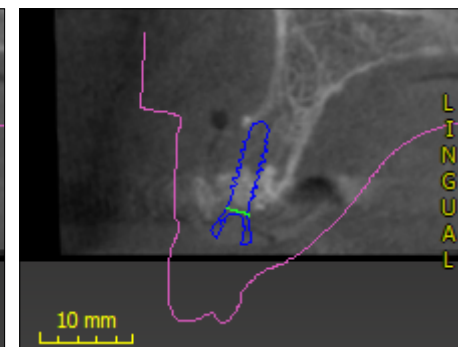
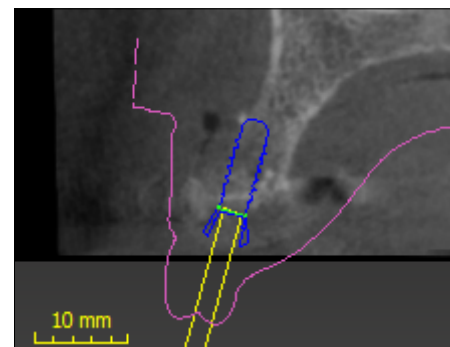
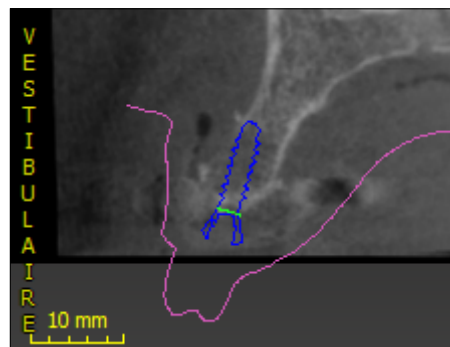
Implant
Straumann
SLA Standard (Regular Neck)

Référence: 043.132S

Longueur: 10.0 mm

Diamètre 1: 3.3 mm

Diamètre 2: 2.8 mm

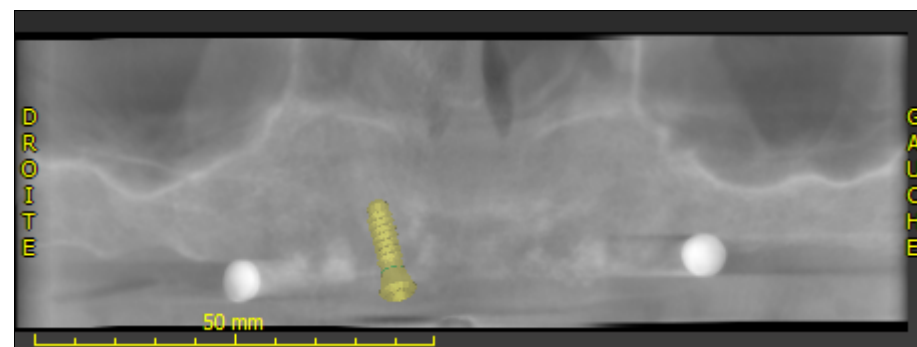
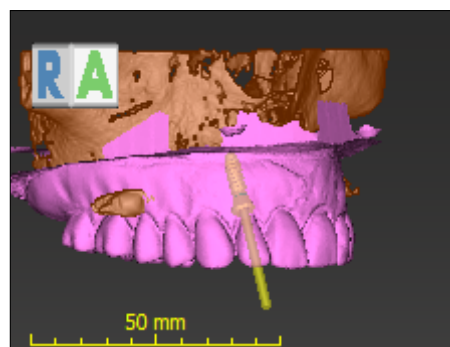
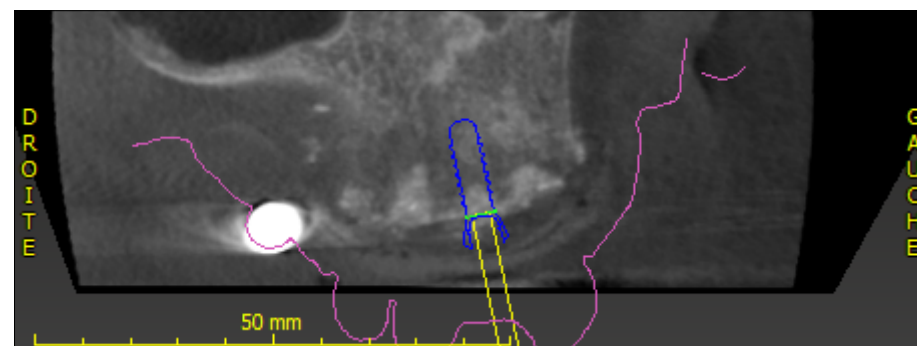
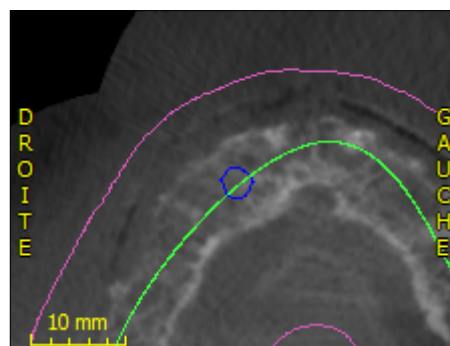
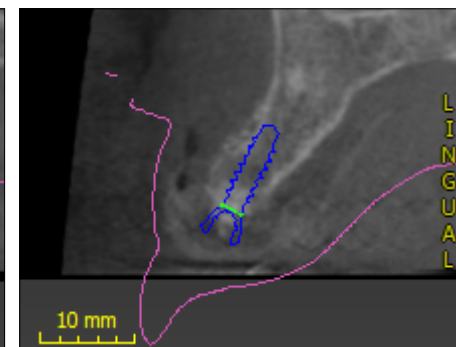
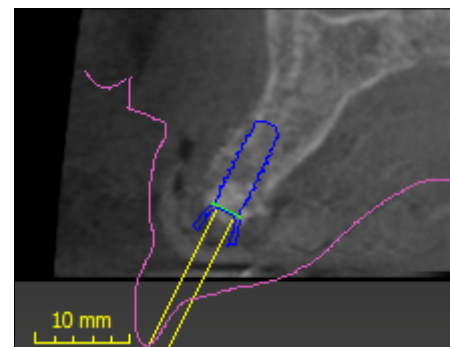
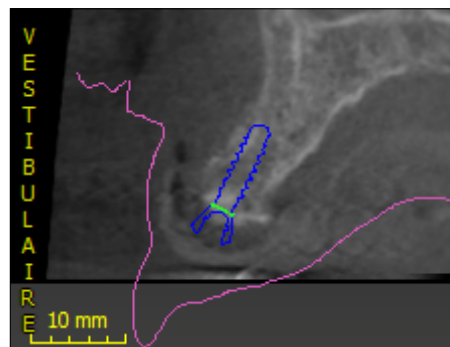


Détails implants

Système de la FDI (Fédération Dentaire Internationale)

Plan: anonyme g max
Position: 12

Implant
Straumann
SLA Standard (Regular Neck)
Référence: 043.132S
Longueur: 10.0 mm
Diamètre 1: 3.3 mm
Diamètre 2: 2.8 mm



Détails implants

Système de la FDI (Fédération Dentaire Internationale)

Plan: anonyme g max
Position: 22

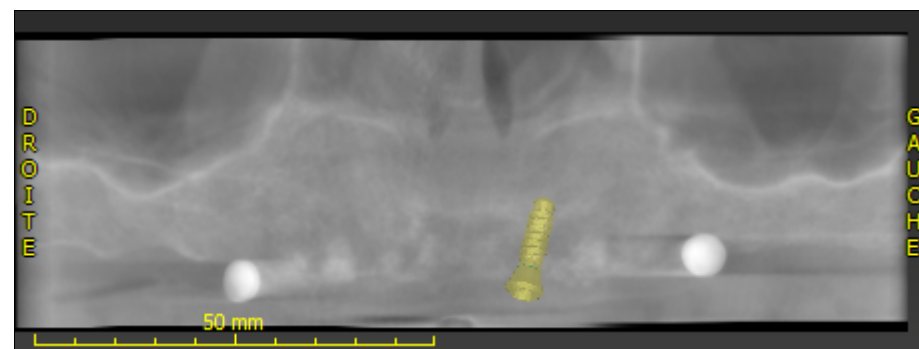
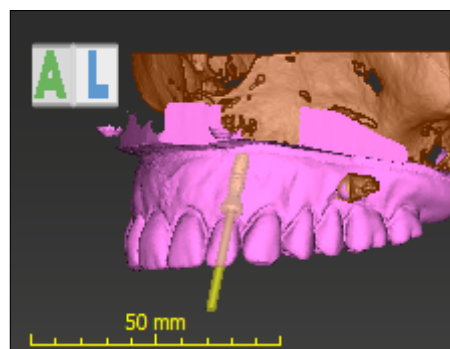
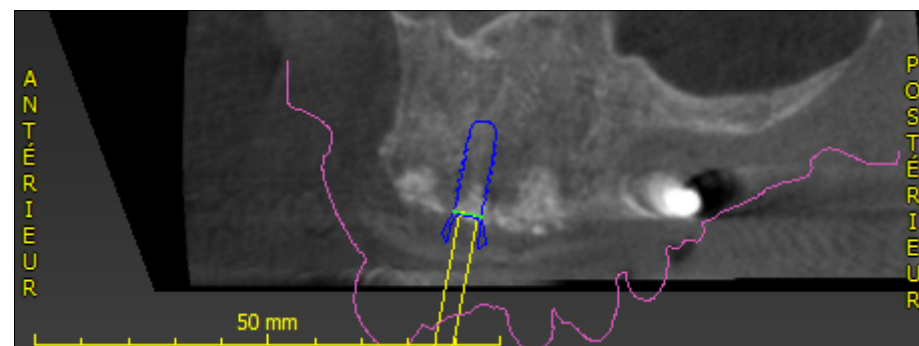
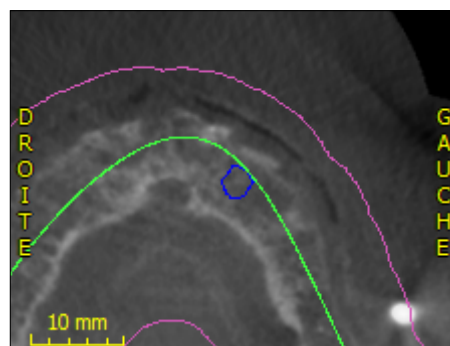
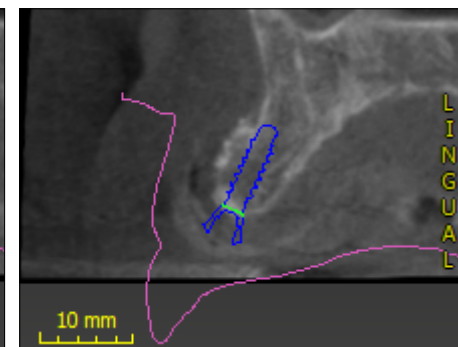
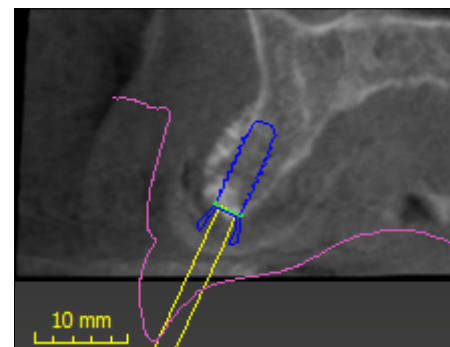
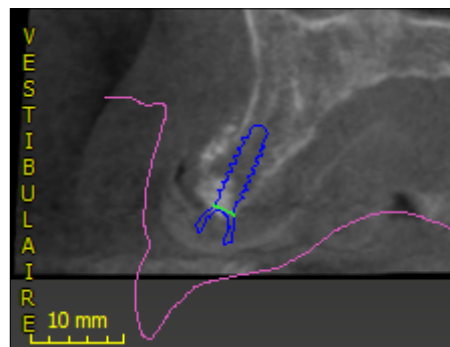
Implant
Straumann
SLA Standard (Regular Neck)

Référence: 043.132S

Longueur: 10.0 mm

Diamètre 1: 3.3 mm

Diamètre 2: 2.8 mm



Détails implants

Système de la FDI (Fédération Dentaire Internationale)

Plan: anonyme g max
Position: 24

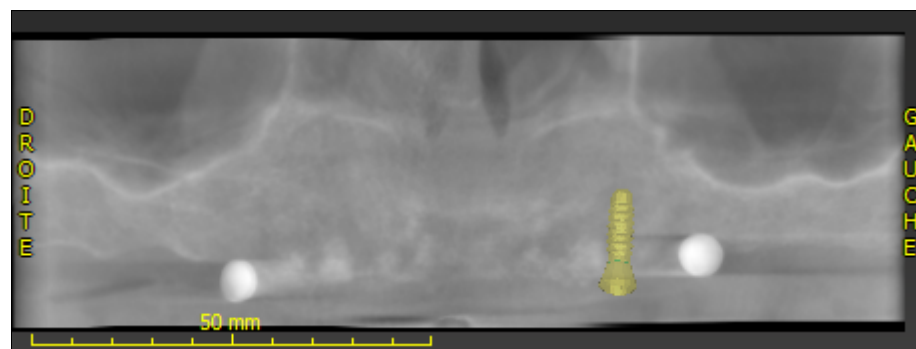
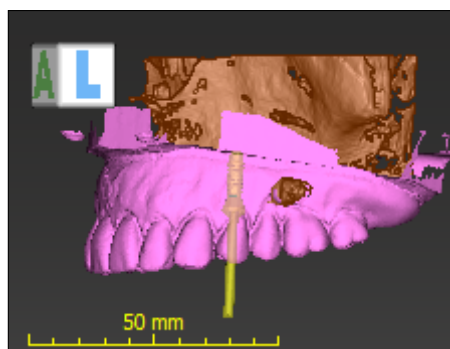
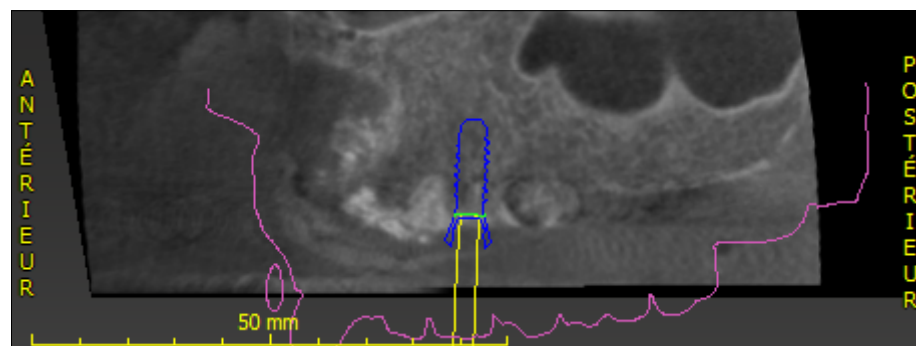
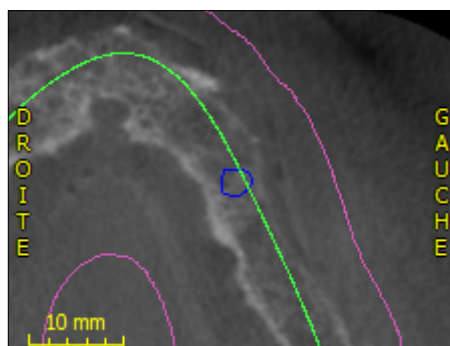
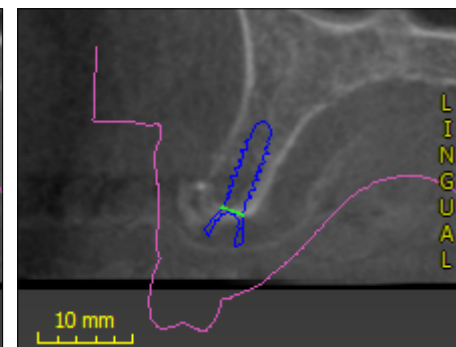
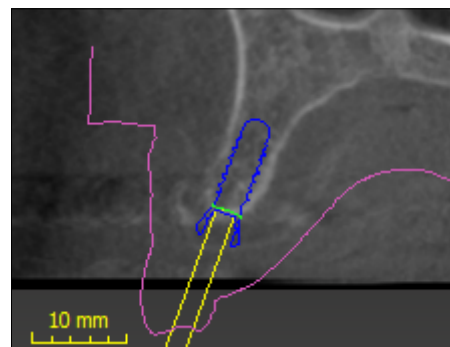
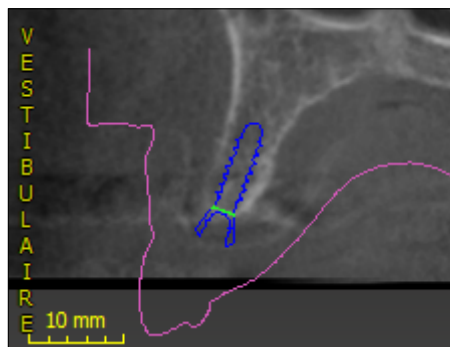
Implant
Straumann
SLA Standard (Regular Neck)

Référence: 043.132S

Longueur: 10.0 mm

Diamètre 1: 3.3 mm

Diamètre 2: 2.8 mm

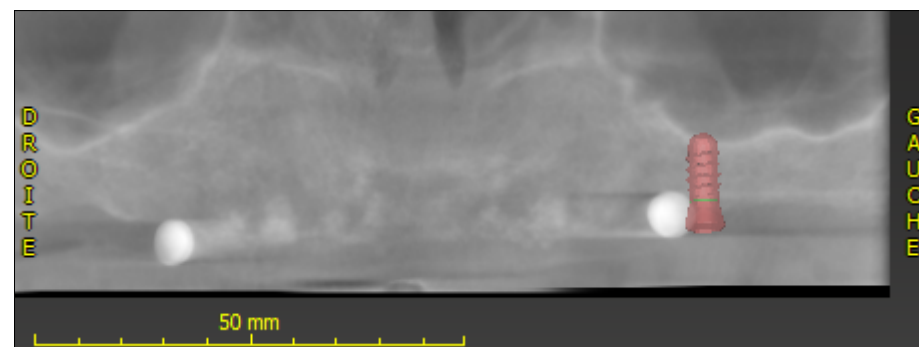
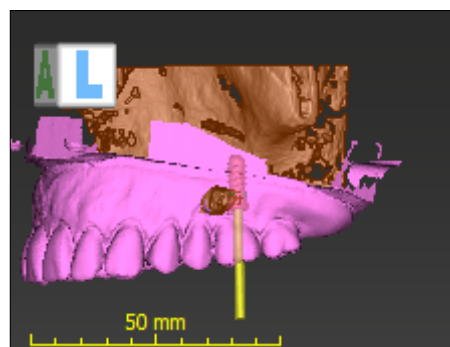
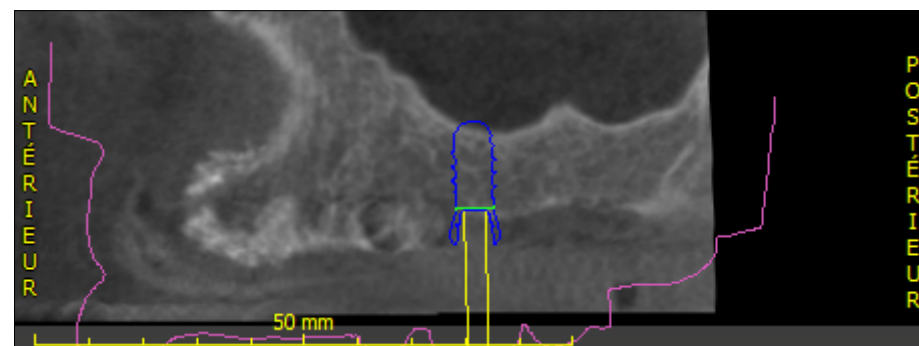
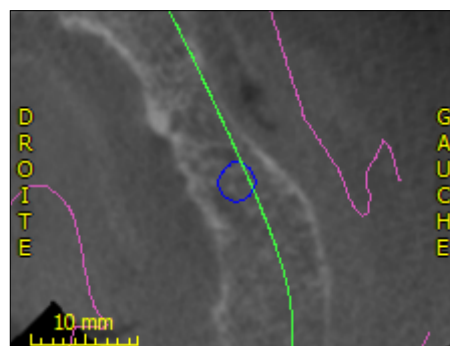
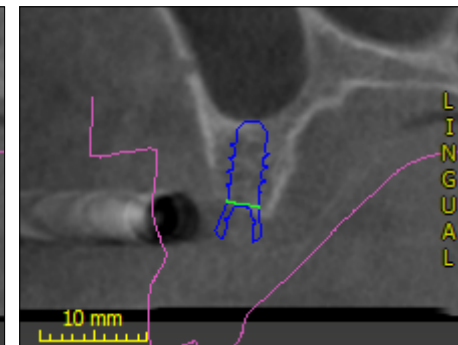
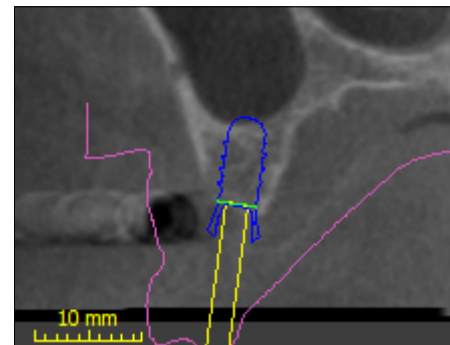
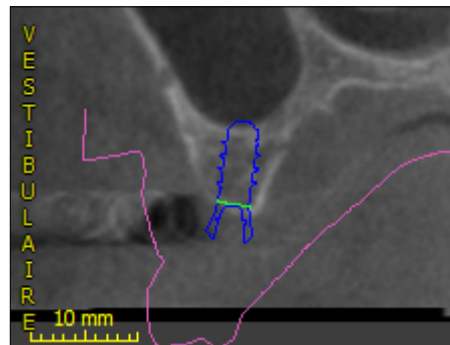


Détails implants

Système de la FDI (Fédération Dentaire Internationale)

Plan: anonyme g max
Position: 26

Implant
Straumann
SLA Standard (Regular Neck)
Référence: 043.031S
Longueur: 8.0 mm
Diamètre 1: 4.1 mm
Diamètre 2: 3.5 mm



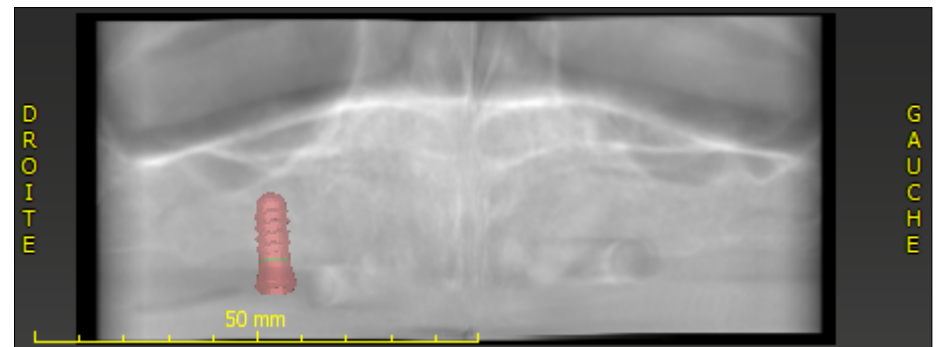
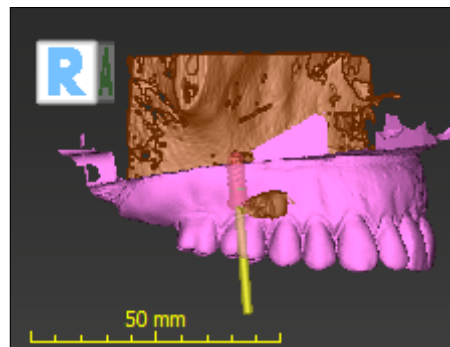
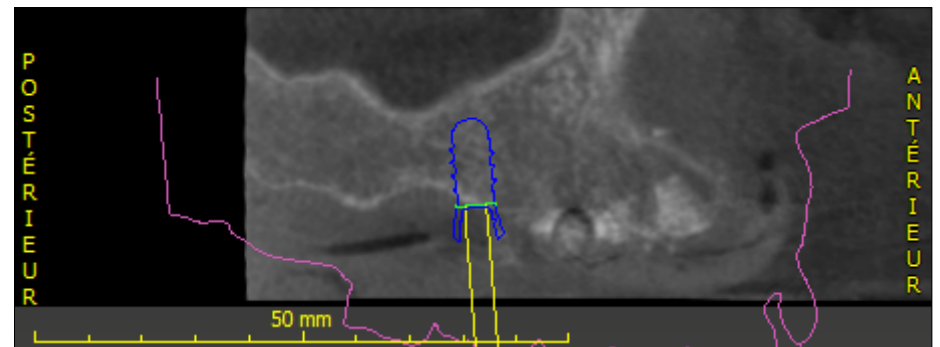
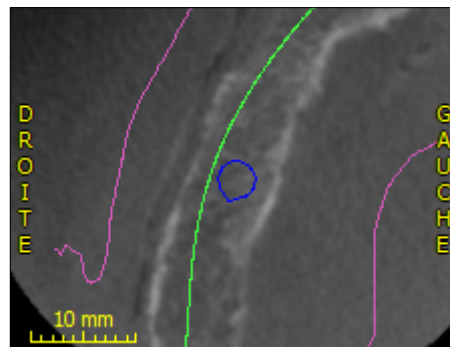
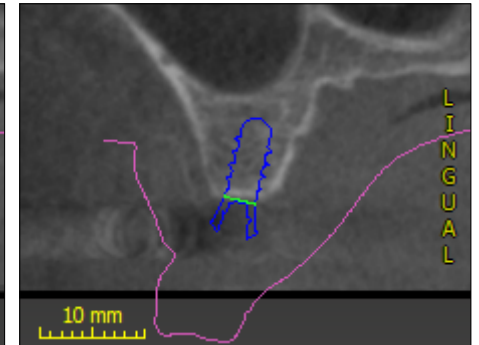
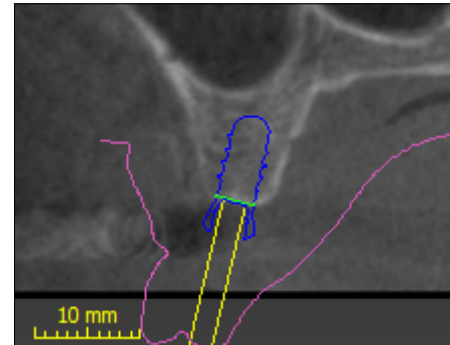
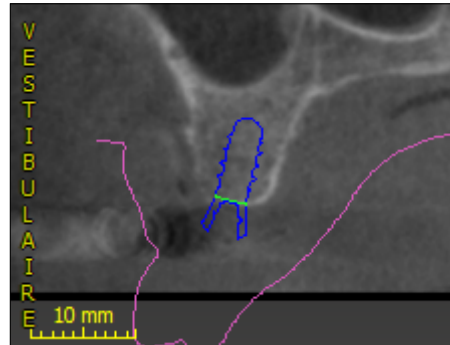
Détails implants

Système de la FDI (Fédération Dentaire Internationale)

Plan: Maxillaire
Position: 16

Implant
Straumann
SLA Standard (Regular Neck)

Référence: 043.031S
Longueur: 8.0 mm
Diamètre 1: 4.1 mm
Diamètre 2: 3.5 mm



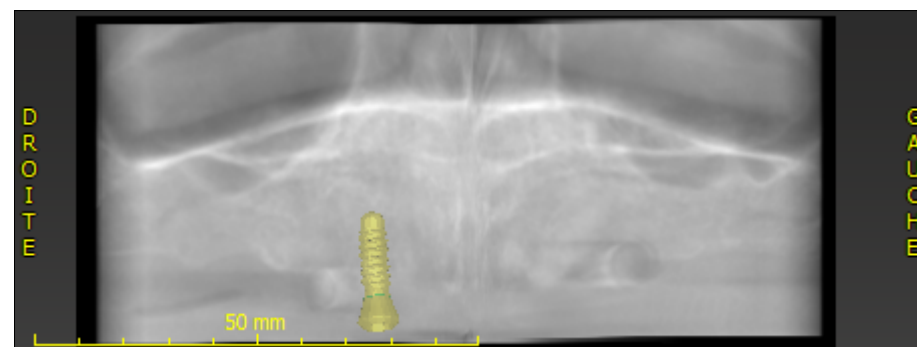
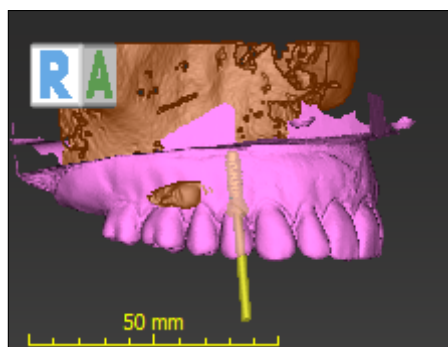
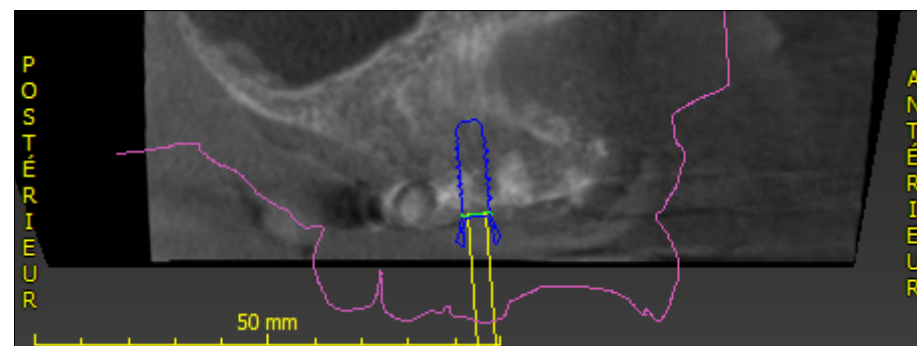
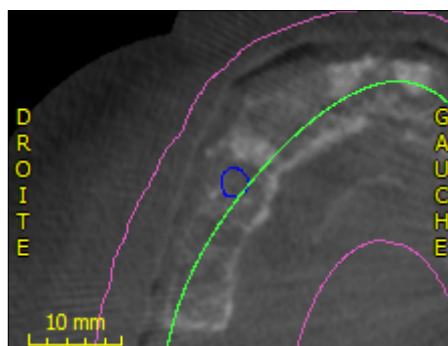
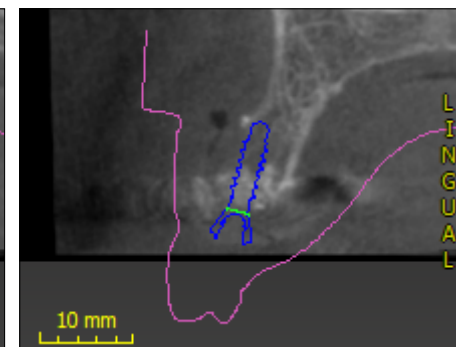
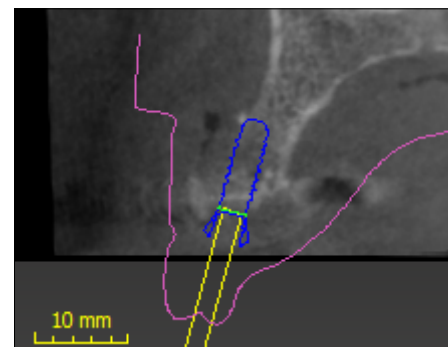
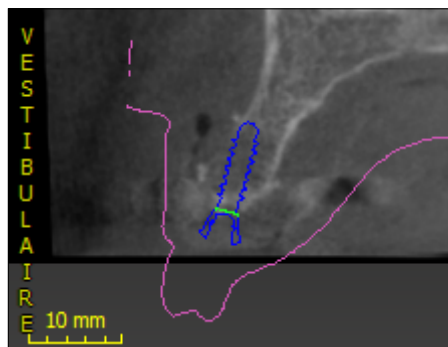
Détails implants

Système de la FDI (Fédération Dentaire Internationale)

Plan: Maxillaire
Position: 14

Implant
Straumann
SLA Standard (Regular Neck)

Référence: 043.132S
Longueur: 10.0 mm
Diamètre 1: 3.3 mm
Diamètre 2: 2.8 mm



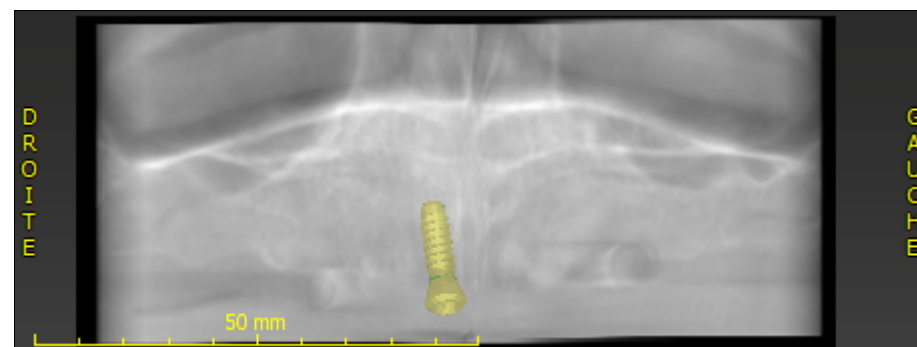
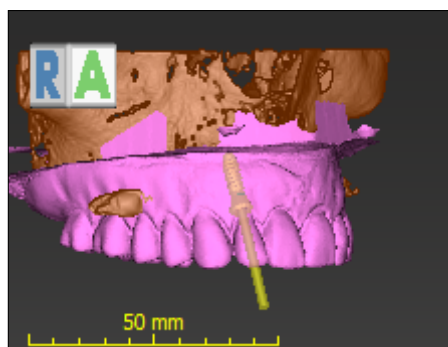
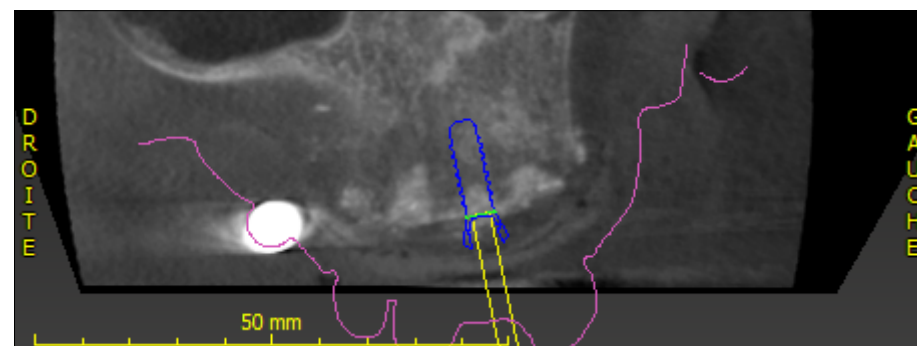
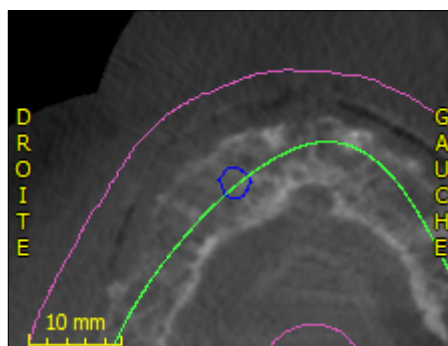
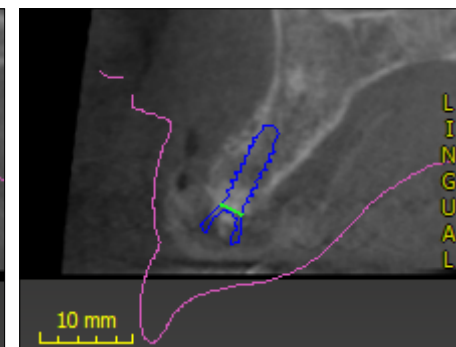
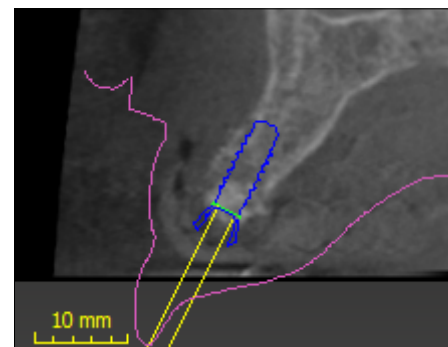
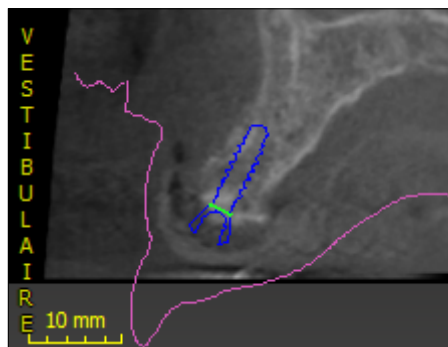
Détails implants

Système de la FDI (Fédération Dentaire Internationale)

Plan: Maxillaire
Position: 12

Implant
Straumann
SLA Standard (Regular Neck)

Référence: 043.132S
Longueur: 10.0 mm
Diamètre 1: 3.3 mm
Diamètre 2: 2.8 mm



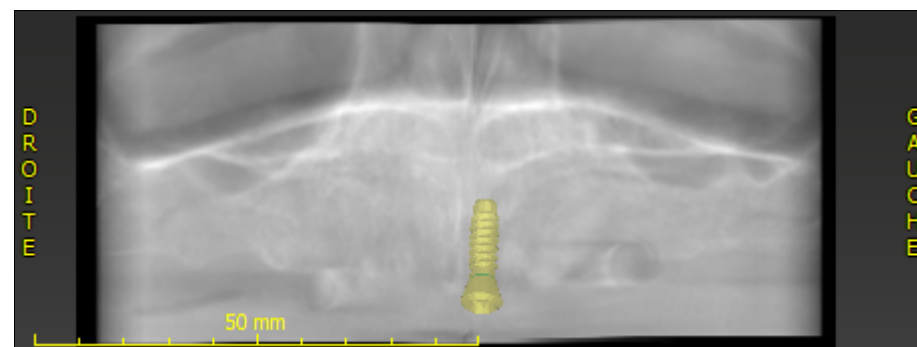
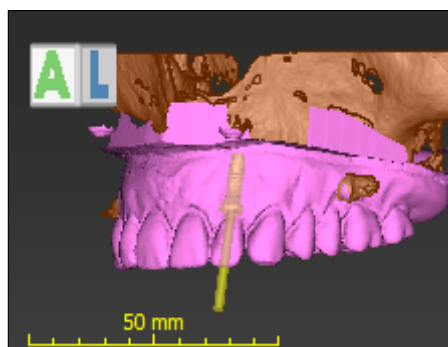
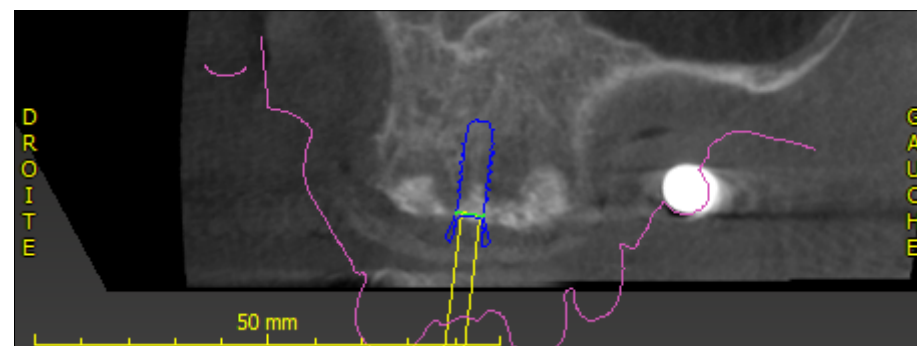
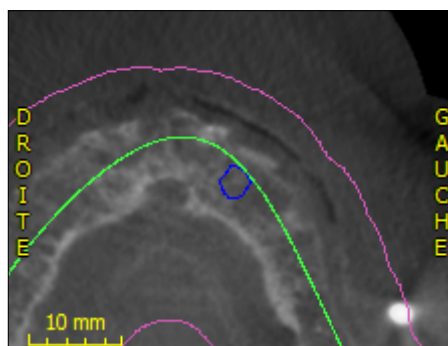
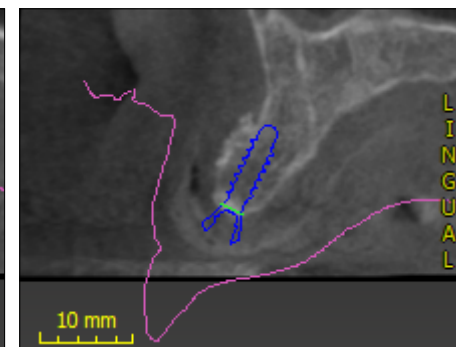
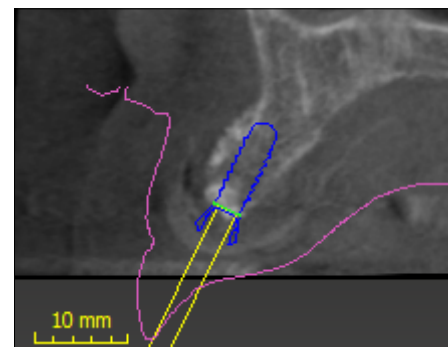
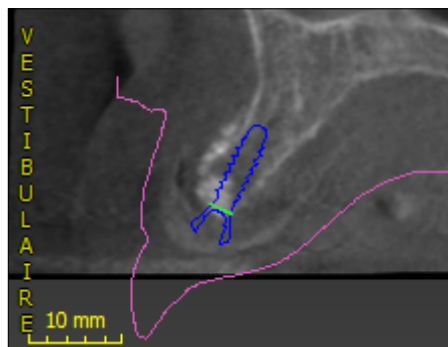
Détails implants

Système de la FDI (Fédération Dentaire Internationale)

Plan: Maxillaire
Position: 22

Implant
Straumann
SLA Standard (Regular Neck)

Référence: 043.132S
Longueur: 10.0 mm
Diamètre 1: 3.3 mm
Diamètre 2: 2.8 mm



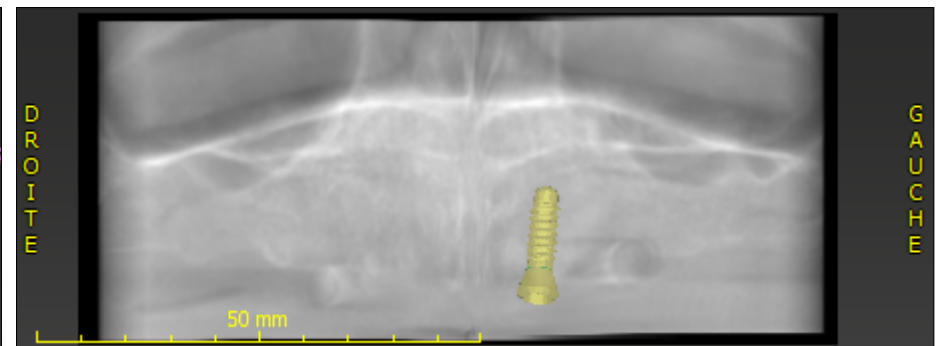
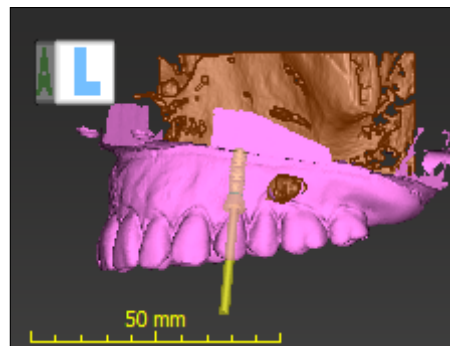
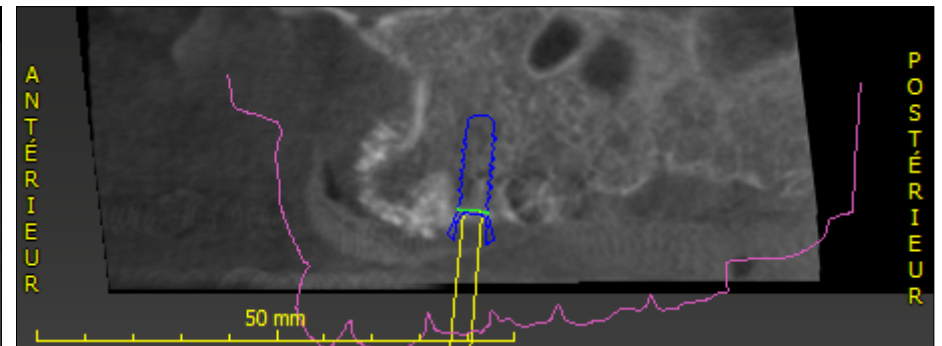
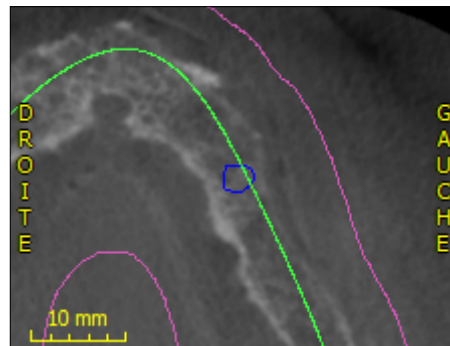
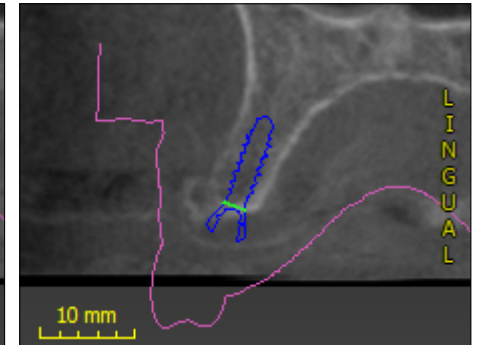
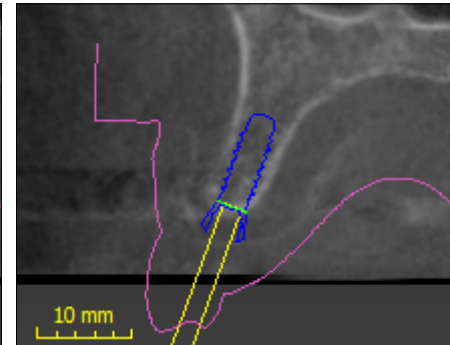
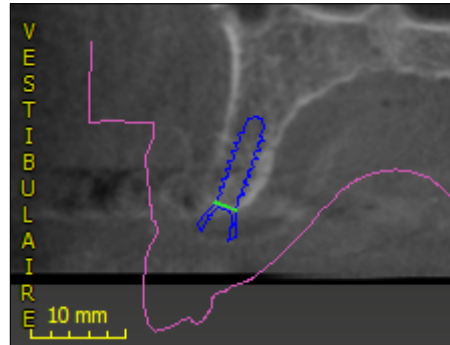
Détails implants

Système de la FDI (Fédération Dentaire Internationale)

Plan: Maxillaire
Position: 24

Implant
Straumann
SLA Standard (Regular Neck)

Référence: 043.132S
Longueur: 10.0 mm
Diamètre 1: 3.3 mm
Diamètre 2: 2.8 mm



Détails implants

Système de la FDI (Fédération Dentaire Internationale)

Plan: Maxillaire
Position: 26

Implant
Straumann
SLA Standard (Regular Neck)
Référence: 043.031S
Longueur: 8.0 mm
Diamètre 1: 4.1 mm
Diamètre 2: 3.5 mm

